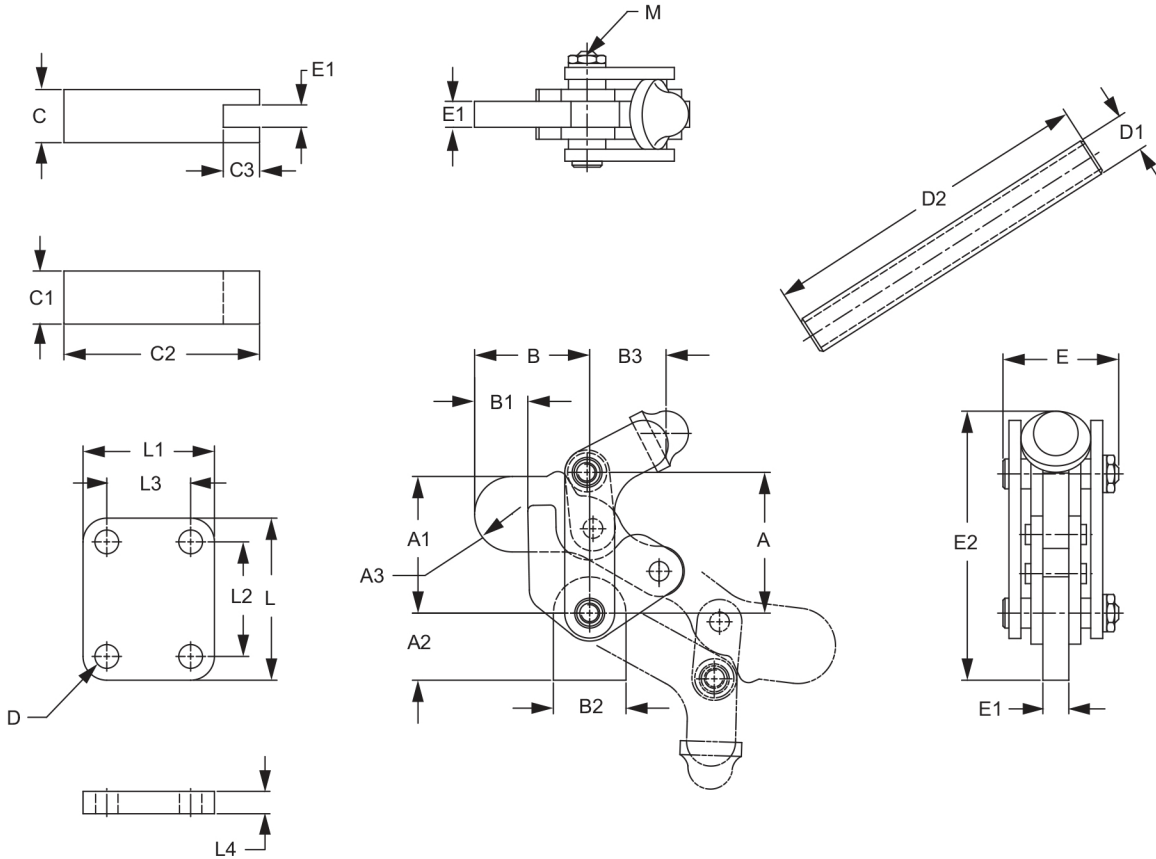
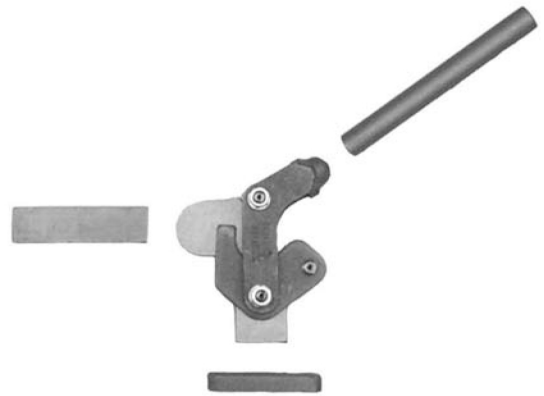


# VARI CLAMPS

This clamp is designed for heavy duty work on an automotive production line. It is furnished complete with a base, arm and handle pipe which can be welded to suit the applications needs. This clamp is made of SS41.

- Holding capacity: 441 lbs. Max. on AVARI NO1  
1000 lbs. Max. on AVARI NO2  
2200 lbs. Max. on AVARI NO3
- Handle movement: 116° on AVARI NO1  
120° on AVARI NO2  
120° on AVARI NO3
- Bar movement: 187° on AVARI NO1  
190° on AVARI NO2  
190° on AVARI NO3

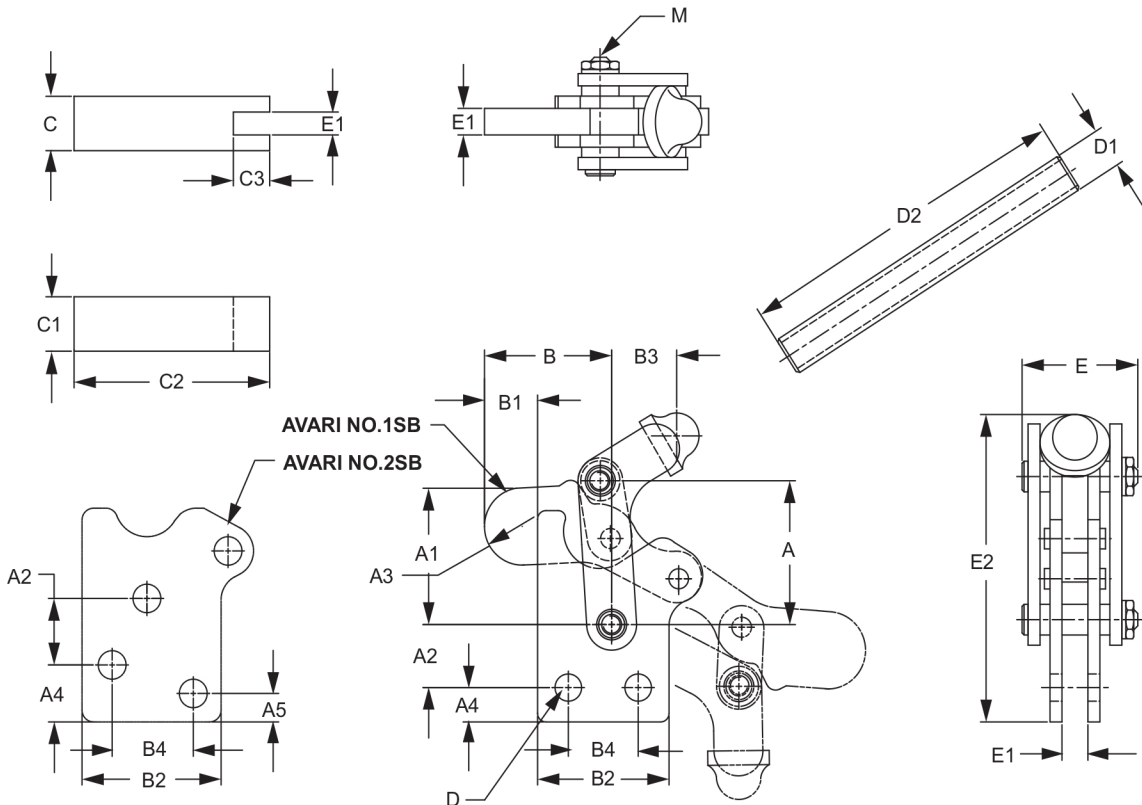


**SERIES AVARI NO1, AVARI NO2, AVARI NO3**

P/N	TYPE	A	A1	A2	A3	B	B1	B2	B3	C	C1	C2	C3	D	D1	D2	E	E1	E2	L	L1	L2	L3	L4	M
AVARI NO1	S, FB	1.97	1.93	.94	.53	1.62	.75	1.02	1.07	.75	.75	2.76	.51	.33	.54	4.72	1.54	.31	3.79	2.28	1.85	1.61	1.18	.31	M6x1.00
AVARI NO2	S, FB	2.76	2.99	1.26	.89	1.99	.93	1.38	1.28	.98	.98	3.94	.91	.45	.87	5.39	2.28	.51	5.31	3.15	2.36	2.36	1.57	.45	M8x1.25
AVARI NO3	S, FB	3.62	4.25	1.42	1.06	2.24	.94	2.09	1.48	1.10	1.10	4.92	1.10	.53	.87	5.91	2.76	.63	6.47	3.94	3.23	2.95	2.17	.47	M10x1.50

This clamp is similar to series AVARI NO1 but has a straight base. It is furnished complete with a base, arm and handle pipe which can be welded to suit the applications needs. This clamp is made of SS41.

- Holding capacity: 441 lbs. Max. on AVARI NO1SB  
1100 lbs. Max. on AVARI NO2SB
- Handle movement: 116° on AVARI NO1SB  
120° on AVARI NO2SB
- Bar movement: 187° on AVARI NO1SB  
190° on AVARI NO2SB

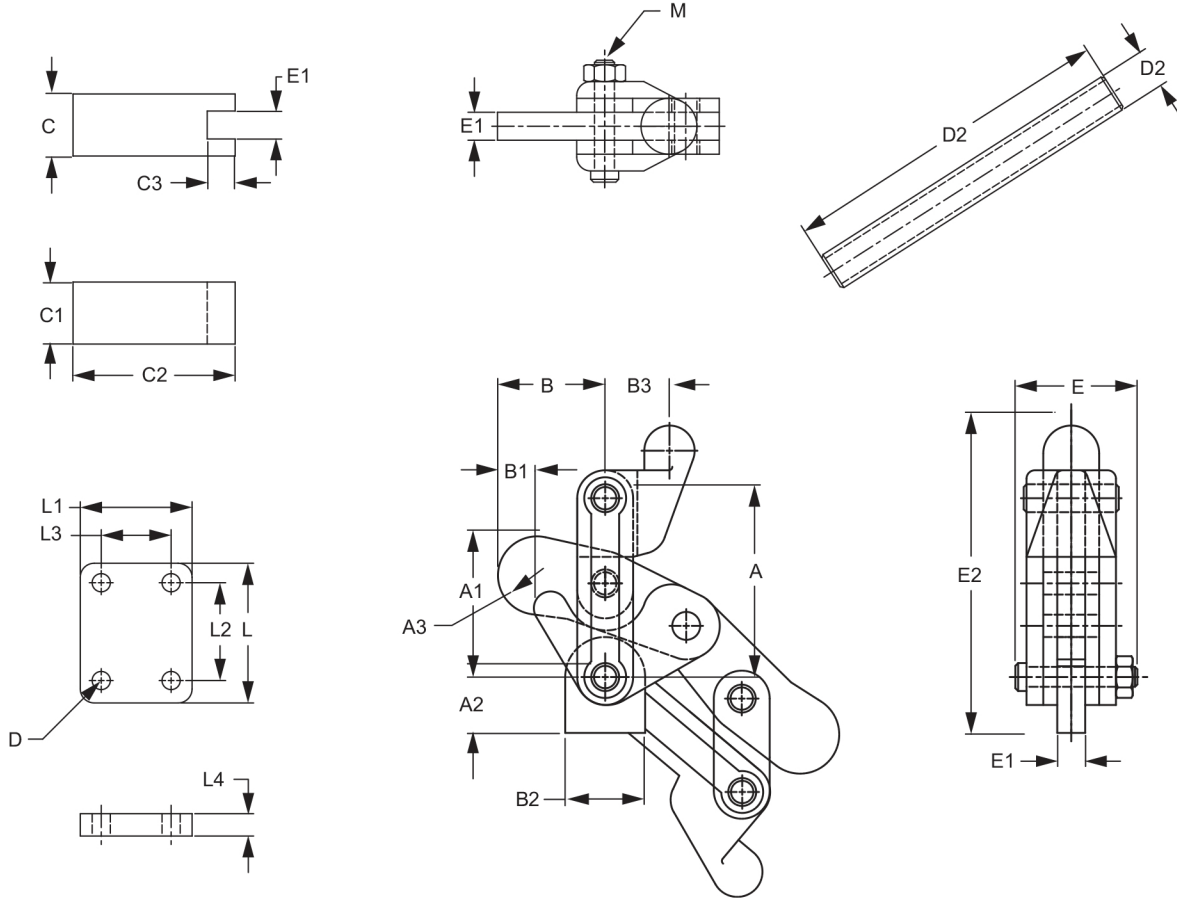
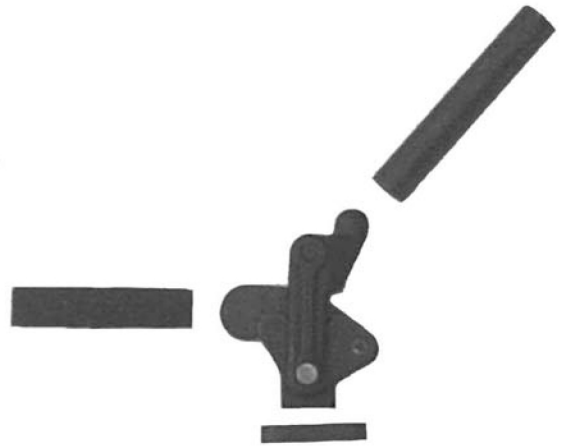


SERIES AVARI NO1SB, AVARI NO2SB																							
P/N	TYPE	A	A1	A2	A3	A4	A5	B	B1	B2	B3	B4	C	C1	C2	C3	D	D1	D2	E	E1	E2	M
AVARI NO12B	S, SB	1.97	1.88	.87	.53	.47	-	1.79	.75	1.85	.92	.98	.75	.75	2.76	.51	.37	.54	4.72	1.54	.31	4.25	M6x1.00
AVARI NO2SB	S, SB	2.76	2.99	1.10	.89	.94	.47	1.99	.89	2.36	1.28	1.38	.98	.98	3.94	.91	.47	.87	5.39	2.28	.51	6.10	M8x1.25

# VARI CLAMPS

This clamp is a larger version of series AVARI NO1. It is designed for extra heavy duty work on an automotive production line. It is furnished complete with a base, arm and handle pipe which can be welded to suit the applications needs. This clamp is made of SS41.

- Holding capacity: 750 lbs. Maxi. on AVARI NO1X  
2600 lbs. Maxi. on AVARI NO2X  
3000 lbs. Maxi. on AVARI NO3X
- Handle movement: 130° on AVARI NO1X  
130° on AVARI NO2X  
130° on AVARI NO3X
- Bar movement: 250° on AVARI NO1X  
250° on AVARI NO2X  
250° on AVARI NO3X

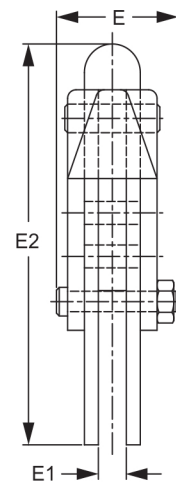
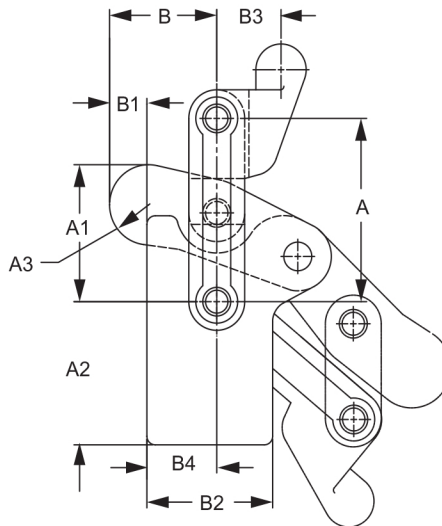
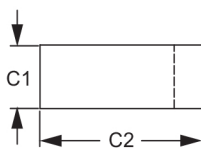
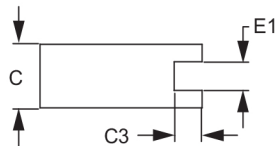
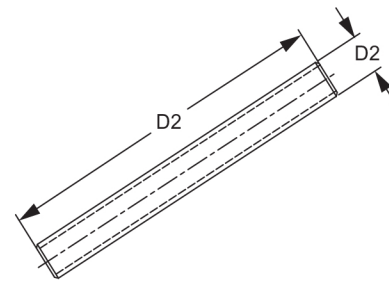
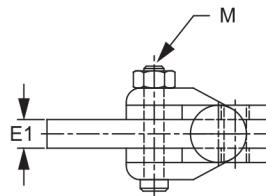


**SERIES AVARI NO1X, AVARI NO2X, AVARI NO3X**

P/N	TYPE	A	A1	A2	A3	B	B1	B2	B3	C	C1	C2	C3	D	D1	D2	E	E1	E2	L	L1	L2	L3	L4	M
AVARI NO1X	S, FB	1.57	1.29	.39	.39	1.21	.54	.71	.55	.63	.63	1.97	.39	.22	.50	1.97	1.11	.24	2.58	1.38	1.10	.98	.71	.24	M5x.80
AVARI NO2X	S, FB	2.52	1.98	.79	.55	1.51	.50	1.13	.91	.87	.87	2.28	.39	.26	.54	4.72	1.85	.39	4.33	1.97	1.57	1.38	.98	.31	5/16-18
AVARI NO3X	S, FB	3.25	2.87	1.10	.71	2.24	1.04	1.50	1.04	.98	.98	2.83	.59	.33	.87	5.39	2.39	.48	5.41	2.36	1.97	1.57	1.18	.31	3/8-16

This clamp is similar to series AVARI NO1X but has a straight base. It is furnished complete with a base, arm and handle pipe which can be welded to suit the applications needs. This clamp is made of SS 41.

- Holding capacity: 700 lbs. Maxi. on AVARI NO1-B  
2600 lbs. Maxi. on AVARI NO2-B  
3000 lbs. Maxi. on AVARI NO3-B
- Handle movement: 130° on AVARI NO1-B  
130° on AVARI NO2-B  
130° on AVARI NO3-B
- Bar movement: 205° on AVARI NO1-B  
205° on AVARI NO2-B  
205° on AVARI NO3-B



### SERIES AVARI NO1-B, AVARI NO2-B, AVARI NO3-B

P/N	TYPE	A	A1	A2	A3	B	B1	B2	B3	B4	C	C1	C2	C3	D1	D1	E	E1	E2	M
AVARI NO1-B	S, SB	1.57	1.18	1.18	.39	1.21	.57	1.06	1.23	.59	.63	.63	1.97	.39	.50	1.97	1.11	.24	3.37	M5x.80
AVARI NO2-B	S, SB	2.52	1.88	1.97	.55	1.51	.53	1.77	1.77	.98	.87	.87	2.28	.39	.54	4.72	1.85	.39	5.51	5/16-18
AVARI NO3-B	S, SB	3.25	2.87	2.48	.71	2.24	1.26	1.97	1.77	.98	.98	.98	2.83	.59	.87	5.39	2.39	.48	6.79	3/8-16