

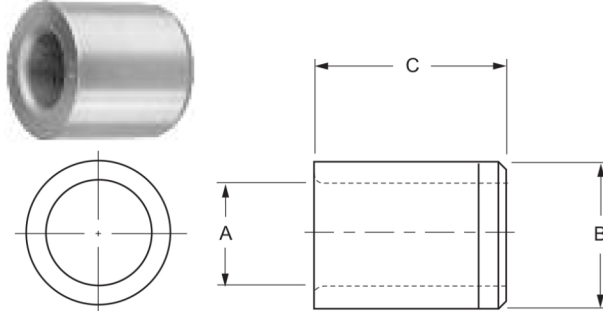
PRESS FIT - TYPE P

When ordering specify:

Example:

Quantity	Bushing Type	I.D.(A)	O.D.(B)	Length(C)
6	P	5/16	5/8	3/4

Or: 6 P-40-12-5/16



A I.D. RANGE Drill Size Decimal Range	B O.D. TOLERANCE Nominal		C	ANSI SYMBOL ‡	PRICE CODE
	GROUND	UNGROUND DIGITAL RANGE			
#80 - #70 (.0135 - .0280) .35 - .70mm	.1578 .1575	5/32 .171 .169	1/4	P-10-4	203
			5/16	P-10-5	209
			3/8	P-10-6	211
			*1/2	P-10-8	214
			*3/4	P-10-12	219
#69 - 3/64 (.0292 - .0469) .75 - 1.25mm	.1578 .1575	5/32 .171 .169	1/4	P-10-4	190
			5/16	P-10-5	193
			3/8	P-10-6	195
			*1/2	P-10-8	199
			*3/4	P-10-12	209
#55 - 1/16 (.0520 - .0625) 1.30 - 1.60mm	.1578 .1575	5/32 .171 .169	1/4	P-10-4	166
			5/16	P-10-5	170
			3/8	P-10-6	173
			1/2	P-10-8	174
			*3/4	P-10-12	182
#55 - 1/16 (.0520 - .0625) 1.30 - 1.60mm	.1891 .1888	3/16 .203 .198	1/4	P-12-4	166
			5/16	P-12-5	170
			3/8	P-12-6	173
			1/2	P-12-8	174
			*5/8	P-12-10	179
#52 - #39 (.0635 - .0995) 1.65 - 2.50mm	.1891 .1888	3/16 .203 .198	1/4	P-12-4	119
			5/16	P-12-5	125
			3/8	P-12-6	127
			1/2	P-12-8	130
			5/8	P-12-10	132
#80 - #70 (.0135 - .0280) .35 - .70mm	.2046 .2043	13/64 .219 .216	1/4	P-13-4	190
			5/16	P-13-5	193
			3/8	P-13-6	195
			*1/2	P-13-8	199
			*3/4	P-13-12	209
#69 - 3/64 (.0292 - .0469) 75 - 1.25mm	.2046 .2043	13/64 .219 .216	1/4	P-13-4	190
			5/16	P-13-5	193
			3/8	P-13-6	195
			*1/2	P-13-8	199
			*3/4	P-13-12	209

* Counterbored leaving correct drill bearing length and chip clearance.
‡ All bushings are finish ground unless the letter "U" appears with the bushing type or the ANSI symbol.

A I.D. RANGE Drill Size Decimal Range	B O.D. TOLERANCE Nominal		C	ANSI SYMBOL ‡	PRICE CODE
	GROUND	UNGROUND DIGITAL RANGE			
#55 - 1/16 (.0520 - .0625) 1.30 - 1.60mm	.2046 .2043	13/64 .219 .198	1/4	P-13-4	166
			5/16	P-13-5	170
			3/8	P-13-6	173
			1/2	P-13-8	174
			*3/4	P-13-12	182
#52 - #39 (.0635 - .0995) 1.65 - 2.50mm	.2046 .2043	13/64 .219 .198	1/4	P-13-4	119
			5/16	P-13-5	125
			3/8	P-13-6	128
			1/2	P-13-8	130
			*3/4	P-13-12	135
#40 - 9/64 (.0980 - .1406) 2.50 - 3.50mm	.2516 .2513	1/4 .265 .260	1/4	P-16-4	115
			5/16	P-16-5	118
			3/8	P-16-6	122
			1/2	P-16-8	125
			5/8	P-16-10	128
1/8 - #10 (.1250 - .1935) 3.20 - 4.90mm	.3141 .3138	5/16 .327 .322	*3/4	P-16-12	131
			*1	P-16-16	136
			*1-3/8	P-16-22	169
			*1-1/2	P-16-24	174
			*1-3/4	P-16-28	179
#10 - #1 (.1935 - .2280) includes 1/4 4.90 - 5.80mm	.3766 .3763	3/8 .390 .385	1/4	P-20-4	110
			5/16	P-20-5	112
			3/8	P-20-6	113
			1/2	P-20-8	114
			5/8	P-20-10	115
3/16 - F (.1875 - .2570) includes .2510 4.75-6.50mm	.4078 .4075	13/32 .421 .416	3/4	P-20-12	117
			*1	P-20-16	119
			*1-3/8	P-20-22	140
			*1-1/2	P-20-24	150
			*1-3/4	P-20-28	159
A - L (.2340 - .2900) includes .2510 5.90 - 7.40mm	.4392 .4389	7/16 .453 .448	1/4	P-24-4	105
			5/16	P-24-5	106
			3/8	P-24-6	109
			1/2	P-24-8	110
			5/8	P-24-10	112
#10 - #1 (.1935 - .2280) includes 1/4 4.90 - 5.80mm	.3766 .3763	3/8 .390 .385	3/4	P-24-12	113
			*1	P-24-16	118
			1/4	P-26-4	105
			5/16	P-26-5	106
			3/8	P-26-6	109
3/16 - F (.1875 - .2570) includes .2510 4.75-6.50mm	.4078 .4075	13/32 .421 .416	1/2	P-26-8	110
			3/4	P-26-12	113
			*1	P-26-16	118
			*1-3/8	P-26-22	125
			*1-1/2	P-26-24	131
A - L (.2340 - .2900) includes .2510 5.90 - 7.40mm	.4392 .4389	7/16 .453 .448	*1-3/4	P-26-28	136
			1/4	P-28-4	105
			5/16	P-28-5	106
			3/8	P-28-6	109
			1/2	P-28-8	110
#10 - #1 (.1935 - .2280) includes 1/4 4.90 - 5.80mm	.3766 .3763	3/8 .390 .385	5/8	P-28-10	112
			3/4	P-28-12	113
			*1	P-28-16	118

PRESS FIT - TYPE P

A I.D. RANGE Drill Size Decimal Range	B O.D. TOLERANCE Nominal		C	ANSI SYMBOL ‡	PRICE CODE	A I.D. RANGE Drill Size Decimal Range	B O.D. TOLERANCE Nominal		C	ANSI SYMBOL ‡	PRICE CODE
	GROUND	UNGROUND					GROUND	UNGROUND			
	DIGITAL RANGE						DIGITAL RANGE				
3/16 - 0 (.1875 - .3160) includes .2510 3/8 4.75 - 8.00mm	.5017	.515	1/4	P-32-4	105	1/2 - 49/64 (.5000 - .7656) 12.50 - 19.50mm	1.0018	1.015	1/2	P-64-8	117
			5/16	P-32-5	106				5/8	P-64-10	117
			3/8	P-32-6	109				3/4	P-64-12	117
			1/2	P-32-8	110				1	P-64-16	120
			3/4	P-32-12	113				1-1/4	P-64-20	124
			*1	P-32-16	118				1-3/8	P-64-22	124
			*1-3/8	P-32-22	125				1-1/2	P-64-24	130
			*1-1/2	P-32-24	131				1-3/4	P-64-28	135
			*1-3/4	P-32-28	136				2-1/8	P-64-34	141
			*2-1/8	P-32-34	193				2-1/2	P-64-40	151
									3	P-64-48	199
M - 11/32 (.2950 - .3437) 7.50 - 8.75mm	.5642	.578	1/4	P-36-4	110	49/64 - 27/32 (.7656 - .8437) 19.50 - 21.50mm	1.1270	1.140	1/2	P-72-8	140
			5/16	P-36-5	105				5/8	P-72-10	136
			3/8	P-36-6	107				3/4	P-72-12	131
			1/2	P-36-8	107				1	P-72-16	140
			5/8	P-36-10	109				1-1/4	P-72-20	148
			3/4	P-36-12	110				1-1/2	P-72-24	152
			1	P-36-16	112				1-3/4	P-72-28	159
5/16 - 7/16 (.3125 - .4375) includes 1/2 7.90 - 11.00mm	.6267	.640	1/4	P-40-4	110	55/64 - 15/16 (.8595 - .9375) 22.00 - 24.00mm	1.2520	1.270	5/8	P-80-10	136
			5/16	P-40-5	105				3/4	P-80-12	131
			3/8	P-40-6	107				1	P-80-16	140
			1/2	P-40-8	107				1-1/4	P-80-20	148
			5/8	P-40-10	109				1-1/2	P-80-24	152
			3/4	P-40-12	110				1-3/4	P-80-28	159
			1	P-40-16	112				2	P-80-32	171
			1-1/4	P-40-20	124				1/2	P-88-8	141
			1-3/8	P-40-22	124				5/8	P-88-10	138
			1-1/2	P-40-24	126				3/4	P-88-12	131
			1-3/4	P-40-28	131				1	P-88-16	141
			2-1/8	P-40-34	141				1-1/4	P-88-20	149
									1-3/8	P-88-22	149
5/16 - 17/32 (.3125 - .5312) includes 5/8 7.90 - 13.50mm	.7518	.765	1/4	P-48-4	112	5/8 - 1-1/32 (.6250 - 1.0312) 16.00 - 26.00mm	1.3772	1.395	1-1/4	P-88-20	149
			5/16	P-48-5	106				1-3/8	P-88-22	149
			3/8	P-48-6	110				1-1/2	P-88-24	153
			1/2	P-48-8	110				1-3/4	P-88-28	161
			5/8	P-48-10	112				2	P-88-32	173
			3/4	P-48-12	112				2-1/8	P-88-34	174
			1	P-48-16	114				2-1/2	P-88-40	185
			1-1/4	P-48-20	125				3	P-88-48	222
			1-3/8	P-48-22	125				3/4	P-96-12	156
			1-1/2	P-48-24	128				1	P-96-16	149
			1-3/4	P-48-28	132				1-1/4	P-96-20	156
			2-1/8	P-48-34	142				1-1/2	P-96-24	163
			*2-1/2	P-48-40	193				1-3/4	P-96-28	166
									2	P-96-32	182
1/2 - 21/32 (.5000 - .6562) includes 3/4 12.50-16.50mm	.8768	.890	5/16	P-56-5	119	1-1/64 - 1-1/8 (1.0156 - 1.1250) 26.00 - 29.00mm	1.5022	1.524	3/4	P-96-12	156
			3/8	P-56-6	121				1	P-96-16	149
			1/2	P-56-8	115				1-1/4	P-96-20	156
			5/8	P-56-10	117				1-1/2	P-96-24	163
			3/4	P-56-12	117				1-3/4	P-96-28	166
			1	P-56-16	119				2	P-96-32	182
			1-1/4	P-56-20	124				2-1/4	P-96-36	188
			1-3/8	P-56-22	124				3/4	P-112-12	156
			1-1/2	P-56-24	128				1	P-112-16	149
			1-3/4	P-56-28	133				1-1/4	P-112-20	156
			2-1/8	P-56-34	141				1-1/2	P-112-24	163
			2-1/2	P-56-40	151				1-3/4	P-112-28	166
									2	P-112-32	182
									3	P-112-36	193
1/2 - 21/32 (.5000 - .6562) includes 3/4 12.50-16.50mm	.8765	.886	5/16	P-56-5	119	1 - 1-25/64 (1.0000 - 1.3906) 25.00 - 35.00mm	1.7523	1.770	1-1/4	P-112-24	163
			3/8	P-56-6	121				1-1/2	P-112-28	166
			1/2	P-56-8	115				1-3/4	P-112-32	182
			5/8	P-56-10	117				2	P-112-36	193
			3/4	P-56-12	117				3	P-112-40	204
			1	P-56-16	119				2-1/4	P-112-44	216
			1-1/4	P-56-20	124				3	P-112-48	228
			1-3/8	P-56-22	124				1	P-144-16	167
			1-1/2	P-56-24	128				1-1/4	P-144-20	178
			1-3/4	P-56-28	133				1-1/2	P-144-24	183
1/2 - 21/32 (.5000 - .6562) includes 3/4 12.50-16.50mm	.8765	.886	5/16	P-56-5	119	1-3/8 - 1-49/64 (1.3750 - 1.7656) 35.00 - 45.00mm	2.2525	2.270	1-1/4	P-144-28	187
			3/8	P-56-6	121				2	P-144-32	204
			1/2	P-56-8	115				2-1/4	P-144-36	216
			5/8	P-56-10	117				3	P-144-40	228
			3/4	P-56-12	117				1	P-144-16	167
			1	P-56-16	119				1-1/4	P-144-20	178

BUSHINGS

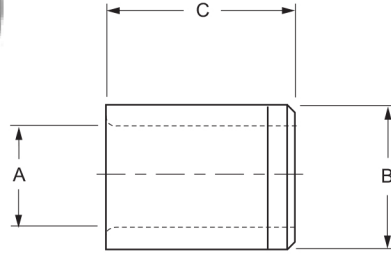
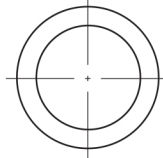
EXTENDED RANGE PRESS FIT - TYPE P

When ordering specify:

Example:

Quantity	Bushing Type	I.D.(A)	O.D.(B)	Length(C)
6	P	1-15/16	2-3/8	1- 3/4

Or: 6 P-152-28-1-15/16



TYPE PU (UNGROUND OD)					
BODY O.D.	ACTUAL DIMENSION				
	FROM	TO	BODY O.D.	FROM	TO
2-3/8	2.395	2.390	3-3/4	3.770	3.765
2-1/2	2.520	2.515	4	4.020	4.015
2-3/4	2.770	2.765	4-1/4	4.270	4.265
3	3.020	3.015	4-3/8	4.395	4.390
3-1/4	3.270	3.265	4-1/2	4.520	4.515
3-3/8	3.395	3.390	4-3/4	4.770	4.765
3-1/2	3.520	3.515	5	5.020	5.015

NOTE: All bushings are finish ground unless the letter "U" appears with the bushing type or ANSI symbol.
All extended range bushings are considered special orders and are non-returnable.

I.D. RANGE	.0003 to .0007	1.5000 to 2.0000	1.5000 to 2.1250	1.5000 to 2.3750	1.7500 to 2.5000	2.2500 to 2.7500	2.2500 to 2.8750	2.5000 to 3.0000	2.5000 to 3.1250	2.7500 to 3.3750	3.0000 to 3.6250	3.0000 to 3.7500	3.3750 to 3.8750	3.3750 to 4.1250	3.6250 to 4.2500
O.D. RANGE (B)	NOM.	2-3/8	2-1/2	2-3/4	3	3-1/4	3-3/8	3-1/2	3-3/4	4	4-1/4	4-3/8	4-1/2	4-3/4	5
LENGTH (C)	ANSI CODE	152	160	176	192	208	216	224	240	256	272	280	288	304	320
3/4	12	306	307	322	339	360	362	366	368	372	374	*	*	*	*
1	16	309	312	325	341	363	366	367	371	375	378	*	*	*	*
1-1/4	20	313	313	328	343	365	367	370	373	379	381	*	*	*	*
1-1/2	24	317	319	333	345	367	369	373	380	384	386	*	*	*	*
1-3/4	28	320	322	335	348	370	372	375	384	387	391	*	*	*	*
2	32	324	325	338	351	372	375	382	390	391	397	*	*	*	*
2-1/8	34	326	327	340	-	-	-	-	-	-	-	-	-	-	-
2-1/4	36	329	331	341	356	380	381	389	395	397	402	*	*	*	*
2-1/2	40	333	340	348	360	382	385	395	398	402	407	*	*	*	*
2-3/4	44	341	343	358	374	386	389	400	406	407	413	*	*	*	*
3	48	355	356	367	379	390	393	407	411	414	419	*	*	*	*
3-1/4	52	358	360	376	381	395	397	415	419	420	424	*	*	*	*
3-1/2	56	361	363	378	386	398	401	421	423	426	431	*	*	*	*
3-3/4	60	364	367	381	388	402	405	428	431	432	438	*	*	*	*
4	64	366	368	382	390	406	409	435	439	440	447	*	*	*	*
4-1/4	68	370	372	387	397	410	413	440	447	449	456	*	*	*	*
4-1/2	72	374	376	390	402	414	417	448	456	458	463	*	*	*	*
4-3/4	76	378	380	395	406	418	424	454	461	466	472	*	*	*	*
5	80	380	384	399	413	424	427	461	469	475	481	*	*	*	*
5-1/2	88	-	-	-	-	-	435	470	484	492	497	*	*	*	*
6	96	-	-	-	-	-	-	-	497	506	513	*	*	*	*
6-1/2	104	-	-	-	-	-	-	-	-	523	530	*	*	*	*
7	112	-	-	-	-	-	-	-	-	-	-	*	*	*	*

*. Priced upon request