

BODIES FOR SWIVEL SCREW CLAMPS - CONTINUED

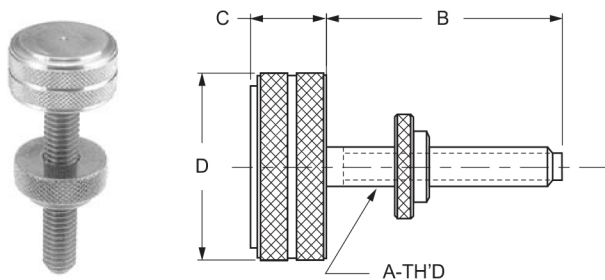
Case Hardened - Hex Socket Head

P/N	DIMENSIONS		
	A	B	C
140-40	3/8-16	11/16	3/16
140-45	3/8-16	15/16	3/16
140-50	3/8-16	1-7/16	3/16
140-55	3/8-16	1-15/16	3/16
140-60	1/2-13	11/16	1/4
140-65	1/2-13	15/16	1/4
140-70	1/2-13	1-7/16	1/4
140-80	1/2-13	2-15/16	1/4

Back off action of these Torque screws is positive, assuring speedy unload of fixture or tool. Check Nuts are furnished with each torque screw at no additional cost. The Check Nut prevents backing off during operation due to chatter or vibration. The O.D. thread are Class 2-A, I.D. threads Class 2-B.

Torque Screws have many holding applications in the construction of jigs, fixtures and other special tooling. They are used extensively in supporting parts against cutting tool thrust. The controlled end pressure prevents over-tightening, the results being that spoilage due to deflection is eliminated. The head of the screw ratchets freely when the pre-set end pressure is reached.

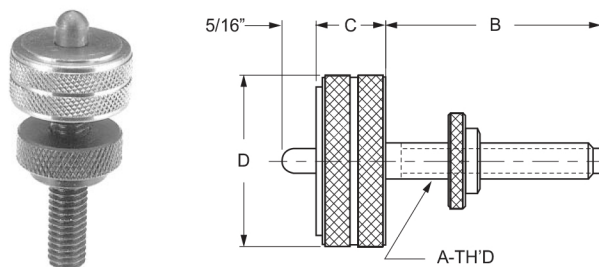
For use in all normal supporting operations.



TORQUE SCREWS						
Type A Standard, Black Oxide Finish						
P/N	DIMENSIONS					
	A	B	C	D	END PRESSURE (LBS)	
*141-10	1/4-20	2-1/2	1/2	7/8	12-14	
*141-15	5/16-18	1-3/4	1/2	7/8	14-16	
*141-25	5/16-18	3	1/2	7/8	14-16	
*141-40	3/8-16	3	9/16	1-1/8	16-18	
*141-45	1/2-13	1-3/4	9/16	1-1/8	18-20	
*141-50	1/2-13	2-1/4	9/16	1-1/8	18-20	
*141-60	1/2-13	3-1/2	9/16	1-1/8	18-20	
*141-65	5/8-11	1-3/4	9/16	1-1/8	20-22	
*141-70	5/8-11	3	9/16	1-1/8	20-22	

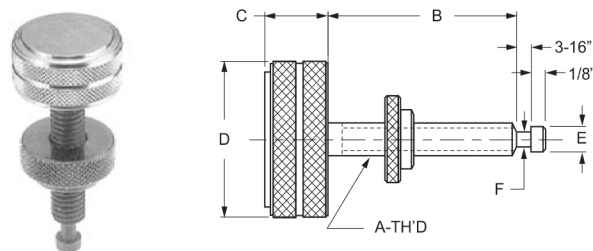
* Discontinued but available while supplies last.

This Torque Screw is for use in all inverted positions.



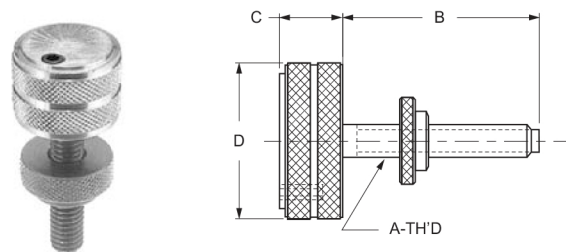
TORQUE SCREWS					
Type B Inverted - Black Oxide Finish					
P/N	DIMENSIONS				
	A	B	C	D	END PRESSURE (LBS)
*142-05	3/8-16	1-3/4	9/16	1-1/8	16-18
*142-10	1/2-13	1-3/4	9/16	1-1/8	18-20

This torque Screw is for use in sliding V blocks. The tee end fits V-block forward and reverse motion.



TORQUE SCREWS							
Type C - Black Oxide Finish							
P/N	DIMENSIONS						END PRESSURE (LBS)
	A	B	C	D	E	F	
*143-10	1/2-13	1-3/4	9/16	1-1/8	.396	.276	26-28

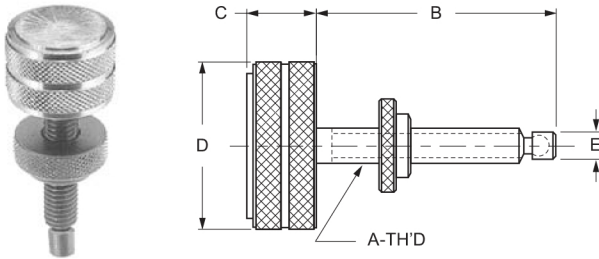
With this Torque Screw a simple wrench adjustment in the head permits holding pressure to be varied as needed. They are perfect for support with either fragile or heavy work pieces.



ADJUSTABLE TORQUE SCREWS					
Type D - Black Oxide Finish					
P/N	DIMENSIONS				
	A	B	C	D	END PRESSURE (LBS)
*144-00	3/8-16	1-3/4	25/32	1-1/8	10-50
*144-05	3/8-16	3	25/32	1-1/8	10-50
*144-10	1/2-13	1-3/4	25/32	1-1/8	10-50

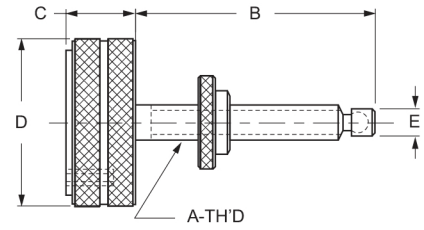
TORQUE SCREWS

Torque Head screws with swivel pads have a clamping angle of 7 1/2° minimum in each direction - a total of 15°. They hold firmly on irregular surface. Nylon pads are available on torque head screws with swivel pads. The nylon ads snap on over existing ball ends. They will not sag when used in horizontal applications, but allows 7-1/2° swivel when clamping angular surfaces. The O.D. of the pad is smaller than the major pitch diameter, thus allowing the ad to pass though a threaded hole wityhout disassembly. a simple wrench adjustment in the adjustable torque head screw permits holding pressures to be varied as needed.



STANDARD TORQUE HEAD SCREWS WITH SWIVEL PAD						
Steel Pads - Black Oxide Finish						
P/N	DIMENSIONS					END PRESSURE (LBS)
	A	B	C	D	E	
*145-00	1/4-20	2-1/4	1/2	7/8	.185	12 - 14
*145-10	3/8-16	2-1/4	9/16	1-1/8	.293	16 - 18

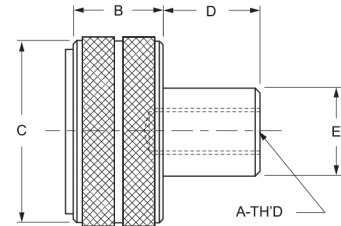
STANDARD TORQUE HEAD SCREWS WITH SWIVEL PAD						
Nylon Pads - Black Oxide Finish						
P/N	DIMENSIONS					END PRESSURE (LBS)
	A	B	C	D	E	
*146-05	5/6-18	2-1/4	1/2	7/8	.240	14 - 16



ADJUSTABLE TORQUE HEAD SCREWS WITH SWIVEL PAD						
Steel Pads - Black Oxide Finish						
P/N	DIMENSIONS					END PRESSURE (LBS)
	A	B	C	D	E	
*147-10	1/2-13	1-3/4	25/32	1-1/8	.400	0 - 50

ADJUSTABLE TORQUE HEAD SCREWS WITH SWIVEL PAD						
Nylon Pads - Black Oxide Finish						
P/N	DIMENSIONS					END PRESSURE (LBS)
	A	B	C	D	E	
*148-05	3/8-16	3	25/32	1-1/8	.293	0 - 50
*148-10	1/2-13	1-3/4	25/32	1-1/8	.400	0 - 50

This usefull torque-controlled device controls forward force in assemblies, machinery, etc., where ordinary torque screws would require considerable machining or customization. A simple wrench adjustment in the torque handle head permits holding pressure to be varied as needed. Controlled end pressure for all fixture applications.



TORQUE HANDLE						
Threaded insert is Case Hardened!						
P/N	DIMENSIONS					END PRESSURE (LBS)
	A	B	C	D	E	
*149-05	3/8-16	7/8	1-1/4	7/16	5/8	15-115

* Discontinued but available while supplies last.