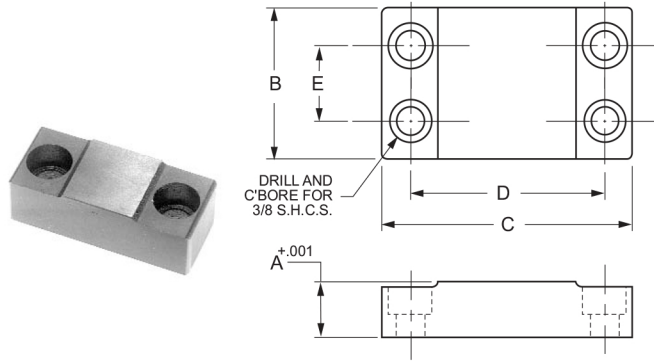
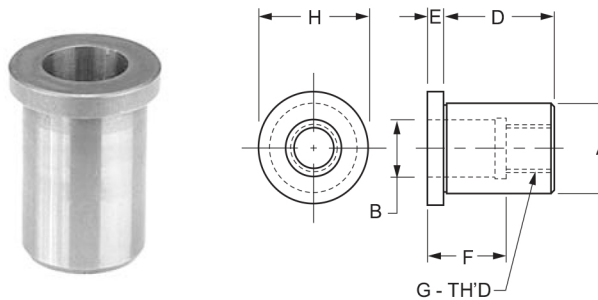


THREADED INSERTS



REST PADS					
Hardened Steel - Black Oxide Finish					
P/N	DIMENSIONS				
	A	B	C	D	E
403-00	.739	1	2-3/8	1-5/8	*
403-05	.739	2	3-3/8	2-5/8	1

* Rest Pad has only two holes.

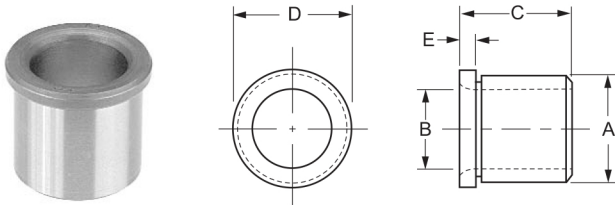


THREADED RETAINERS							
O.D. Ground Oversize - Case Hardened							
P/N	DIMENSIONS						
	A	B	D	E	F	G	H
405-00	.457 .452	.3126 .3128	21/32	3/32	1/2	1/4-28	9/16
405-05	.707 .702	.4376 .4378	7/8	1/8	5/8	3/8-24	7/8
405-10	.832 .827	.5626 .5629	1-5/32	5/32	3/4	1/2-20	1
405-15	1.270 1.265	.8751 .8754	1-1/2	1/4	1-1/8	3/4-16	1-9/16

HEADLESS RETAINERS

THREADED RETAINERS O.D. Finnish Ground - Case Hardened							
P/N	DIMENSIONS						
	A	B	D	E	F	G	H
405-25	.4392 .4389	.3126 .3128	21/32	3/32	1/2	1/4-28	9/16
405-30	.6893 .6590	.4376 .4378	7/8	1/8	5/8	3/8-24	7/8
405-35	.8143 .8140	.5626 .5629	1-5/32	5/32	3/4	1/2-20	1
405-40	1.2522 1.2518	.8751 .8754	1-1/2	1/4	1-1/8	3/4-16	1-9/16

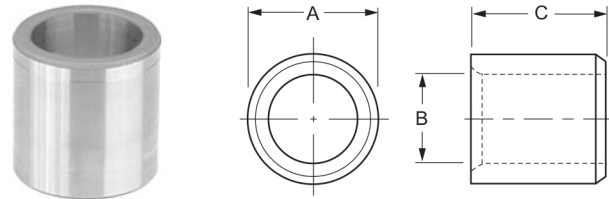
These bushings are used in fixtures and other mating parts in conjunction with locating pins.



SHOULDER RETAINERS O.D. UnGround - Case Hardened					
P/N	DIMENSIONS				
	A	B	C	D	E
407-00	.520/.515	.3126/.3129	1/2	5/8	3/32
407-05	.770/.765	.5002/.5005	3/4	7/8	3/32
407-10	1.020/1.015	.7503/.7506	1	1-1/8	1/8
407-15	1.395/1.390	1.0004/1.0007	1-3/8	1-1/2	1/8

SHOULDER RETAINERS O.D. Finnish Ground - Case Hardened					
P/N	DIMENSIONS				
	A	B	C	D	E
408-00	.5017/.5014	.3126/.3129	1/2	5/8	3/32
408-05	.7518/.7515	.5002/.5005	3/4	7/8	3/32
408-10	1.0018/1.0015	.7503/.7506	1	1-1/8	1/8
408-15	1.3772/1.3768	1.0004/1.0007	1-3/8	1-1/2	1/8

These bushings are used in fixtures and other mating parts in conjunction with locating pins.



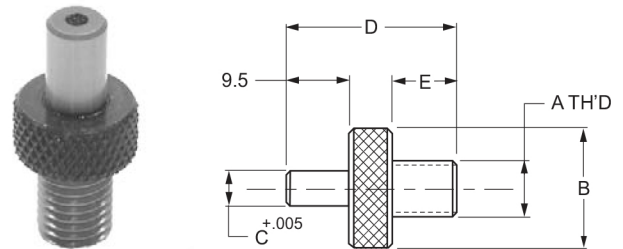
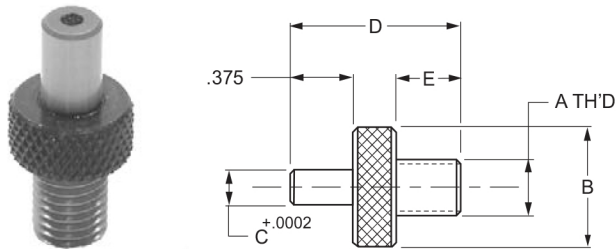
HEADLESS RETAINERS O.D. Unground - Case Hardened			
P/N	DIMENSIONS		
	A	B	C
409-00	.520/.515	.3126/.3129	1/2
409-05	.770/.765	.5002/.5005	3/4
409-10	1.020/1.015	.7503/.7506	1
409-15	1.395/1.390	1.0004/1.0007	1-3/8

HEADLESS RETAINERS O.D. Finnish Ground - Case Hardened			
P/N	DIMENSIONS		
	A	B	C
410-00	.5017/.5014	.3126/.3129	1/2
410-05	.7518/.7515	.5002/.5005	3/4
410-10	1.0018/1.0015	.7503/.7506	1
410-15	1.3772/1.3768	1.0004/1.0007	1-3/8

TAPPED HOLE LOCATION GAGES

- Material: C1144 Hardened and Ground C62/64 Rc
- Black oxide finish on collar only
- English Tapped Hole Location Gages are used to accurately measure the distance between two tapped holes in a work piece
- Shaft size is the same diameter on all gages to simplify calculation of the hole spread
- All diameters are concentric within .0002 T.I.R.
- One Piece construction

- Material: C1144 Hardened and Ground C62/64 Rc
- Black oxide finish on collar only
- Metric Tapped Hole Location Gages are used to accurately measure the distance between two tapped holes in a workpiece
- Shaft size is the same diameter on all gages to simplify calculation of the hole spread
- All diameters are concentric within .0002 T.I.R.
- One Piece construction
- Thread Class: 6G



TAPPED HOLE LOCATION GAGES UNC					
P/N	DIMENSIONS				
	A	B	C	D	E
415-00	2-56	5/16	.2500	7/8	1/4
415-01	4-40	5/16	.2500	7/8	1/4
415-03	6-32	5/16	.2500	7/8	1/4
415-04	8-32	5/16	.2500	7/8	1/4
415-05	10-24	5/16	.2500	7/8	1/4
415-06	1/4-20	3/8	.2500	1	3/8
415-07	5/16-18	1/2	.2500	1	3/8
415-08	3/8-16	1/2	.2500	1	3/8
415-10	1/2-13	7/8	.2500	1	3/8
415-11	5/8-11	7/8	.2500	1	3/8

METRIC TAPPED HOLE LOCATION GAGES					
P/N	DIMENSIONS				
	A	B	C	D	E
415-31	M2.0 x .40	7.95	6.35	22	6.35
415-32	M2.5 x .45	7.95	6.35	22	6.35
415-33	M3.0 x .50	7.95	6.35	22	6.35
415-34	M4.0 x .70	7.95	6.35	22	6.35
415-35	M5.0 x .80	9.53	6.35	22	6.35
415-36	M6.0 x 1.00	9.53	6.35	22	6.35
415-37	M8.0 x 1.25	12.70	6.35	28	6.35

TAPPED HOLE LOCATION GAGES UNF					
P/N	DIMENSIONS				
	A	B	C	D	E
415-21	10-32	5/16	.2500	7/8	1/4
415-22	1/4-28	3/8	.2500	1	3/8
415-23	5/16-24	1/2	.2500	1	3/8
415-24	3/8-24	1/2	.2500	1	3/8
415-25	1/2-20	7/8	.2500	1	3/8
415-26	5/8-18	7/8	.2500	1	3/8