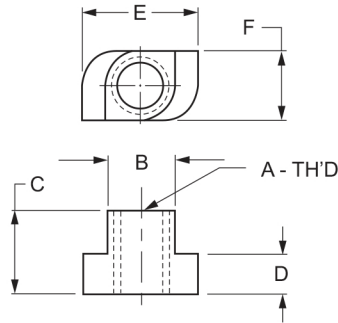
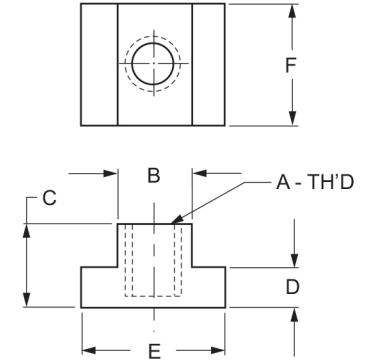


# T-SLOT NUTS

The Quarter Turn T-Slot Nut is easy to use. A stud or bolt can be installed directly into the slot and then given a quarter turn. The Quarter Turn T-slot Nut can also be inserted as shown. Simply place it in the slot and rotate a quarter turn.



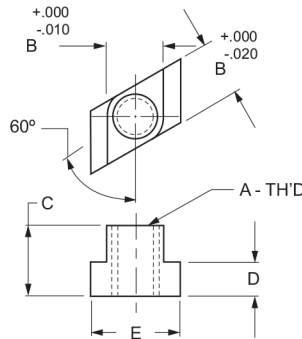
The last thread on the T-Slot is incomplete to prevent the stud from turning through to the bottom of the machining table. Run the stud to the bottom though for maximum hold. Tapped through T-Slot Nuts are also available. To order tapped through, add a "T" after the part number. Special sizes are quoted on request.



UNIQUE QUARTER TURN T-SLOT NUT						
Hot Forged - Case Hardened - Black Oxide Finish						
P/N	DIMENSIONS					
	A	B	C	D	E	F
255-15*	3/4-10	1	1	5/8	1-5/8	1

\* Discontinued but available while supplies last.

- Add studs and clamp straps without tearing down previous set-ups.
- Supplements standard T-Slot Nuts.
- Seven sizes are available, covering 3/8", 1/2", 5/8" and 3/4" stud diameter slot width.
- Last thread is closed.



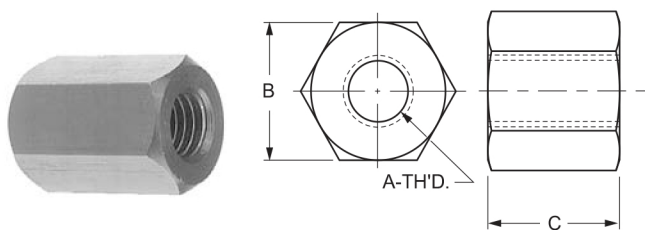
METRIC T-SLOT NUTS							
Case Hardened - Black Oxide Finish							
P/N	DIMENSIONS						
	A	B METRIC	*B INCH	C	D	E	F
259-00	M6 x 1.00	8	5/16	10	6	14	19
259-01	M6 x 1.00	10	7/16	11	6	16	22
259-02	M8 x 1.25	10	7/16	11	6	16	22
259-03	M10 x 1.50	12	1/2	13	7	19	22
259-04	M10 x 1.50	14	9/16	16	9	22	29
259-05	M12 x 1.75	14	9/16	16	9	22	29
259-06	M12 x 1.75	16	5/8	16	9	25	29
259-07	M12 x 1.75	17	11/16	19	11	29	32
259-08	M16 x 2.00	18	3/4	19	11	29	32
259-09	M16 x 2.00	20	13/16	25	14	32	38
259-10	M20 x 2.50	22	7/8	25	14	35	38

\* Metric T-Slot Nut will fit the inch machine T-Slots.

ROTARY T-SLOT NUT						
Case Hardened - Heat Treated - Black Oxide Finish						
P/N	DIMENSIONS					
	A	B	C	D	E	Table Slot
255-20	3/8-16	.495	1/2	9/32	7/8	1/2
255-22	1/2-13	.557	5/8	11/32	7/8	9/16
255-24	1/2-13	.620	5/8	11/32	1	5/8
255-26	1/2-13	.682	3/4	7/16	1-1/8	11/16
255-28	5/8-11	.682	3/4	7/16	1-1/8	11/16
255-30	5/8-11	.745	3/4	15/32	1-1/8	3/4
255-32	3/4-10	.995	1	5/8	1-5/8	1

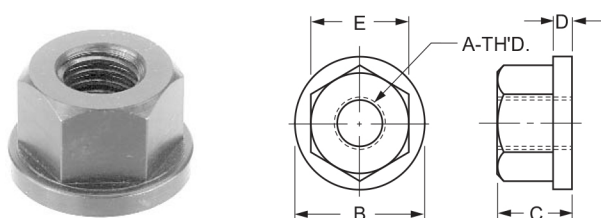
# NUTS AND T-SLOT NUTS

Coupling Nuts can be used to join two or more studs to achieve the desired length.



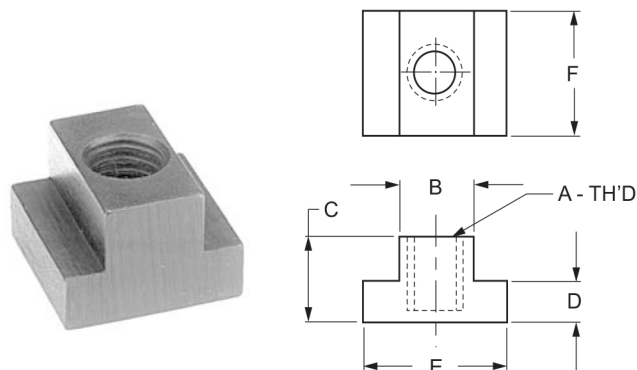
<b>METRIC COUPLING EXTENSION NUT</b>			
Case Hardened - Black Oxide Finish			
P/N	DIMENSIONS		
	A	B	C
259-15	M6 x 1.00	13	16
259-16	M8 x 1.25	14	19
259-17	M10 x 1.50	16	24
259-18	M12 x 1.75	22	32
259-19	M16 x 2.00	27	40
259-20	M20 x 2.50	32	51

Flange Nuts will equalize thread loads when used with a spherical washers.



<b>METRIC FLANGE NUT</b>					
Case Hardened - Black Oxide Finish					
P/N	DIMENSIONS				
	A	B	C	D	E
259-25	M6 x 1.00	16	8	2.0	10
259-26	M8 x 1.25	19	10	2.5	13
259-27	M10 x 1.50	22	13	3.0	17
259-28	M12 x 1.75	27	17	4.0	19
259-29	M16 x 2.00	33	21	5.0	24
259-30	M20 x 2.50	40	25	6.0	30

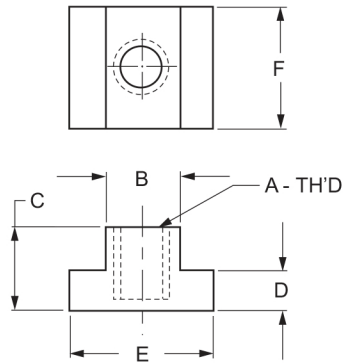
The last thread on the T-Slot is incomplete to prevent the stud from turning through the bottom of the machining table. Run the stud to the bottom though for maximum hold. Tapped through T-Slot Nuts are also available. To order tapped through , add a "T" after the part number. Special Sizes are quoted on request.



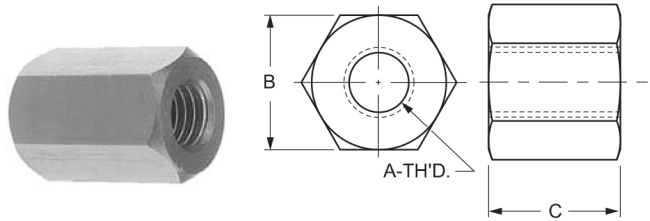
<b>T-SLOT NUTS</b>							
Case Hardened - Black Oxide Finish							
P/N	DIMENSIONS						
	A	B METRIC	*B INCH	C	D	E	F
259-97	5/16-18	12mm	7/16	1/2	9/32	7/8	7/8
259-98	5/16-18	10mm	3/8	1/2	3/16	5/8	7/8
259-99	5/16-18	13mm	1/2	1/2	9/32	7/8	7/8
260-00	1/4-20	8mm	5/16	1/4	3/16	9/16	9/16
260-01	1/4-20	10mm	3/8	3/8	15/16	9/16	9/16
260-02	5/16-18	10mm	3/8	3/8	1/4	5/8	7/8
260-03	3/8-16	12mm	7/16	1/2	7/32	11/16	7/8
260-04	3/8-16	12mm	1/2	1/2	9/32	7/8	7/8
260-05	3/8-16	15mm	9/16	5/8	11/32	7/8	1-1/8
260-06	7/16-14	13mm	1/2	1/2	9/32	7/8	7/8
260-07	7/16-14	13mm	1/2	3/8	7/32	3/4	7/8
260-08	1/2-13	15mm	9/16	5/8	11/32	7/8	1-1/8
260-09	1/2-13	16mm	5/8	5/8	11/32	1	1-1/8
260-10	1/2-13	16mm	5/8	3/4	3/8	1-1/8	1-1/8
260-11	1/2-13	18mm	11/16	3/4	7/16	1-1/8	1-1/4
260-12	1/2-13	20mm	3/4	3/4	15/32	1-1/4	1-1/4
260-13	5/8-11	18mm	11/16	3/4	7/16	1-1/8	1-1/4
260-14	5/8-11	20mm	3/4	3/4	15/32	1-1/4	1-1/4
260-15	3/4-10	21mm	13/16	1	9/16	1-1/4	1-1/2
260-16	3/4-10	21mm	13/16	1	9/16	1-1/4	1-1/2
260-17	3/4-10	23mm	7/8	1	9/16	1-1/2	1-1/2
260-18	3/4-10	26mm	1	1	5/8	1-5/8	1-3/4
260-19	3/4-10	26mm	1	1-1/2	3/4	1-3/4	1-3/4
260-20	3/4-10	27mm	1-1/16	1-1/8	11/16	1-5/8	2

\* Inch T-Slot Nut will fit the metric machine T-Slots.

# T-SLOT NUTS AND OTHER NUTS



Coupling Nuts can be used to join two or more studs to achieve the desired length.



<b>T-SLOT NUTS - CONTINUED</b> Case Hardened - Black Oxide Finish							
P/N	DIMENSIONS						
	A	B METRIC	*B INCH	C	D	E	F
260-21	7/8-9	26mm	1	1	5/8	1-5/8	1-3/4
260-22	7/8-9	27mm	1-1/16	1-1/8	11/16	1-5/8	2
260-23	7/8-9	28mm	1-1/8	1-1/2	3/4	1-3/4	2
260-24	1/8	27mm	1-1/16	1-1/8	11/16	1-5/8	2
260-25	1/8	32mm	1-1/8	1-1/2	3/4	1-3/4	2
260-26	1/8	32mm	1-1/4	1-1/4	7/8	2	2
260-27	7/8-9	34mm	1-5/16	1-1/4	15/16	2	2
260-28	1-8	34mm	1-5/16	1-1/4	15/16	2	2
260-30	1-1/4-7	36mm	1-3/8	1-3/4	1-1/8	2-1/2	2-1/2

<b>STAINLESS STEEL T-SLOT NUTS</b>						
P/N	DIMENSIONS					
	A	*B INCH	C	D	E	F
260-50	1/4-20	5/16	1/4	3/16	1/2	9/16
260-51	5/16-18	3/8	3/8	1/4	5/8	7/8
260-52	3/8-16	7/16	3/8	13/64	5/8	7/8
260-53	3/8-16	1/2	1/2	9/32	7/8	7/8
260-54	1/2-13	9/16	1/2	11/32	7/8	1-1/8
260-55	1/2-13	5/8	5/8	11/32	1	1-1/8
260-56	1/2-13	11/16	3/4	7/16	1	1-1/4
260-57	5/8-11	11/16	3/4	7/16	1	1-1/4
260-58	5/8-11	3/4	3/4	15/32	1-1/4	1-1/4

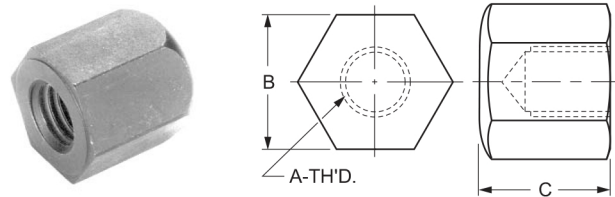
\* Inch T-Slot Nut will fit the metric machine T-Slots.

## COUPLING EXTENSION NUT

Case Hardened - Black Oxide Finish

P/N	DIMENSIONS		
	A	B	C
261-00	1/4-20	1/2	5/8
261-01	5/16-18	9/16	7/8
261-02	3/8-16	11/16	1
261-03	7/16-14	3/4	1-1/4
261-04	1/2-13	7/8	1-1/4
261-05	5/8-11	1-1/6	1-5/8
261-06	3/4-10	1-1/4	1-7/8
261-07	7/8-9	1-7/16	2-1/4
261-08	1-8	1-5/8	2-1/2
261-10	1-1/4-7	1-7/8	3

The closed end of the Acorn Nut protects the thread from damage and keeps out the grit and chips.



## ACORN NUTS

Case Hardened - Black Oxide Finish

P/N	DIMENSIONS		
	A	B	C
262-00	1/4-20	1/2	1/2
262-05	5/16-18	9/16	5/8
262-10	3/8-16	11/16	3/4
262-15	1/2-13	7/8	15/16
262-20	5/8-11	1-1/16	1-3/16
262-25	3/4-10	1-1/4	1-3/8
262-30	7/8-9	1-7/16	1-7/16