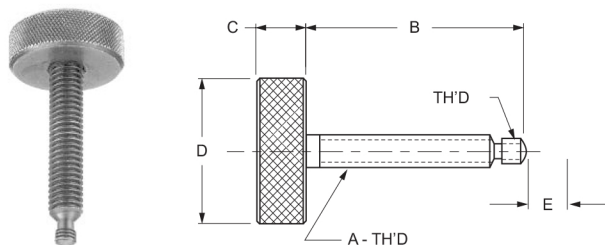


SWIVEL SCREWS

All the pads for this Swivel Screw are interchangeable and swivel 40°. Add pad dimension "E" for overall length

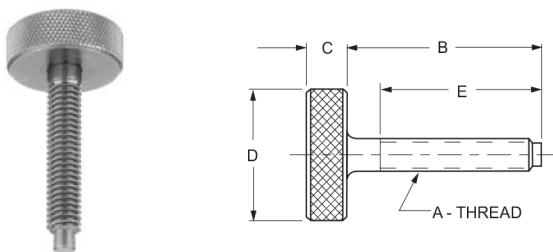
NOTE: For pads, see part #132-05 through 132-65.



BODIES FOR SWIVEL SCREW CLAMPS

Knurled Head - Black Oxide Finish

P/N	DIMENSIONS			
	A	B	C	D
115-00	1/4-20	1-15/32	5/16	1
115-01	1/4-20	1-31/32	5/16	1
115-02	5/16-18	1-15/32	3/8	1-1/8
115-03	5/16-18	1-31/32	3/8	1-1/8
115-04	5/16-18	2-15/32	3/8	1-1/8
115-05	3/8-16	1-7/16	7/16	1-1/4
115-06	3/8-16	1-15/16	7/16	1-1/4
115-07	3/8-16	2-7/16	7/16	1-1/4
115-08	3/8-16	2-15/16	7/16	1-1/4
115-12	1/2-13	2-15/16	7/16	1-1/4



SCREWS DOG POINT

Knurled Head - Black Oxide Finish

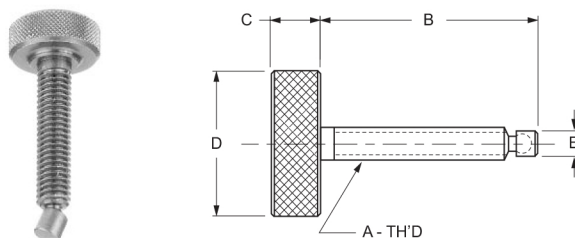
P/N	DIMENSIONS				
	A	B	C	D	E
116-00	10-24	1	1/4	3/4	3/4
116-01	10-24	1-1/2	1/4	3/4	1-1/4
116-02	10-24	2	1/4	3/4	1-3/4
116-03	10-32	1-1/2	1/4	3/4	1-1/4
116-04	1/4-20	1-1/2	5/16	1	1-1/4
116-05	1/4-20	2	5/16	1	1-3/4
116-06	1/4-20	2-1/2	5/16	1	2-1/4
116-07	5/16-18	1-1/2	3/8	1-1/8	1-1/4
116-08	5/16-18	2	3/8	1-1/8	1-3/4
116-09	5/16-18	2-1/2	3/8	1-1/8	2-1/4
116-10	3/8-16	2	7/16	1-1/4	1-3/4
116-11	3/8-16	2-1/2	7/16	1-1/4	2-1/4

SCREWS DOG POINT - CONTINUED

Knurled Head - Black Oxide Finish

P/N	DIMENSIONS				
	A	B	C	D	E
116-12	3/8-16	3	7/16	1-1/4	2-3/4
116-13	1/2-13	3	1/2	1-1/4	2-3/4
116-14	1/2-13	3-1/2	1/2	1-1/4	3-1/4

These Swivel Screws are for use when finger-tight clamping is sufficient. The wide knurled head gives good gripping and assures fast screw in. The pad will swivel 7-1/2" in any direction.



SWIVEL SCREWS

Knurled Head - Black Oxide Finish

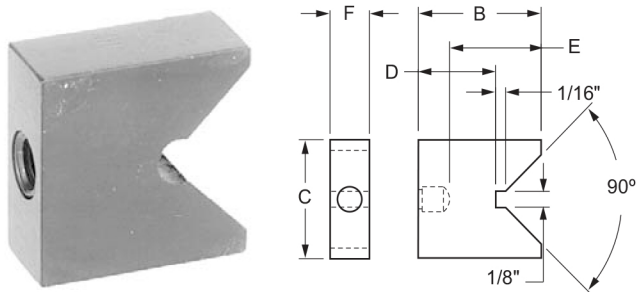
P/N	DIMENSIONS						
	STEEL PAD	NYLON PAD	A	B	C	D	E
121-00	122-00	1/4-20	1-1/2	5/16	7/8	.185	900
121-05	122-02	1/4-20	2	5/16	7/8	.185	900
121-10	122-10	5/16-18	1-1/2	5/16	7/8	.240	2290
121-15	122-15	5/16-18	2	5/16	7/8	.240	2290
121-20	122-20	5/16-18	2-1/2	5/16	7/8	.240	2290
121-25	122-25	3/8-16	1-1/2	3/8	1	.293	3340
121-30	122-30	3/8-16	2	3/8	1	.293	3340
121-35	122-35	3/8-16	2-1/2	3/8	1	.293	3340
121-40	122-40	3/8-16	3	3/8	1	.293	3340
121-45	122-45	1/2-13	1-1/2	3/8	1	.400	7300
121-50	122-50	1/2-13	2	3/8	1	.400	7300
121-55	122-55	1/2-13	2-1/2	3/8	1	.400	7300
121-60	122-60	1/2-13	3	3/8	1	.400	7300

V Steel Only 132-65* BALL Steel Only 132-40 LARGE Steel Only 132-15 SMALL Steel or Nylon 131-20



* Discontinued but available while supplies last.

SWIVEL SCREWS

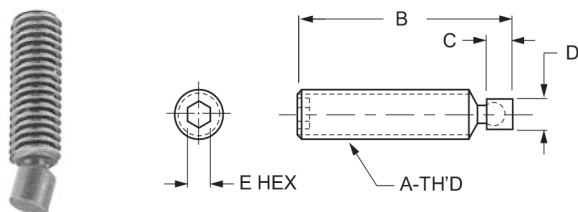


V - PADS FOR SWIVEL SCREW CLAMPS

Case Hardened - Black Oxide Finish

P/N	DIMENSIONS					
	FITS BODY THREAD SIZE	B	C	D	E	F
*132-50	1/4-20	7/8	1	1/2	45/64	5/16
*132-55	5/16-18	15/16	1	9/16	47/64	3/8
*132-60	3/8-16	1	1	5/8	47/64	7/16
*132-65	1/2-13	1-1/2	2	11/16	1-13/64	1/2

These swivel screws are for use wherever maximum rigidity is necessary or where space is limited.



HEX SOCKET SWIVEL SCREWS

Case Hardened - Black Oxide Finish

P/N		DIMENSIONS					
STEEL PAD	NYLON PAD	A	B	C	D	E	LOAD(LBS)
135-00	135-50	10-32	1/2	1/8	.146	3/32	500
135-01	135-51	1/4-20	1/2	3/16	.185	1/8	900
135-02	135-52	1/4-20	3/4	3/16	.185	1/8	900
135-03	135-53	1/4-20	1	3/16	.185	1/8	900
135-04	135-54	1/4-20	1-1/2	3/16	.185	1/8	900
135-05	135-55	5/16-18	3/4	15/64	.240	1/8	2290
135-06	135-56	5/16-18	1	15/64	.240	1/8	2290
135-07	135-57	5/16-18	1-1/4	15/64	.240	1/8	2290
135-08	135-58	5/16-18	1-1/2	15/64	.240	1/8	2290
135-09	135-59	5/16-18	2	15/64	.240	1/8	2290
135-10	135-60	3/8-16	3/4	9/32	.293	3/16	3340
135-11	135-61	3/8-16	1	9/32	.293	3/16	3340
135-12	135-62	3/8-16	1-1/2	9/32	.293	3/16	3340
135-13	135-63	3/8-16	2	9/32	.293	3/16	3340
135-14	135-64	1/2-13	3/8	3/4	.400	3/16	7300
135-15	135-65	1/2-13	1	3/4	.400	3/16	7300
135-16	135-66	1/2-13	1-1/2	3/4	.400	3/16	7300
135-17	135-67	1/2-13	2	3/4	.400	3/16	7300

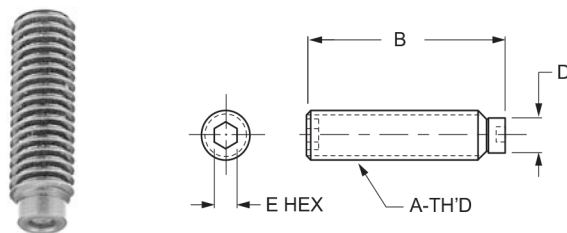
* Discontinued but available while supplies last.

HEX SOCKET SWIVEL SCREWS - CONTINUED

Case Hardened - Black Oxide Finish

P/N		DIMENSIONS					
STEEL PAD	NYLON PAD	A	B	C	D	E	LOAD(LBS)
135-18	135-68	1/2-13	2-1/2	3/4	.400	3/16	7300
135-19	135-69	1/2-13	3	3/4	.400	3/16	7300
135-20	135-70	5/8-11	2	7/16	.506	1/4	11700
135-21	135-71	5/8-11	2-1/2	7/16	.506	1/4	11700
135-22	135-72	5/8-11	3	7/16	.506	1/4	11700
135-23	135-73	3/4-10	2-1/2	13/32	.625	5/16	15000
135-24	135-74	3/4-10	3	13/32	.625	5/16	15000
135-25	135-75	3/4-10	3-1/2	13/32	.625	5/16	15000

The Headless Swivel screw features a hardened shoe that stop rotating upon contact with the part being clamped and prevents marring the work piece.



HEADLESS SWIVEL SCREW

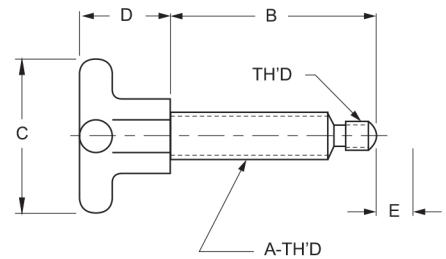
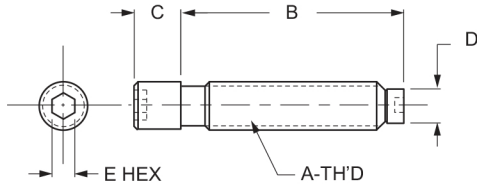
Case Hardened - Black Oxide Finish

P/N	DIMENSIONS			
	A	B	D	E
136-00	1/4-20	3/4	3/16	1/8
136-05	1/4-20	1	3/16	1/8
136-10	5/16-18	3/4	15/64	1/8
136-15	5/16-18	1	15/64	1/8
136-20	3/8-16	1	9/32	3/16
136-25	3/8-16	1-1/4	9/32	3/16
136-30	1/2-13	1	25/64	3/16
136-35	1/2-13	1-1/4	25/64	3/16
136-40	5/8-11	1	1/2	1/4
136-45	5/8-11	1-1/2	1/2	1/4

SWIVEL SCREWS

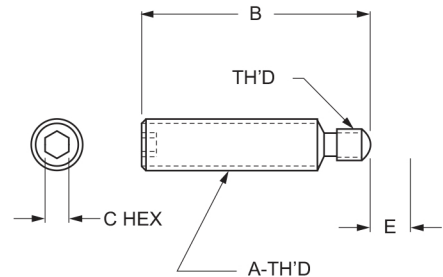
The Head Swivel screw features a hardened shoe that stops rotating upon contact with the part being clamped and prevents marring. These are for use when a longer reach is required.

All pads for swivel clamps are interchangeable and swivel 40°. To get the overall length, add pad dimension "E." For pads, see page 3.30 parts 131-05 through 132-65.



HEADLESS SWIVEL SCREW					
Black Oxide Finish - Case Hardened - Black Pentrate Finish					
P/N	DIMENSIONS				
	A	B	C	D	E
137-00	1/4-20	5/8	1/4	3/16	1/8
137-05	1/4-20	1	1/4	3/16	1/8
137-10	1/4-20	1-1/4	1/4	3/16	1/8
137-15	5/16-18	3/4	5/16	15/64	5/32
137-20	5/16-18	1-1/4	5/16	15/64	5/32
137-25	5/16-18	1-1/2	5/16	15/64	5/32
137-30	3/8-16	1	3/8	9/32	3/16
137-35	3/8-16	1-1/4	3/8	9/32	3/16
137-40	3/8-16	1-1/2	3/8	9/32	3/16
137-45	3/8-16	2	3/8	9/32	3/16
137-50	1/2-13	1-1/2	1/2	25/64	1/4
137-55	1/2-13	2	1/2	25/64	1/4
137-60	1/2-13	2-1/2	1/2	25/64	1/4
137-65	5/8-11	2	5/8	1/2	5/16
137-70	5/8-11	2-1/2	5/8	1/2	5/16
137-75	5/8-11	3	5/8	1/2	5/16

BODIES FOR SWIVEL SCREW CLAMPS				
Aluminum Hand Knob Head - Black Oxide Finish				
P/N	DIMENSIONS			
	A	B	C	D
*138-00	1/4-20	1-15/16	1-1/8	3/4
*138-05	1/4-20	1-31/32	1-1/8	3/4
*138-10	5/16-18	1-15/32	1-1/2	7/8
*138-20	5/16-18	2-15/32	1-1/2	7/8
*138-25	3/8-16	1-7/16	2	1
*138-30	3/8-16	1-15/16	2	1
*138-40	3/8-16	2-15/16	2	1
*138-45	1/2-13	1-7/16	2-1/2	1-1/2
*138-60	1/2-13	2-15/16	2-1/2	1-1/2
*138-65	1/2-13	3-15/16	2-1/2	1-1/2



BODIES FOR SWIVEL SCREW CLAMPS			
Hex Socket Head - Black Oxide Finish			
P/N	DIMENSIONS		
	A	B	C
140-00	1/4-20	15/32	1/8
140-05	1/4-20	23/32	1/8
140-10	1/4-20	31/32	1/8
140-15	1/4-20	1-15/32	1/8
140-20	5/16-18	23/32	5/32
140-25	5/16-18	31/32	5/32
140-30	5/16-18	1-15/32	5/32
140-35	5/16-18	1-31/32	5/32

* Discontinued but available while supplies last.