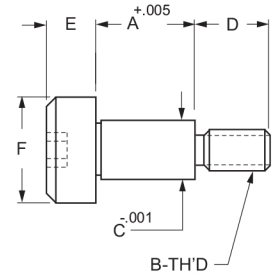
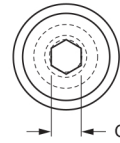
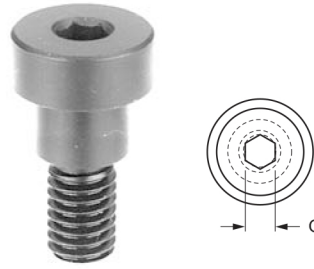


SCREWS

These are nylon pads used with knurled head swivel screws protect the finish on delicate work pieces.



NYLON PADS FOR KNURLED SWIVEL SCREWS

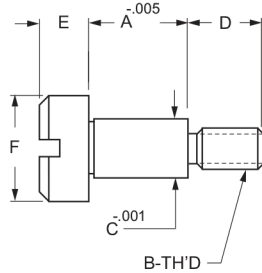
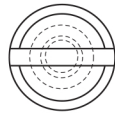
Nylon Pad Only

P/N	Fits the Following Parts
122.65	122-00 / 122-05
122.70	122-10 / 122-15 / 122-20
122.75	122-25 / 122-30 / 122-35 / 122-40
122.80	122-45 / 122-50 / 122-55 / 122-60

SOCKET SHOULDER SCREWS

Case Hardened - Black Oxide Finish

P/N	DIMENSIONS						
	A	B	C	D	E	F	G
124-00	1/4	10-24	.250	3/8	3/16	3/8	1/8
124-01	5/16	10-24	.250	3/8	3/16	3/8	1/8
124-02	3/8	10-24	.250	3/8	3/16	3/8	1/8
124-03	1/2	10-24	.250	3/8	3/16	3/8	1/8
124-04	5/8	10-24	.250	3/8	3/16	3/8	1/8
124-05	3/4	10-24	.250	3/8	3/16	3/8	1/8
124-06	7/8	10-24	.250	3/8	3/16	3/8	1/8
124-07	1	10-24	.250	3/8	3/16	3/8	1/8
124-08	1/4	1/4-20	.3125	7/16	7/32	7/16	5/32
124-09	5/16	1/4-20	.3125	7/16	7/32	7/16	5/32
124-10	3/8	1/4-20	.3125	7/16	7/32	7/16	5/32
124-11	1/2	1/4-20	.3125	7/16	7/32	7/16	5/32
124-12	5/8	1/4-20	.3125	7/16	7/32	7/16	5/32
124-13	3/4	1/4-20	.3125	7/16	7/32	7/16	5/32
124-14	1	1/4-20	.3125	7/16	7/32	7/16	5/32
124-15	1/4	1/4-20	.375	3/8	3/16	5/8	5/32
124-16	1/4	5/16-18	.375	1/2	1/4	9/16	3/16
124-17	5/16	5/16-18	.375	1/2	1/4	9/16	3/16
124-18	3/8	5/16-18	.375	1/2	1/4	9/16	3/16
124-19	1/2	5/16-18	.375	1/2	1/4	9/16	3/16
124-20	5/8	5/16-18	.375	1/2	1/4	9/16	3/16
124-21	3/4	5/16-18	.375	1/2	1/4	9/16	3/16
124-22	7/8	5/16-18	.375	1/2	1/4	9/16	3/16
124-23	1	5/16-18	.375	1/2	1/4	9/16	3/16
124-24	3/8	3/8-16	.500	5/8	5/16	3/4	1/4
124-25	1/2	3/8-16	.500	5/8	5/16	3/4	1/4
124-26	5/8	3/8-16	.500	5/8	5/16	3/4	1/4
124-27	3/4	3/8-16	.500	5/8	5/16	3/4	1/4
124-28	7/8	3/8-16	.500	5/8	5/16	3/4	1/4
124-29	1	3/8-16	.500	5/8	5/16	3/4	1/4
124-30	1/2	1/2-13	.625	3/4	3/8	7/8	5/16
124-31	5/8	1/2-13	.625	3/4	3/8	7/8	5/16
124-32	3/4	1/2-13	.625	3/4	3/8	7/8	5/16
124-33	7/8	1/2-13	.625	3/4	3/8	7/8	5/16
124-34	1	1/2-13	.625	3/4	3/8	7/8	5/16



SLOTTED SHOULDER SCREWS

Case Hardened - Black Oxide Finish

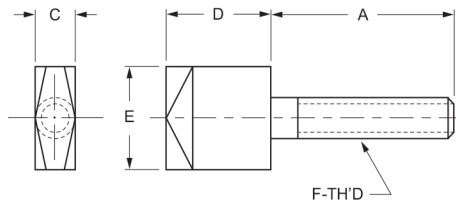
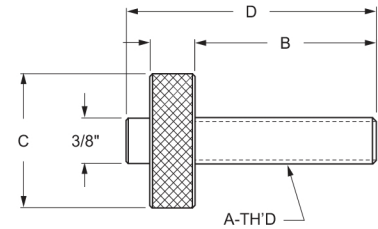
P/N	DIMENSIONS					
	A	B	C	D	E	F
123-00	.249	10-32	.072	1/4	1/8	1/2
123-01	.249	10-32	.135	1/4	1/8	1/2
123-02	.249	10-32	.197	1/4	1/8	1/2
123-03	.249	10-32	.260	1/4	1/8	1/2
123-04	.249	10-32	.322	1/4	1/8	1/2
123-10	.311	1/4-20	.252	3/8	3/16	3/4
123-20	.374	1/4-20	.135	3/8	5/32	3/4
123-21	.374	1/4-20	.197	3/8	3/16	5/8
123-22	.374	1/4-20	.252	3/8	5/32	3/4
123-23	.374	1/4-20	.260	3/8	5/32	5/8
123-24	.374	1/4-20	.314	3/8	3/16	3/4
123-25	.374	1/4-20	.322	3/8	5/32	5/8
123-26	.374	1/4-20	.385	3/8	5/32	3/4
123-30	.499	3/8-16	.377	5/8	1/4	3/4
123-31	.499	3/8-16	.502	5/8	1/4	3/4
123-32	.499	3/8-16	.510	1/2	3/16	7/8
123-33	.499	3/8-16	.627	5/8	1/4	3/4
123-34	.499	3/8-16	.635	1/2	3/16	7/8
123-35	.499	3/8-16	.752	5/8	1/4	3/4
123-36	.499	3/8-16	.760	1/2	3/16	7/8

SOCKET SHOULDER SCREWS - CONTINUED

Hardened Steel - Black Oxide Finish

P/N	DIMENSIONS						
	A	B	C	D	E	F	G
124-35	1/2	5/8-11	.750	7/8	1/2	1	3/8
124-36	5/8	5/8-11	.750	7/8	1/2	1	3/8
124-37	3/4	5/8-11	.750	7/8	1/2	1	3/8
124-38	7/8	5/8-11	.750	7/8	1/2	1	3/8
124-39	1	5/8-11	.750	7/8	1/2	1	3/8
124-40	1-1/4	5/8-11	.750	7/8	1/2	1	3/8

Jack Screws are used in fixtures to support irregularly shaped work pieces, such as castings, and to eliminate bowing or warping of thinner materials during machining.



QUARTER TURN SCREWS

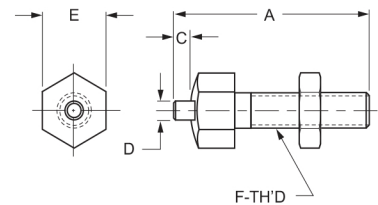
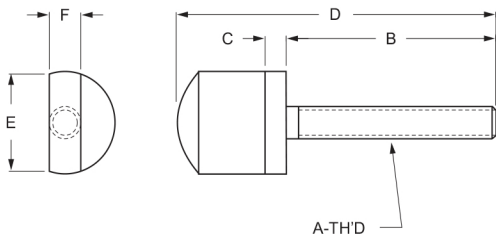
Case Hardened - Black Oxide Finish

P/N	DIMENSIONS				
	A	C	D	E	F
125-00	1	3/16	1/2	1/2	10-24
125-05	1	3/16	1/2	1/2	10-32
125-10	1-1/4	1/4	5/8	3/4	1/4-20
125-15	1-1/2	5/16	3/4	1	5/16-18
125-20	1-1/2	3/8	1	1	3/8-16

JACK SCREW

Case Hardened - Knurled Head - Black Oxide Finish

P/N	DIMENSIONS			
	A	B	C	D
127-00	3/8-16	1-1/4	1-1/8	1-7/8
127-05	3/8-16	1-5/8	1-1/8	2-1/2
127-10	3/8-16	2	1-1/8	2-5/8
127-15	1/2-13	1-1/4	1-1/8	1-7/8
127-20	1/2-13	1-5/8	1-1/8	2
127-25	1/2-13	2	1-1/8	2-5/8
127-30	1/2-13	2-1/2	1-1/8	3-1/8
127-35	5/8-11	1-5/8	1-3/8	2-1/4
127-40	5/8-11	2	1-3/8	2-5/8
127-45	5/8-11	2-1/2	1-3/8	3-1/2



HALF TURN SCREWS

Case Hardened - Black Oxide Finish

P/N	DIMENSIONS					
	A	B	C	D	E	F
126-00	10-24	1	3/16	1-11/16	3/4	3/16
126-05	1/4-20	1-1/4	3/16	2	3/4	1/4
126-10	5/16-18	1-1/4	3/16	2-1/16	1	5/16
126-15	3/8-16	1-3/4	1/4	2-11/16	1-1/16	3/8
126-20	1/2-13	1-3/4	1/4	23/4	1-1/4	1/2

CLAMP RESTS

Case Hardened - Black Oxide Finish

P/N	DIMENSIONS				
	A	C	D	E	F
128-00	1-1/4	1/8	5/32	7/16	1/4-20
128-02	1-7/8	3/16	7/32	1/2	5/16-18
128-05	2-1/4	7/32	11/32	9/16	3/8-16
128-10	2-3/8	1/4	11/32	11/16	1/2-13
128-15	3-7/8	1/4	11/32	11/16	1/2-13
128-18	2-7/8	1/4	15/32	7/8	5/8-11
128-20	3-7/8	1/4	15/32	7/8	5/8-11
128-25	2-3/4	1/4	15/32	1-1/16	3/4-10
128-30	3-7/8	1/4	15/32	1-1/16	3/4-10