

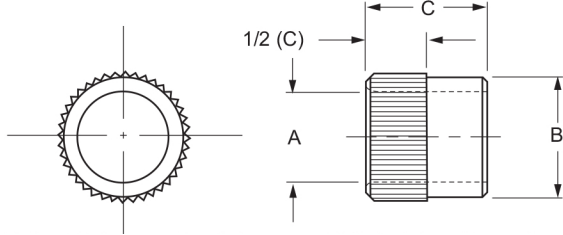
# SERRATA PRESS - TYPE SP & SPM

When ordering specify:

Example:

Quantity	Bushing Type	I.D.(A)	O.D.(B)	Length(C)
6	SP	5/16	5/8	3/4

Or: 6 SP-40-12-5/16



When ordering specify:

Example:

Quantity	Bushing Type	I.D.(A)	O.D.(B)	Length(C)
6	SPM	6	10	16

Or: 6 SPM-10-16-6



SERRATA PRESS - TYPE SP				
Standard - Finish ground O.D.				
A I.D. RANGE DRILL SIZE DIGITAL RANGE	B O.D. TOLERANCE NOMINAL ACTUAL	C	ANSI SYMBOL	PRICE CODE
#55-#39 (.0520 - .0995) 1.35 - 2.50mm	13/64 .2031 .2029	1/4	SP-13-4	127
		5/16	SP-13-5	134
		3/8	SP-13-6	136
		1/2	SP-13-8	139
#40 - 9/64 (.0980 - .1406) 2.50 - 3.50mm	1/4 .2500 .2498	1/4	SP-16-4	115
		5/16	SP-16-5	118
		3/8	SP-16-6	122
		1/2	SP-16-8	125
1/8 - #10 (.1250 - .1935) 3.20 - 4.90mm	5/16 .3125 .3123	5/16	SP-20-5	112
		3/8	SP-20-6	113
		1/2	SP-20-8	114
		3/4	SP-20-12	117
5/32 - F (.1562 - .2570) 4.00 - 6.50mm	13/32 .4062 .4060	1/4	SP-26-4	105
		5/16	SP-26-5	106
		3/8	SP-26-6	109
		1/2	SP-26-8	110
		3/4	SP-26-12	113
5/32 - 0 (.1562 - .3160) 4.00 - 8.00mm	1/2 .5000 .4998	*1	SP-26-16	118
		5/16	SP-32-5	106
		3/8	SP-32-6	109
		1/2	SP-32-8	110
		3/4	SP-32-12	113
5/16 - 7/16 (.3125 - .4375) 7.90 - 11.00mm	5/8 .6250 .6248	*1	SP-32-16	118
		3/8	SP-40-6	107
		1/2	SP-40-8	107
		3/4	SP-40-12	110
5/16 - 17/32 (.3125 - .5312) 8.00 - 13.00mm	3/4 .7500 .7498	1	SP-40-16	112
		3/8	SP-48-6	110
		1/2	SP-48-8	110
1/2 - 21/32 (.5000 - .6562) 13.00 - 16.50mm	7/8 .8750 .8748	3/4	SP-48-12	112
		1	SP-48-16	114
		3/8	SP-56-6	121
		1/2	SP-56-8	115
1/2-49/64 (.5000 - .7656) 13.00 - 19.00mm	1 1.0000 .9998	3/4	SP-56-12	117
		1	SP-56-16	119
		1/2	SP-64-8	117
		3/4	SP-64-12	117
		1	SP-64-12	120
		1-3/8	SP-64-22	123

METRIC SERRATA PRESS - TYPE SPM				
Finish ground O.D.				
A I.D. RANGE NOMINAL	B O.D. TOLERANCE NOMINAL ACTUAL	C	ANSI SYMBOL	PRICE CODE
1.00 1.80	5 5.000 - 4.995	6	SPM - 5-6	210
		9	SPM - 5-9	230
1.81 2.60	5 5.000 - 4.995	6	SPM - 5-6	134
		9	SPM - 5-9	144
2.61 3.30	6 6.000 5.995	8	SPM - 6-8	124
		12	SPM - 6-12	134
		16	SPM - 6-16	137
3.31 4.00	7 7.000 6.995	8	SPM - 7-8	114
		12	SPM - 7-12	118
		16	SPM - 7-16	123
4.01 5.00	8 8.000 7.994	8	SPM - 8-8	114
		12	SPM - 8-12	118
		16	SPM - 8-16	123
5.01 6.00	10 10.000 9.994	10	SPM - 10-10	113
		16	SPM - 10-16	116
		22	SPM - 10-22	123
6.01 8.00	12 12.000 11.992	10	SPM - 12-10	113
		16	SPM - 12-12	116
		22	SPM - 12-22	123
8.01 10.00	15 15.000 14.992	12	SPM - 15-12	111
		20	SPM - 15-20	114
		25	SPM - 15-25	116
10.01 12.00	18 18.000 17.992	12	SPM - 18-12	113
		20	SPM - 18-20	118
		25	SPM - 18-25	124
12.01 15.00	22 22.000 21.991	16	SPM - 22-16	123
		28	SPM - 22-28	124
		36	SPM - 22-36	130
15.01 18.00	26 26.000 25.991	16	SPM - 26-16	123
		28	SPM - 26-28	124
		36	SPM - 26-36	130

\* Counterbored leaving correct drill bearing length and chip clearance.