

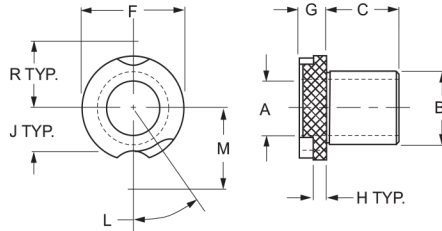
# METRIC SLIP FIXED RENEWABLE - TYPE SFM

When ordering specify:

Example:

Quantity	Bushing Type	I.D.(A)	O.D.(B)	Length(C)
6	SFM	12M	20M	8M

Or: 6 SFM-12-20-8



METRIC SLIP/FIXED HEAD DIMENSIONS						
BODY O.D. B	F	G	H	J	L	R
8mm	15mm	6	3	4.5mm	65°	11.5mm
10	18			6	65°	13
12	22			7.5	60°	16
15	26	8	4	9.5	50°	18
18	30			11.5	50°	20
22	34			13	35°	23.5
26	39	10	5.5	15.5	35°	26
30	46			19	30°	29.5
35	52			22	30°	32.5
42	59			25.5	30°	36
48	66	12	7	28.5	30°	41
55	74			32.5	25°	45
62	82			36.5	25°	49
70	90			40.5	25°	53
78	100			45.5	25°	58
85	110			50.5	20°	63
95	120			55.5	20°	68
105	130	60.5	20°	73		

A I.D. RANGE	B OUTSIDE DIMENSION	C	ANSI SYMBOL	PRICE CODE	LOCK SCREW	ROUND CLAMP
.035 1.00	<b>8</b> 8.000-7.994	10	SFM-8-10	251	LSM-1	RCM-1
		16	SFM-8-16	268		
1.01 1.80	<b>8</b> 8.000-7.994	10	SFM-8-10	242	LSM-1	RCM-1
		16	SFM-8-16	262		
1.81 4.00	<b>8</b> 8.000-7.994	10	SFM-8-10	143	LSM-1	RCM-1
		16	SFM-8-16	169		
4.01 6.00	<b>10</b> 10.000-9.994	12	SFM-10-12	133	LSM-2	RCM-2
		20	SFM-10-20	136		
		25	SFM-10-25	144		
6.01 8.00	<b>12</b> 12.00-11.992	12	SFM-12-12	131	LSM-3 LSM-4	RCM-3 RCM-4
		20	SFM-12-20	136		
		25	SFM-12-25	144		
8.01 10.00	<b>15</b> 15.000-14.992	16	SFM-15-16	136	LSM-3 LSM-4	RCM-3 RCM-4
		28	SFM-15-28	144		
		36	SFM-15-36	161		
10.01 12.00	<b>18</b> 18.000-17.992	16	SFM-18-16	135	LSM-3 LSM-4	RCM-3 RCM-4
		28	SFM-18-28	139		
		36	SFM-18-36	163		
12.01 15.00	<b>22</b> 22.000-21.991	20	SFM-22-20	151	LSM-5 LSM-6	RCM-5 RCM-6
		36	SFM-22-36	166		
		45	SFM-22-45	176		
15.01 18.00	<b>26</b> 26.000-25.991	20	SFM-26-20	151	LSM-5 LSM-6	RCM-5 RCM-6
		36	SFM-26-36	165		
		45	SFM-26-45	176		
18.01 22.00	<b>30</b> 30.000-29.991	25	SFM-30-25	190	LSM-5 LSM-6	RCM-5 RCM-6
		45	SFM-30-45	219		
		56	SFM-30-56	259		
22.01 26.00	<b>35</b> 35.000-24.989	25	SFM-35-25	190	LSM-5 LSM-6	RCM-5 RCM-6
		45	SFM-35-45	219		
		56	SFM-35-56	259		
26.01 30.00	<b>42</b> 42.000-41.989	30	SFM-42-30	221	LSM-5 LSM-6	RCM-5 RCM-6
		56	SFM-42-56	263		
		67	SFM-42-67	356		
30.01 35.00	<b>48</b> 48.000-47.989	30	SFM-48-30	261	LSM-7 LSM-8	RCM-7 RCM-8
		56	SFM-48-56	360		
		67	SFM-48-67	370		

A I.D. RANGE	B OUTSIDE DIMENSION	C	ANSI SYMBOL	PRICE CODE	LOCK SCREW	ROUND CLAMP
35.01 42.00	<b>55</b> 55.000-54.987	30	SFM-55-30	254	LSM-7 LSM-8	RCM-7 RCM-8
		56	SFM-55-56	270		
		67	SFM-55-67	372		
42.01 48.00	<b>62</b> 62.000-61.987	35	SFM-62-35	383	LSM-7 LSM-8	RCM-7 RCM-8
		67	SFM-62-67	417		
		78	SFM-62-78	421		
48.01 55.00	<b>70</b> 70.000-69.987	35	SFM-70-35	411	LSM-7 LSM-8	RCM-7 RCM-8
		67	SFM-70-67	439		
		78	SFM-70-78	444		
55.01 62.00	<b>78</b> 78.000-77.987	40	SFM-78-40	426	LSM-7 LSM-8	RCM-7 RCM-8
		78	SFM-78-78	466		
		105	SFM-78-105	508		
62.01 70.00	<b>85</b> 85.000-84.985	40	SFM-85-40	441	LSM-7 LSM-8	RCM-7 RCM-8
		78	SFM-85-78	492		
		105	SFM-85-105	535		
70.01 78.00	<b>95</b> 95.000-94.985	45	SFM-95-45	458	LSM-7 LSM-8	RCM-7 RCM-8
		89	SFM-95-89	521		
		112	SFM-95-112	557		
78.01 85.00	<b>105</b> 105.000-104.985	45	SFM-105-45	479	LSM-7 LSM-8	RCM-7 RCM-8
		89	SFM-105-89	533		
		112	SFM-105-112	566		

All the above standard sizes are no counterbore.