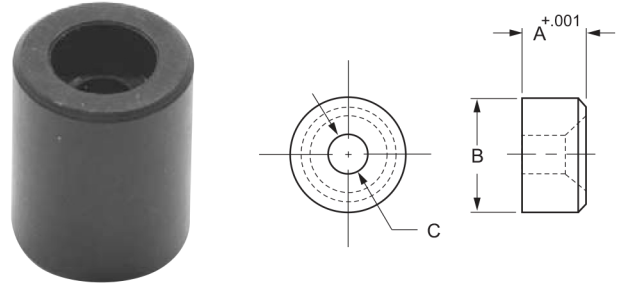
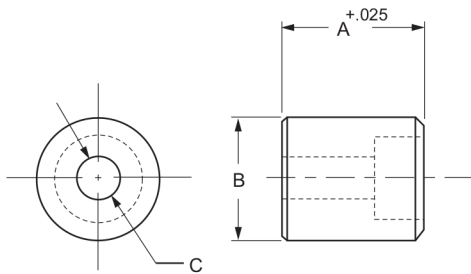


# JIG REST BUTTONS

Jig Rest Buttons have precision ground lengths ("A" dimension); final leveling grind is normally not required. Jig Rest Buttons are counterbored for screw mounting.



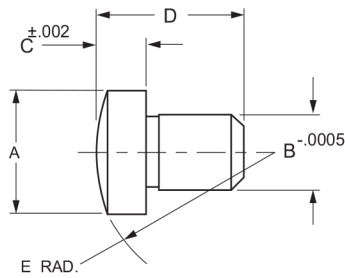
<b>METRIC JIG REST BUTTONS</b>			
Socket Head Cap Screw Size - Case Hardened - Black Oxide Finish			
P/N	DIMENSIONS		
	A	B	C
<b>399-70</b>	10mm .3937	16mm .63	M5
<b>399-72</b>	15mm .5906	16mm .63	M5
<b>399-74</b>	10mm .3937	.20mm .79	M6
<b>399-76</b>	15mm .5906	20mm .79	M6
<b>399-78</b>	20mm .7874	20mm .79	M6
<b>399-79</b>	25mm .9643	20mm .79	M6
<b>399-80</b>	15mm .5906	25mm .98	M8
<b>399-82</b>	20mm .7874	25mm .98	M8
<b>399-84</b>	25mm .9843	25mm .98	M8
<b>399-86</b>	20mm .7874	32mm 1.26	M10
<b>399-88</b>	25mm .9843	32mm 1.26	M10
<b>399-90</b>	30mm 1.1811	32mm 1.26	M10
<b>399-92</b>	50mm 1.9685	32mm 1.26	M10

<b>JIG REST BUTTONS</b>			
Case Hardened - Black Oxide Finish			
P/N	DIMENSIONS		
	A	B	C
<b>400-02</b>	.250	7/16	#6 FHS
<b>400-04</b>	.375	7/16	#6 FHS
<b>400-06</b>	.500	1/2	#6 FHS
<b>400-08</b>	.125	1/2	#8 FHS
<b>400-10</b>	.375	1/2	#10 SHS
<b>400-12</b>	.500	1/2	#10 SHS
<b>400-14</b>	.250	5/8	#10 FHS
<b>400-16</b>	.375	5/8	1/4 SHS
<b>400-18</b>	.500	5/8	1/4 SHS
<b>400-20</b>	.625	5/8	1/4 SHS
<b>400-22</b>	.750	5/8	1/4 SHS
<b>400-24</b>	.875	5/8	1/4 SHS
<b>400-26</b>	1.000	5/8	1/4 SHS
<b>400-28</b>	.375	7/8	1/4 FHS
<b>400-30</b>	.500	7/8	5/16 SHS
<b>400-32</b>	.625	7/8	5/16 SHS
<b>400-34</b>	.750	7/8	5/16 SHS
<b>400-36</b>	.875	7/8	5/16 SHS
<b>400-38</b>	1.000	7/8	5/16 SHS
<b>400-40</b>	1.125	7/8	5/16 SHS
<b>400-42</b>	.375	1-1/4	5/16 FHS
<b>400-44</b>	.500	1-1/4	3/8 SHS
<b>400-46</b>	.750	1-1/4	3/8 SHS
<b>400-48</b>	.875	1-1/4	3/8 SHS
<b>400-50</b>	1.000	1-1/4	3/8 SHS
<b>400-52</b>	1.500	1-1/4	3/8 SHS
<b>400-54</b>	2.000	1-1/4	3/8 SHS
<b>400-56</b>	.375	1-5/8	3/8 FHS
<b>400-58</b>	1.250	1-5/8	1/2 SHS
<b>400-60</b>	1.750	1-5/8	1/2 SHS
<b>400-62</b>	2.250	1-5/8	1/2 SHS

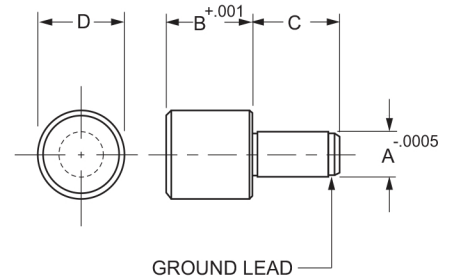
FHS = Flat Head Screw

SHS = Socket Head Screw

# SPHERICAL LOCATOR & ROUND REST BUTTONS

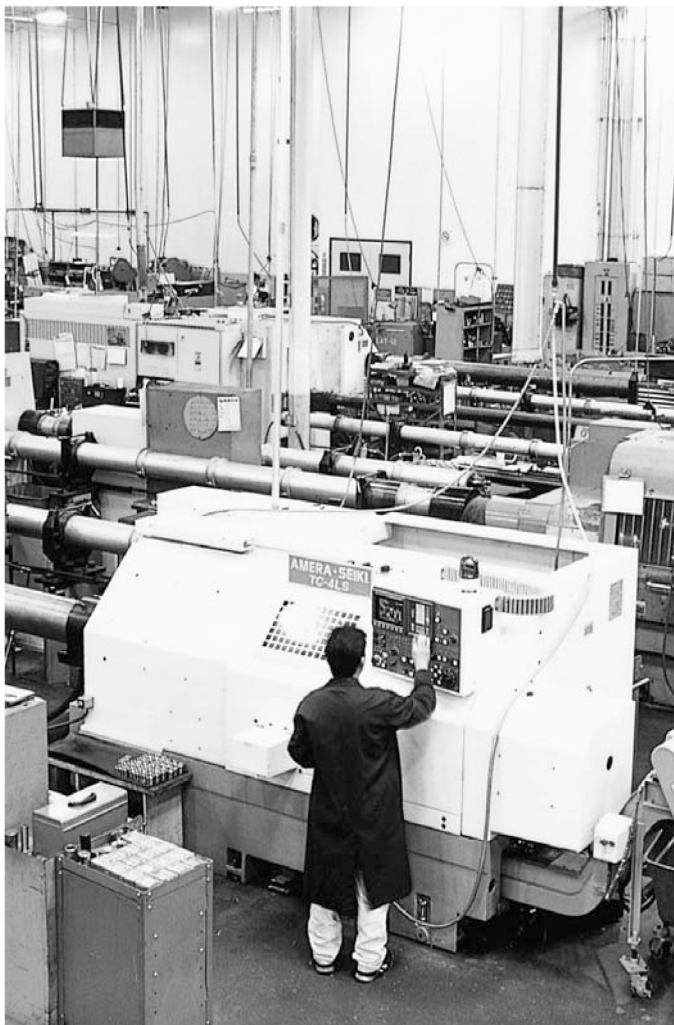


Round Rest Buttons are intended for press fit installation. Head thickness ("B" dimension) is precision ground; final leveling grind is normally not required.



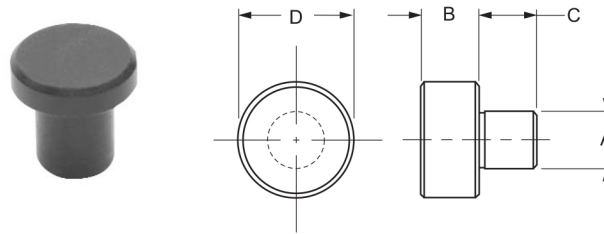
<b>SPHERICAL LOCATOR BUTTONS</b>					
Case Hardened - Black Oxide Finish					
P/N	DIMENSIONS				
	A	B	C	D	E
400-70	5/16	.1890	1/8	3/8	1/2
400-75	3/8	.2515	3/16	1/2	5/8
400-80	1/2	.3765	3/16	9/16	3/4
400-85	1/2	.3765	1/4	5/8	3/4
400-90	1/2	.3765	3/8	3/4	3/4
400-95	1/2	.3765	1/2	7/8	3/4

<b>ROUND REST BUTTONS</b>				
Press Fit - Head Thickness Finish Ground - Case Hardened - Black Oxide Finish				
P/N	DIMENSIONS			
	A	B	C	D
401-02	.1885	.250	3/8	3/8
401-04	.1885	.375	3/8	3/8
401-06	.1885	.500	3/8	3/8
401-08	.2510	.250	1/2	1/2
401-10	.2510	.375	1/2	1/2
401-12	.2510	.500	1/2	1/2
401-14	.3135	.250	1/2	9/16
401-16	.3135	.375	1/2	9/16
401-18	.3135	.500	1/2	9/16
401-20	.3760	.250	5/8	5/8
401-22	.3760	.375	5/8	5/8
401-24	.3760	.500	5/8	5/8
401-26	.3760	.625	5/8	5/8
401-28	.3760	.750	5/8	5/8
401-30	.3760	.375	5/8	7/8
401-32	.5010	.500	5/8	7/8
401-34	.5010	.625	5/8	7/8
401-36	.5010	.750	5/8	7/8
401-38	.6260	.375	3/4	1
401-40	.6260	.500	3/4	1
401-42	.6260	.625	3/4	1
401-44	.6260	.750	3/4	1
401-46	.7515	.500	7/8	1-1/4
401-48	.7515	.625	7/8	1-1/4



# REST PADS

Round rest buttons are intended for press fit installation. Head thickness ("B" dimension) is .005 to .015 inch oversize to allow for finish grinding to required size.

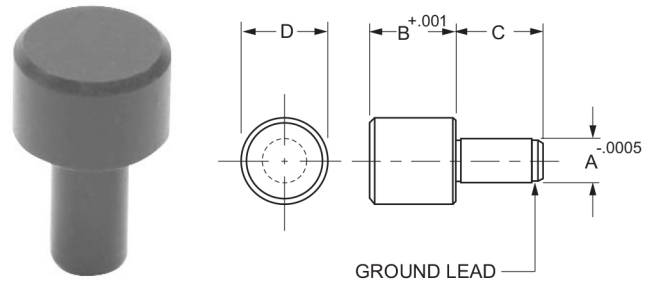
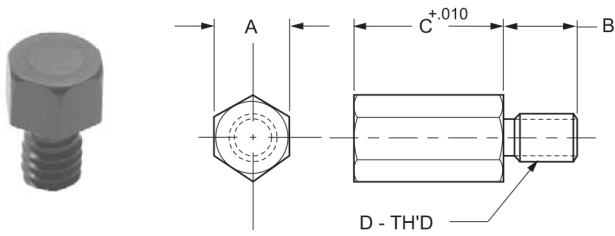


<b>ROUND REST BUTTONS</b>				
Press Fit - Head Thickness Oversize Case Hardened -Black Oxide Finish				
P/N	DIMENSIONS			
	A	B	C	D
402-00	.3135 / .3130	.130 / .140	3/8	1/2
402-05	.3760 / .3755	.505 / .515	3/8	1/2
402-10	.3760 / .3755	.505 / .515	3/8	3/4
402-15	.5010 / .5005	.505 / .515	1/2	1
402-20	.5010 / .5005	.505 / .515	1/2	1-1/4
402-25	.6265 / .6260	.505 / .515	5/8	1-1/2
402-30	.2520 / .2510	.130 / .140	3/8	3/8
402-35	.2520 / .2510	.255 / .265	3/8	3/8
402-40	.2520 / .2510	.130 / .140	3/8	1/2
402-45	.2520 / .2510	.255 / .265	3/8	1/2
402-50	.3770 / .3760	.505 / .515	1/2	1/2
402-55	.3770 / .3760	.755 / .765	1/2	1/2
402-60	.3770 / .3760	1.005 / 1.015	3/4	1/2
402-65	.3770 / .3760	.130 / .140	3/8	5/8
402-70	.3770 / .3760	.255 / .265	1/2	5/8
402-75	.5020 / .5010	.505 / .515	5/8	5/8
402-80	.5020 / .5010	.755 / .765	3/4	5/8
402-85	.5020 / .5010	1.005 / 1.015	1	5/8

# ROUND REST BUTTONS

All dimensions conform to national jig and fixture component standards.

Round Rest Buttons are intended for press fit installation. Head thickness ("B" dimension) is precision ground; final leveling grind is normally not required.



<b>SCREW REST BUTTONS</b>				
Case Hardened - Black Oxide Finish				
P/N	DIMENSIONS			
	A	B	C	D
401-49	3/8	3/8	1/4	1/4-20
401-50	3/8	3/8	3/8	1/4-20
401-51	3/8	3/8	1/2	1/4-20
401-52	3/8	3/8	3/4	1/4-20
401-53	3/8	3/8	1	1/4-20
401-54	1/2	1/2	1/4	3/8-16
401-55	1/2	1/2	3/8	3/8-16
401-56	1/2	1/2	1/2	3/8-16
401-57	1/2	1/2	3/4	3/8-16
401-58	1/2	1/2	1	3/8-16
401-59	5/8	5/8	1/4	1/2-13
401-60	5/8	5/8	3/8	1/2-13
401-61	5/8	5/8	1/2	1/2-13
401-62	5/8	5/8	5/8	1/2-13
401-63	5/8	5/8	3/4	1/2-13
401-64	5/8	5/8	1	1/2-13

<b>METRIC ROUND REST BUTTONS</b>				
Press Fit - Case Hardened - Black Oxide Finish				
P/N	DIMENSIONS			
	A	B	C	D
401-74	6	5	8	10
401-76	6	10	8	10
401-78	6	13	13	12
401-79	8	7	16	16
401-80	8	10	10	16
401-82	8	13	16	16
401-83	8	15	10	16
401-85	10	10	12	20
401-86	12	10	16	24
401-87	12	13	16	24
401-88	12	16	16	24
401-89	16	10	20	30
401-90	16	13	20	30
401-91	16	20	20	30