

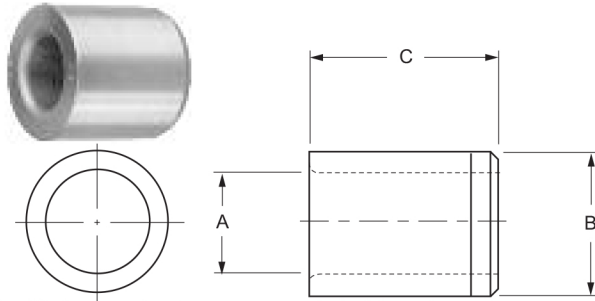
# METRIC PRESS FIT - TYPE PM

When ordering specify:

Example:

Quantity	Bushing Type	I.D.(A)	O.D.(B)	Length(C)
6	PM	6M	10M	16M

Or: 6 PM-10-16-6



NOTE: All bushings over 25mm are not returnable.

A I.D. RANGE	B O.D. TOLERANCE	C	ANSI SYMBOL	PRICE CODE
.035	4	6	PM-4-6	221
1.00	4.027-4.019	9	PM-4-9	230
1.05	4	6	PM-4-6	208
1.80	4.027-4.019	9	PM-4-6	212
1.85	5	6	PM-5-6	126
2.60	5.027-5.019	9	PM-5-9	136
2.65	6	8	PM-6-8	126
3.30	6.027-6.019	12	PM-6-12	132
		16	PM-6-16	139
3.31	7	8	PM-7-8	116
4.00	7.032-7.023	12	PM-7-12	121
		16	PM-7-16	126
4.01	8	8	PM-8-8	116
5.00	8.032-8.023	12	PM-8-12	121
		16	PM-8-16	126
5.01	10	10	PM-10-10	113
6.00	10.032-10.023	16	PM-10-16	114
		20	PM-10-20	118
6.01	12	10	PM-12-10	113
8.00	12.039-12.028	16	PM-12-16	114
		20	PM-12-20	118
8.01	15	12	PM-15-12	112
10.00	15.039-15.028	20	PM-15-20	114
		25	PM-15-25	116
10.01	18	12	PM-18-12	114
12.00	18.039-18.028	20	PM-18-20	116
		25	PM-18-25	121
12.01	22	16	PM-22-16	125
15.00	22.048-22.035	28	PM-22-28	127
		36	PM-22-36	136
15.01	26	16	PM-26-16	125
18.00	26.048-26.035	28	PM-26-28	128
		36	PM-26-36	139
18.01	30	20	PM-30-20	125
22.00	30.048-30.035	36	PM-30-36	139
		45	PM-30-45	145
22.01	35	20	PM-35-20	140
26.00	35.059-35.043	36	PM-35-36	166
		45	PM-35-45	174

A I.D. RANGE	B O.D. TOLERANCE	C	ANSI SYMBOL	PRICE CODE
26.01	42	25	PM-42-25	159
30.00	42.059-42.043	45	PM-42-45	182
		56	PM-42-56	207
30.01	48	25	PM-48-25	159
35.00	42.059-42.043	45	PM-48-45	182
		56	PM-48-56	207
35.01	55	30	PM-55-30	192
42.00	55.072-55.053	56	PM-55-56	234
		67	PM-55-67	263
42.01	62	30	PM-62-30	244
48.00	62.072-62.053	56	PM-62-56	266
		67	PM-62-67	271
48.01	70	30	PM-70-30	263
55.00	70.078-70.059	56	PM-70-56	271
		67	PM-70-67	374
55.01	78	35	PM-78-35	357
63.00	78.078-78.059	67	PM-78-67	390
		78	PM-78-78	399
63.01	85	35	PM-85-35	385
70.00	85.093-85.071	67	PM-85-67	409
		78	PM-85-78	413
70.01	95	40	PM-95-40	398
78.00	95.093-95.071	78	PM-95-78	433
		105	PM-95-105	474
78.01	105	40	PM-105-40	405
85.00	105.101-105.079	78	PM-105-78	442
		105	PM-105-105	484
85.01	115	45	PM-115-45	421
95.00	115.101-115.079	89	PM-115-89	471
		112	PM-115-112	507
96.01	125	45	PM-125-45	443
105.00	125.117-125.092	89	PM-125-89	445
		112	PM-125-112	535

All the above standard sizes are no counterbore. See back cover for standard metric drill chart.

