

Slotted Locator Bushings for hard tooling. Use with "L" or "T" pins. Refer to the master round press fit bushing section of our main catalog for a complete selection, used with the locator bushings.

FEATURES & BENEFITS

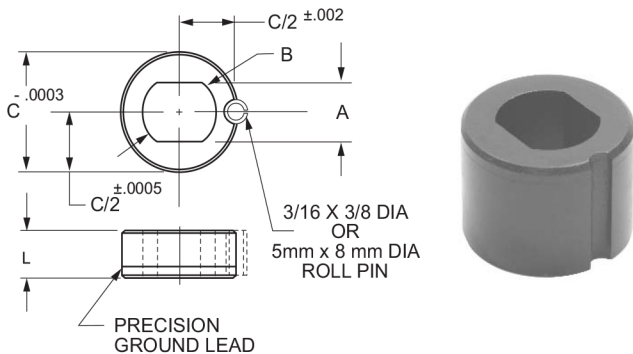
- Cuts tool fabrication costs.
- Reduces loading & unloading time.
- Limits binding, pin breakage and shearing of holes due to slight misalignment.
- Perfect for use on high production tooling.

INSTALLATION

- Drill and ream a 3/16 hole, 5mm for metric sizes, for the roll pin.
- Bore mounting hole to provide minimum diametral interference, 0.0003 to 0.0005 inch, .0076 to .0127 mm, is generally adequate.
- Press slotted locator bushing and roll pin together until flush with top of plate. The roll pin sets a precise alignment between slotted hole and layout axis.

MATERIAL

Slotted Locator Bushings are available in steel, stainless steel (303, 316, 420, 440, 17-4PH) and carbide. For ordering purposes, add "C" for carbide or 303SS, 316SS, 420SS, 440SS or 17-4PH for stainless steel on the end of the part number. Example - **178-25-303SS**.



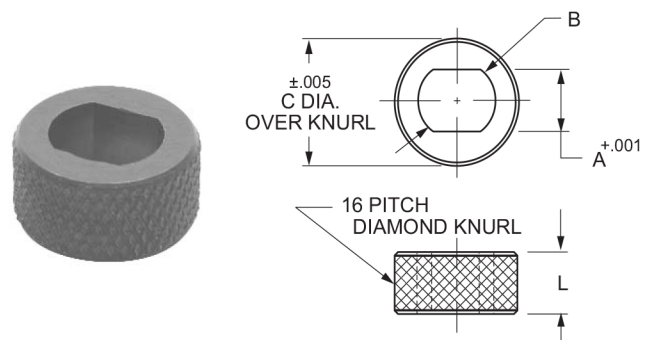
PRESS FIT SLOTTED LOCATOR BUSHINGS				
Case Hardened and Ground - Black Oxide Finish				
P/N	DIMENSIONS			
	A	B	C	L
178-00	.1876 / .1882	.312	.7504	.400
178-05	.2501 / .2507	.375	.7504	.400
178-10	.2501 / .2507	.375	1.0004	.400
178-15	.3126 / .3132	.437	1.0004	.400
178-20	.3751 / .3757	.500	1.0004	.400
178-25	.5001 / .5007	.625	1.0004	.400
178-30	.5001 / .5007	.625	1.0004	.900
178-35	.6251 / .6257	.750	1.2504	.900
178-40	.7501 / .7510	.812	1.5004	1.000
178-45	.8751 / .8760	1.000	1.5004	1.000
178-50	1.0001 / 1.0010	1.062	1.5004	1.000

METRIC PRESS FIT SLOTTED LOCATOR BUSHINGS				
P/N	DIMENSIONS			
	A	B	C	L
179-50	6.00/6.03mm .2363/.2373	9mm .354	20mm .7874	9mm .354
179-55	8.00/8.03mm .3151/.3161	11mm .433	24mm .9449	9mm .354
179-60	10.0/10.30mm .3938-.3948	13mm .512	24mm .9449	9mm .354
179-65	12.0/12.30mm .4725-.4735	15mm .591	24mm .9449	14mm .551
179-70	16.00/16.30mm .6300/.6310	18mm .709	30mm 1.1811	12mm .472
179-75	20.00/20.30mm .7875/.7885	22mm .866	36mm 1.4173	19mm .748
179-80	25.00/25.30mm .9844-.9854	27mm 1.063	40mm 1.5748	19mm .748

The Knurled Locator Bushing for use with many soft tooling.

MATERIAL

Knurled Locator Bushings are available in steel and stainless steel (303, 316, 420, 440, 17-4PH.) For ordering purposes add 303SS, 316SS, 420SS, 440SS or 17-4PH for stainless steel on the end of the part number. Example - **179-20-303SS**.



DIAMOND KNURLED LOCATOR BUSHINGS				
Case Hardened and Ground - Black Oxide Finish				
P/N	DIMENSIONS			
	A	B	C	L
179-00	.1876	.375	.565	.500
179-05	.2501	.375	.640	.500
179-10	.3126	.437	.765	.500
179-15	.3751	.500	.890	.500
179-20	.5001	.625	1.015	.500
179-25	.5001	.625	1.015	1.000