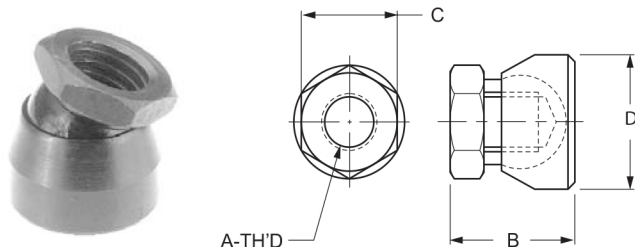
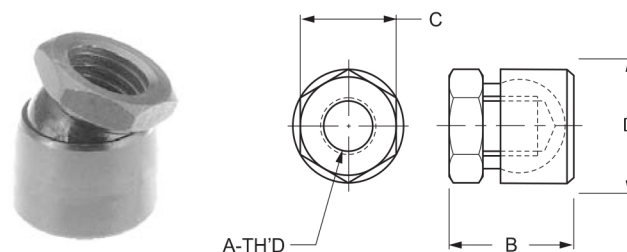


TOGGLE PADS

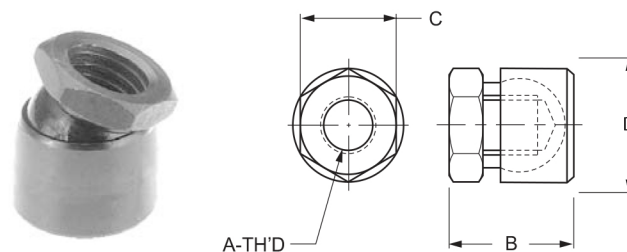
Toggle pads solidly clamp parts with uneven or off angle surfaces and they are self-aligning and self-leveling. They swivel 10° in any direction which allows the pad to automatically seat against the surface of the workpiece when a force is applied, thus eliminating clamp slippage. Clamp force is the same in any direction, regardless of angular position - there is no binding or distortion of the pad. The steel ball is hardened. The bottom of the steel pad is ground to eliminate marring of the workpiece. The aluminum pads are for softer materials and do not mar finishes. Steel pads are also available with relieved shoulders for easier access to the hex flats.



TOGGLE PAD				
Steel pad - Relieved Head - Case Hardened - Black Oxide Finish				
P/N	DIMENSIONS			
	A	B	C	D
150-00R	1/2-20	5/8	1/2	9/16
150-05R	5/16-18	11/16	9/16	11/16
150-10R	3/8-16	3/4	5/8	3/4
150-15R	1/2-13	15/16	3/4	7/8
150-20R	5/8-11	1	7/8	1
150-25R	3/4-10	1-1/4	1-1/16	1-1/4
150-30R	1/8	1-13/16	1-5/16	1-1/2



TOGGLE PAD				
Steel pad - Standard Head - Case Hardened - Black Oxide Finish				
P/N	DIMENSIONS			
	A	B	C	D
150-00	1/4-20	5/8	1/2	9/16
150-05	5/16-18	11/16	9/16	11/16
150-10	3/8-16	3/4	5/8	3/4
150-15	1/2-13	15/16	3/4	7/8
150-20	5/8-11	1	7/8	1
150-25	3/4-10	1-1/4	1-1/16	1-1/4
150-30	1/8	1-13/16	1-5/16	1-1/2

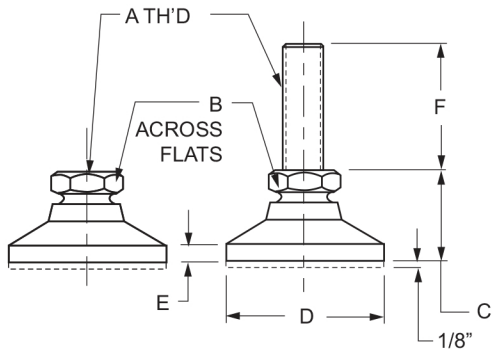
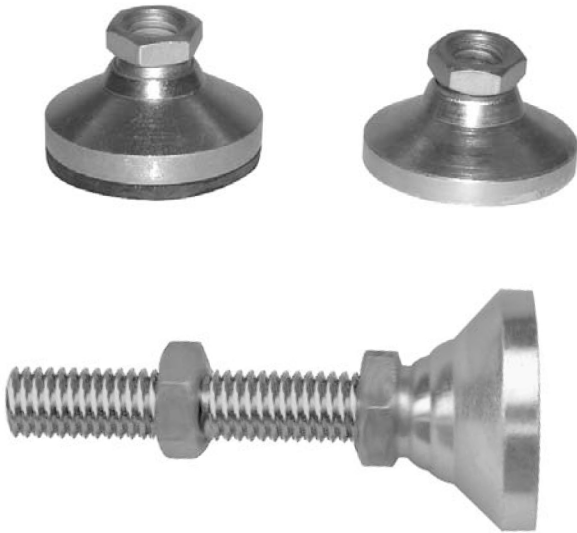


TOGGLE PAD				
Aluminum pad - Standard Head - Case Hardened - Black Oxide Finish				
P/N	DIMENSIONS			
	A	B	C	D
151-00	1/4-20	5/8	1/2	9/16
151-05	5/16-18	11/16	9/16	11/16
151-10	3/8-16	3/4	5/8	3/4
151-15	1/2-13	15/16	3/4	7/8
151-20	5/8-11	1	7/8	1
151-25	3/4-10	1-1/4	1-1/16	1-1/4
151-30	1/8	1-13/16	1-5/16	1-1/2

LEVELING PADS

These leveling pads swivel 15° to each side of the centerline for uneven surfaces. They are ideal for leveling machines, work benches and equipment. They come in socket and stud type with optional elastomer pads that add friction and prevent bench-top marring. Specify black oxide or gold iridite finish when ordering.

- Socket type or Stud type
- Optional elastomer pads
- Steel material
- Stainless Steel



LEVELING PADS Socket Type - With or Without Elastomer Pads - Black Oxide Finish							
P/N		DIMENSIONS					
WITHOUT PADS	WITH PADS	A	B	C	D	E	F
151-99	152-29	1/4-20	1/2	.70	1	5/32	1-1/4
152-00	152-30	3/8-16	5/8	7/8	1-1/4	3/16	2
152-05	152-35	1/2-13	3/4	1-1/8	1-7/8	1/4	2
152-10	152-40	5/8-11	7/8	1-1/4	2-1/2	5/16	2
152-15	152-45	3/4-10	1-1/16	1-1/2	3	1/2	2
152-17	152-47	1-8	1-1/2	1-7/8	4	13/32	4-1/4

STAINLESS STEEL LEVELING PADS Socket Type - With or Without Elastomer Pads							
P/N		DIMENSIONS					
WITHOUT PADS	WITH PADS	A	B	C	D	E	F
151-99S	152-29S	1/4-20	1/2	.70	1	5/32	1-1/4
152-00S	152-30S	3/8-16	5/8	7/8	1-1/4	3/16	2
152-05S	152-35S	1/2-13	3/4	1-1/8	1-7/8	1/4	2
152-10S	152-40S	5/8-11	7/8	1-1/4	2-1/2	5/16	2
152-15S	152-45S	3/4-10	1-1/16	1-1/2	3	1/2	2
152-17S	152-47S	1-8	1-1/2	1-7/8	4	13/32	4-1/4

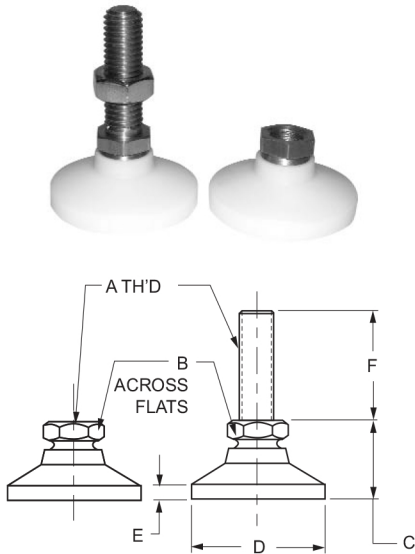
LEVELING PADS Socket Type - With or Without Elastomer Pads - Gold Iridite Finish							
P/N		DIMENSIONS					
WITHOUT PADS	WITH PADS	A	B	C	D	E	F
151-99G	152-29G	1/4-20	1/2	.70	1	5/32	1-1/4
152-00G	152-30G	3/8-16	5/8	7/8	1-1/4	3/16	2
152-05G	152-35G	1/2-13	3/4	1-1/8	1-7/8	1/4	2
152-10G	152-40G	5/8-11	7/8	1-1/4	2-1/2	5/16	2
152-15G	152-45G	3/4-10	1-1/16	1-1/2	3	1/2	2
152-17G	152-47G	1-8	1-1/2	1-7/8	4	13/32	4-1/4

LEVELING PADS Stud Type - With or Without Elastomer Pads - Black Oxide Finish							
P/N		DIMENSIONS					
WITHOUT PADS	WITH PADS	A	B	C	D	E	F
152-49	152-79	1/4-20	1/2	.70	1	5/32	1-1/4
152-50	152-80	3/8-16	5/8	7/8	1-1/4	3/16	2
152-55	152-85	1/2-13	3/4	1-1/8	1-7/8	1/4	2
152-60	152-90	5/8-11	7/8	1-1/4	2-1/2	5/16	2
152-65	152-95	3/4-10	1-1/16	1-1/2	3	1/2	2
152-67	152-97	1-8	1-1/2	1-7/8	4	13/32	4-1/4

STAINLESS STEEL LEVELING PADS Stud Type - With or Without Elastomer Pads							
P/N		DIMENSIONS					
WITHOUT PADS	WITH PADS	A	B	C	D	E	F
152-49S	152-79S	1/4-20	1/2	.70	1	5/32	1-1/4
152-50S	152-80S	3/8-16	5/8	7/8	1-1/4	3/16	2
152-55S	152-85S	1/2-13	3/4	1-1/8	1-7/8	1/4	2
152-60S	152-90S	5/8-11	7/8	1-1/4	2-1/2	5/16	2
152-65S	152-95S	3/4-10	1-1/16	1-1/2	3	1/2	2
152-67S	152-97S	1-8	1-1/2	1-7/8	4	13/32	4-1/4

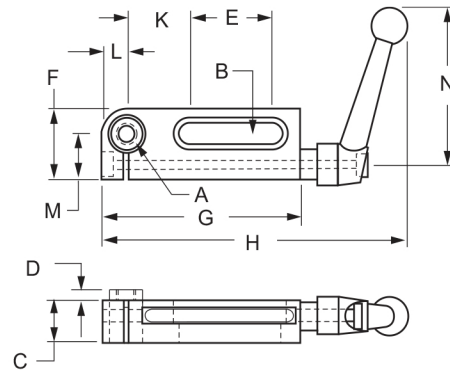
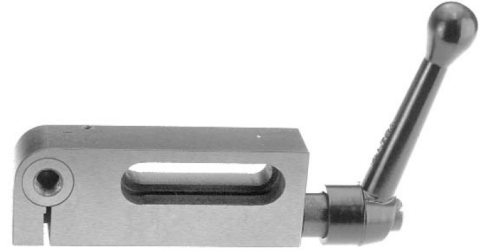
SURE LEVELING PADS

LEVELING PADS							
Stud Type - With or Without Elastomer Pads - Gold Iridite Finish							
P/N		DIMENSIONS					
WITHOUT PADS	WITH PADS	A	B	C	D	E	F
152-49G	152-79G	1/4-20	1/2	.70	1	5/32	1-1/4
152-50G	152-80G	3/8-16	5/8	7/8	1-1/4	3/16	2
152-55G	152-85G	1/2-13	3/4	1-1/8	1-7/8	1/4	2
152-60G	152-90G	5/8-11	7/8	1-1/4	2-1/2	5/16	2
152-65G	152-95G	3/4-10	1-1/16	1-1/2	3	1/2	2
152-67G	152-97G	1-8	1-1/2	1-7/8	4	13/32	4-1/4



The Bedding Support is for use in Milling, Drilling, Planing and Grinding.

INSTALLATION: Press down the support pin and tighten the adjustable handle to keep the pin down while positioning it under the workpiece, then release the spring pin and re-tighten the handle to support the work piece. If more height is needed, a threaded stud can be screwed into the pin.



LEVELING PADS						
Socket Type - Zinc Plated Steel - Delrin Pad						
P/N	DIMENSIONS					
	A	B	C	D	E	F
153-00	1/4-20	1/2	.70	1	5/32	1-1/4
153-02	3/8-16	5/8	7/8	1-1/4	3/16	2
153-04	1/2-13	3/4	1-1/8	1-7/8	1/4	2
153-06	5/8-11	7/8	1-1/4	2-1/2	5/16	2
153-08	3/4-10	1-1/16	1-1/2	3	1/2	2
153-10	1-8	1-1/2	1-7/8	4	13/32	4-1/4

LEVELING PADS						
Stud Type - Zinc Plated Steel - Delrin Pad						
P/N	DIMENSIONS					
	A	B	C	D	E	F
153-01	1/4-20	1/2	.70	1	5/32	1-1/4
153-03	3/8-16	5/8	7/8	1-1/4	3/16	2
153-05	1/2-13	3/4	1-1/8	1-7/8	1/4	2
153-07	5/8-11	7/8	1-1/4	2-1/2	5/16	2
153-09	3/4-10	1-1/16	1-1/2	3	1/2	2
153-11	1-8	1-1/2	1-7/8	4	13/32	4-1/4

BEDDING SUPPORT						
Black Oxide Finish						
P/N	DIMENSIONS					
	A	B	C	D	E	F
158-76	5/16-18	.33	.71	.11	1-13/32	1-3/16
158-78	1/2-13	.53	.95	.23	3-9/16	2
158-80	5/8-11	.67	1.34	.43	4-1/16	2-3/8
P/N	G	H	K	L	M	N
158-76	3-3/8	5-3/16	1-1/16	13/32	25/32	2-9/16
158-78	6-1/2	8-13/16	1-17/32	19/32	1	3-1/8
158-80	7-1/2	10-5/8	1-3/4	13/16	1-9/16	4-5/16