

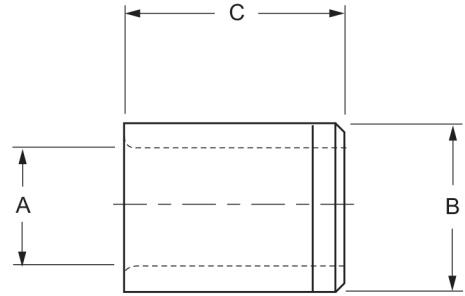
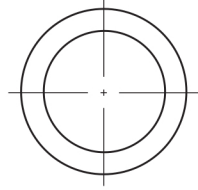
METRIC LINER - TYPE LM

When ordering specify:

Example:

Quantity	Bushing Type	I.D.(A)	O.D.(B)	Length(C)
6	LM	15	22	16

Or: 6 L-22-16-15



A I.D. RANGE	B OUTSIDE DIMENSION	C	ANSI SYMBOL	PRICE CODE
8 8.005-8.014	12 12.039-12.028	10	LM-12-10-8	113
		16	LM-12-16-8	114
10 10.005-10.014	15 15.039-15.028	12	LM-15-12-10	112
		20	LM-15-20-10	114
		25	LM-15-25-10	116
12 12.006-12.017	18 18.039-18.028	12	LM-18-12-12	114
		20	LM-18-20-12	116
		25	LM-18-25-12	121
15 15.006-15.017	22 22.048-22.035	16	LM-22-16-15	125
		28	LM-22-28-15	127
		36	LM-22-36-15	136
18 18.006-18.017	26 26.048-26.035	16	LM-26-16-18	125
		28	LM-26-28-18	128
		36	LM-26-36-18	139
22 22.007-22.020	30 30.048-30.035	20	LM-30-20-22	125
		36	LM-30-36-22	139
		45	LM-30-45-22	145
26 26.007-26.020	35 35.059-35.043	20	LM-35-20-26	140
		36	LM-35-36-26	166
		45	LM-35-45-26	174
30 30.007-30.020	42 42.059-42.043	25	LM-42-25-30	159
		45	LM-42-45-30	182
		56	LM-42-56-30	207
35 35.009-35.025	48 42.059-42.043	25	LM-48-25-35	159
		45	LM-48-45-35	182
		56	LM-48-56-35	207
42 42.009-42.025	55 55.072-55.053	30	LM-55-30-42	192
		56	LM-55-56-42	234
		67	LM-55-67-42	264
48 48.009-48.025	62 62.072-62.053	30	LM-62-30-48	244
		56	LM-62-56-48	266
		67	LM-62-67-48	271
55 55.010-55.029	70 70.078-70.059	30	LM-70-30-55	263
		56	LM-70-56-55	271
		67	LM-70-67-55	273
62 62.010-62.029	78 78.078-78.059	35	LM-78-35-62	357
		67	LM-78-67-62	390
		78	LM-78-78-62	399
70 70.010-70.029	85 85.093-85.071	35	LM-85-35-70	385
		67	LM-85-67-70	409
		78	LM-85-78-70	413

A I.D. RANGE	B OUTSIDE DIMENSION	C	ANSI SYMBOL	PRICE CODE
78 78.010-78.029	95 95.093-95.071	40	LM-95-40-78	398
		78	LM-95-78-78	433
		105	LM-95-105-78	474
85 85.010-85.029	105 105.101-105.079	40	LM-105-40-85	405
		78	LM-105-78-85	442
		105	LM-105-105-85	484
95 95.010-95.029	115 115.101-115.079	45	LM-115-45-95	421
		89	LM-115-89-95	471
		112	LM-115-112-95	507
105 105.010-105.029	125 125.117-125.092	45	LM-125-45-112	443
		89	LM-125-89-112	445
		112	LM-125-112-112	535