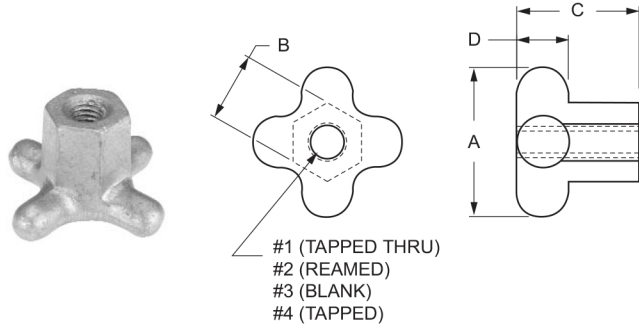


KNOBS

Use these Hand Knobs as a hand knob or a clamping knob. Blank Hand Knobs includes a cast center, eliminating center drilling.

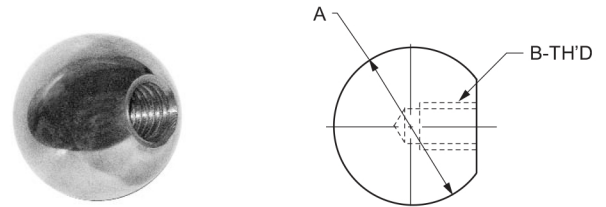
NOTE: Discontinued, available while supplies last.



#1 (TAPPED THRU)
#2 (REAMED)
#3 (BLANK)
#4 (TAPPED)

Hand Knobs Cast Aluminum								
P/N	DIMENSIONS				THREAD			
	A	B	C	D	#1	#2	#3	#4
351-02	1-1/8	1/2	3/4	3/8	1/4-20	-	-	-
*351-04	1-1/8	9/16	3/4	3/8	-	.2500	-	-
351-06	1-1/8	1/2	3/4	3/8	-	-	-	-
351-08	1-1/8	1/2	3/4	3/8	-	-	-	1/4-20
351-10	1-1/2	19/32	7/8	3/8	5/16-18	-	-	-
*351-12	1-1/2	19/32	7/8	3/8	-	.3115	-	-
351-14	1-1/2	19/32	7/8	3/8	-	-	-	-
351-16	1-1/2	19/32	7/8	3/8	-	-	-	5/16-18
351-18	2	11/16	1	3/8	3/8-16	-	-	-
*351-20	2	1-1/8	1	1/2	-	.3740	-	-
351-22	2	11/16	1	3/8	-	-	-	-
351-24	2	11/16	1	3/8	-	-	-	3/8-16
351-26	2-1/2	1-1/16	1-1/2	1/2	1/2-13	-	-	-
*351-28	2-1/2	1-1/8	1-1/2	1/2	-	.4990	-	-
351-30	2-1/2	1-1/16	1-1/2	1/2	-	-	-	-
351-32	2-1/2	1-1/16	1-1/2	1/2	-	-	-	1/2-13
351-38	2-1/2	1-1/16	1-1/2	1/2	-	-	-	-
351-40	2-1/2	1-1/16	1-1/2	1/2	-	-	-	5/8-11
351-42	3	1-1/4	1-3/4	5/8	3/4-10	-	-	-
*351-44	3	1-1/4	1-3/4	1/2	-	.7490	-	-
351-46	3	1-1/4	1-3/4	5/8	-	-	-	-
351-48	3	1-1/4	1-3/4	5/8	-	-	-	3/4-10

- These highly polished balls are turned from solid bar stock.
- The Brass balls offer excellent corrosion resistance to water.
- The Steel and Brass Ball Knobs are used in fixtures, machine tools, jigs and assemblies

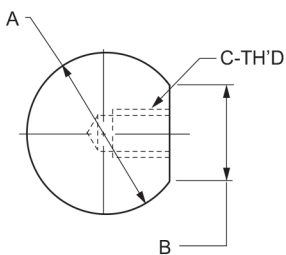


BALL KNOBS Steel					
P/N	DIMENSIONS				
	A	B	P/N	A	B
351-50	3/4	10-24	351-68	1-3/8	1/4-20
351-52	3/4	10-32	351-70	1-3/8	1/4-28
351-54	1	10-24	351-72	1-3/8	5/16-18
351-56	1	10-32	351-74	1-3/8	5/16-24
351-58	1	1/4-20	351-76	1-3/8	3/8-16
351-60	1	1/4-28	351-78	1-3/8	3/8-24
351-62	1	5/16-18	351-80	1-3/8	7/16-20
351-64	1	5/16-24	351-82	1-3/8	1/2-13
351-66	1	3/8-16	351-84	1-3/8	1/2-20

BALL KNOBS Brass					
P/N	DIMENSIONS				
	A	B	P/N	A	B
*351-51	3/4	#10-24	*351-69	1-3/8	1/4-20
*351-53	3/4	#10-32	*351-71	1-3/8	1/4-28
*351-55	1	#10-24	*351-73	1-3/8	5/16-18
*351-57	1	#10-32	*351-75	1-3/8	5/16-24
*351-59	1	1/4-20	*351-77	1-3/8	3/8-16
*351-61	1	1/4-28	*351-79	1-3/8	3/8-24
*351-63	1	5/16-18	*351-81	1-3/8	7/16-20
*351-65	1	5/16-24	*351-83	1-3/8	1/2-13
*351-67	1	3/8-16	*351-85	1-3/8	1/2-20

KNOBS

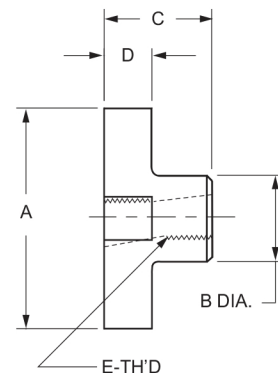
These classic Ball Knobs are made of plastic, which has a smooth bright finish.



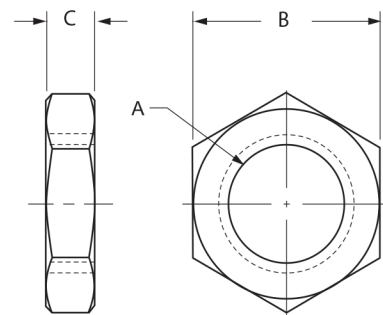
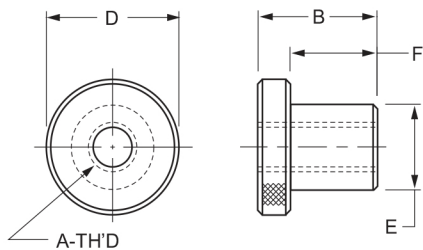
PLASTIC BALL KNOBS				
Molded Brass Inserts				
P/N	DIMENSIONS			
	A	B	C	THREAD LENGTH
352-05	3/4	3/8	10-24	5/16
352-10	1	1/2	1/4-20	7/16
352-15	1	1/2	1/4-28	7/16
352-20	1	1/2	5/16-18	7/16
352-25	1	1/2	5/16-24	7/16
352-30	1-3/8	5/8	3/8-16	1/2
352-35	1-3/8	5/8	3/8-24	1/2
352-40	1-3/8	5/8	1/2-13	5/8
352-45	1-3/8	5/8	1/2-20	5/8
352-55	1-7/8	3/4	1/2-13	5/8
352-60	1-7/8	3/4	1/2-20	5/8
*352-65	1-7/8	7/8	5/8-18	3/4

* Models molded without metal insert.

These steel knobs are excellent for fast clamping. The oblong hole lets you tilt and slide the knob onto a stud. For Clamping Action, simply straighten the knob, turn clockwise and the threads will engage. To remove, turn counter clockwise, tilt and slide off. These are not suitable for vibrating equipment.



METRIC QUICK ACTING KNOBS					
Black Finish					
P/N	DIMENSIONS				
	A	B	C	D	E
353-60	30	14	16	8	M6 x 1.00
353-62	38	17	22	10	M8 x 1.25
353-64	50	21	25	13	M10 x 1.50
353-66	64	25	30	14	M12 x 1.75
353-68	76	32	32	16	M16 x 2.00

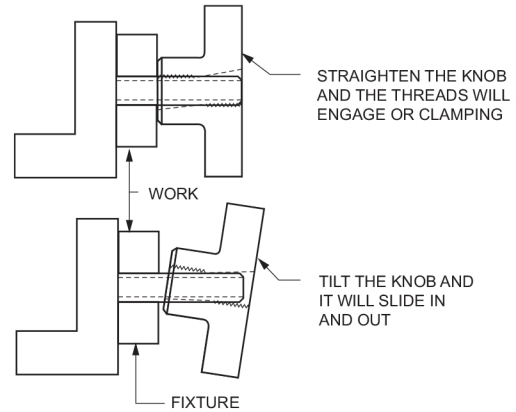
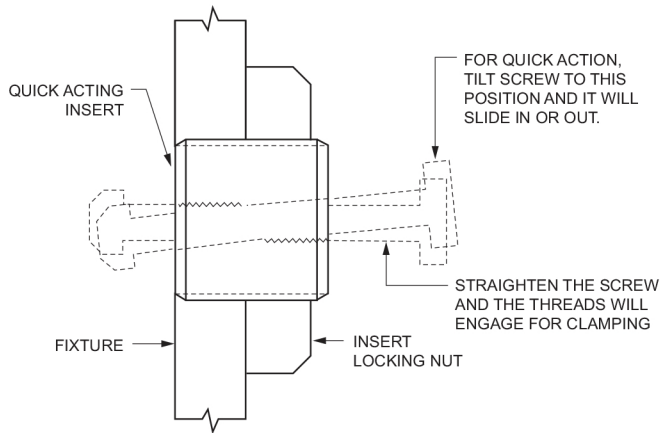
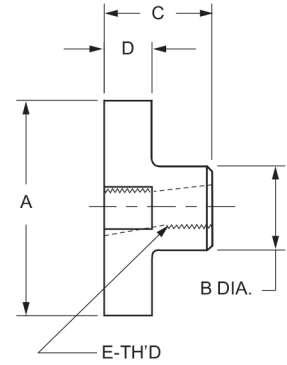
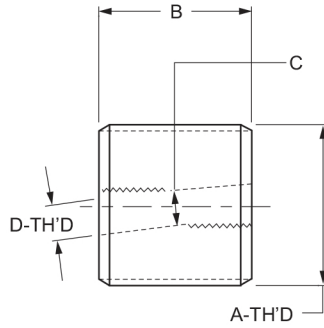


STEEL KNURLED KNOBS					
Black Oxide Finish					
P/N	DIMENSIONS				
	A	B	D	E	F
353-00	10-24	5/8	3/4	1/2	3/8
353-05	1/4-20	3/4	1	5/8	1/2
353-10	3/8-16	1-1/8	1-1/4	3/4	5/8
353-15	1/2-13	1-1/4	1-1/2	1	3/4
353-20	5/8-11	1-3/4	2	1-1/4	1-1/8
353-25	3/4-10	2-1/4	2-1/2	1-1/2	1-5/8

INSERT LOCKING NUTS				
Case Hardened - Black Oxide Finish				
P/N	USE WITH	DIMENSIONS		
		A	B	C
353-70	353-80	1/2-20	3/4	3/16
353-71	353-81	5/8-18	1-1/16	1/4
353-72	353-82	3/4-16	1-1/8	5/16
353-73	353-83	1-14	1-1/2	3/8
353-74	353-84	1-1/4-12	1-3/4	7/16

KNOBS

These steel knobs are excellent for fast clamping. The oblong hole lets you tilt and slide the knob onto a stud. For Clamping Action, simply straighten the knob, turn clockwise and the threads will engage. To remove, tilt and slide off. These are not suitable for vibrating equipment.



QUICK ACTING INSERTS

Case Hardened - Black Oxide Finish

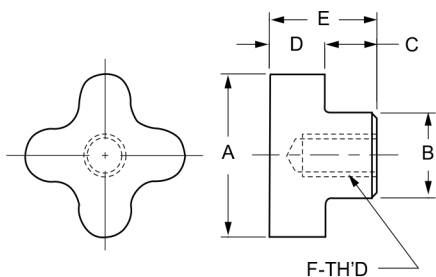
P/N	DIMENSIONS			
	A	B	C	D
353-80	1/2-20	1/2	17/64	1/4-20
353-81	5/8-18	5/8	21/64	5/16-18
353-82	3/4-16	3/4	25/64	3/8-16
353-83	1-14	1	33/64	1/2-13
353-84	1-1/4-12	1-1/4	41/64	5/8-11

QUICK ACTING KNOBS

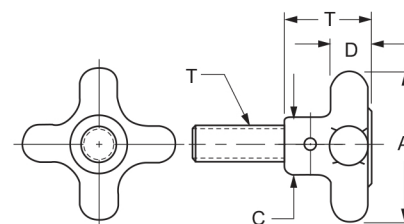
Black Finish

P/N	DIMENSIONS				
	A	B	C	D	E
353-90	1-1/8	9/16	5/8	5/16	1/4-20
353-91	1-1/2	11/16	7/8	3/8	5/16-18
353-92	2	13/16	1	1/2	3/8-16
353-93	2-1/2	1	1-1/8	9/16	1/2-13
353-94	3	1-1/4	1-1/4	5/8	5/8-11
353-95	3	1-1/4	1-1/4	5/8	3/4-10

KNOBS



The Classic Cast Iron knob has a round contoured shape and a very comfortable grip. All the knobs are tumbled smooth and zinc plated for corrosion resistance. The screw is pinned to the knob.



PRONG TYPE HAND KNOBS

Cast Iron

DIMENSIONS

P/N	DIMENSIONS					
	A	B	C	D	E	F
*354-00	1-1/8	9/16	3/8	5/16	5/8	BLANK
354-02	1-1/8	9/16	3/8	3/8	3/4	.250 RM
354-04	1-1/8	9/16	3/8	3/8	3/4	1/4-20 TAP
354-06	1-1/2	5/8	1/2	3/8	7/8	BLANK
354-08	1-1/2	5/8	1/2	3/8	7/8	.3125 RM
354-10	1-1/2	5/8	1/2	3/8	7/8	5/16-18 TAP
354-12	2	3/4	5/8	1/2	1-1/8	BLANK
354-14	2	3/4	5/8	1/2	1-1/8	.3125 RM
354-15	2	3/4	5/8	1/2	1-1/8	.375 RM
354-18	2	3/4	5/8	1/2	1-1/8	3/8-16 TAP
354-28	2-1/2	1-1/8	1	1/2	1-1/2	BLANK
354-30	2-1/2	1-1/8	1	1/2	1-1/2	.499 RM
354-32	2-1/2	1-1/8	1	1/2	1-1/2	.625 RM
354-34	2-1/2	1-1/8	1	1/2	1-1/2	1/2-13 TAP
354-36	2-1/2	1-1/8	1	1/2	1-1/2	5/8-11 TAP
354-38	3	1-1/4	1-1/4	1/2	1-3/4	BLANK
354-40	3	1-1/4	1-1/4	1/2	1-3/4	.625 RM
354-42	3	1-1/4	1-1/4	1/2	1-3/4	.750 RM
354-44	3	1-1/4	1-1/4	1/2	1-3/4	5/8-11 TAP
**354-46	3	1-1/4	1-1/4	5/8	1-3/4	3/4-10 TAP

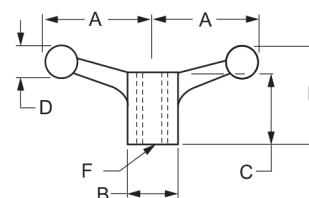
- - Discontinued, available while supplies last
- ** - This item (354-46) is Black Oxide Finished.

CAST IRON KNOBS

Cast Iron, Zinc Plated Knob - Black Oxide Finish Screw

DIMENSIONS

P/N	DIMENSIONS				
	A	B	C	D	T
354-47	2	1-1/8	3/4	1/2	3/8-16 x 1.0
354-48	2	1-1/8	3/4	1/2	3/8-16 x 1.5
354-49	2	1-1/8	3/4	1/2	3/8-16 x 2.0
354-50	2-1/2	1-1/2	1-1/8	1/2	1/2-13 x 1.5
354-51	2-1/2	1-1/2	1-1/8	1/2	1/2-13 x 2.0
354-52	2-1/2	1-1/2	1-1/8	1/2	1/2-13 x 2.5
354-53	2-1/2	1-1/2	1-1/8	1/2	5/8-11 x 2.0
354-54	2-1/2	1-1/2	1-1/8	1/2	5/8-11 x 2.5
354-55	2-1/2	1-1/2	1-1/8	1/2	5/8-11 x 3.0



MACHINE BALL HANDLES

Maleable Cast Iron - Double Arm

DIMENSIONS

P/N	DIMENSIONS					
	A	B	C	D	E	F
354-62	2-7/16	1-1/8	1-5/8	3/4	2-1/4	BLANK
354-64	2-7/16	1-1/8	1-5/8	3/4	2-1/4	.500 RM
354-66	2-3/8	1-3/8	1-5/8	3/4	2-1/4	1/2-13 TAP
354-74	3	1-3/8	1-5/8	7/8	2-1/2	BLANK
354-76	3	1-3/8	1-5/8	7/8	2-1/2	.625 RM
354-78	3	1-3/8	1-5/8	7/8	2-1/2	5/8-11 TAP
354-86	4	1-5/8	1-3/4	1	2-15/16	BLANK
354-88	4	1-5/8	1-3/4	1	2-15/16	.750 RM
354-90	4	1-5/8	1-3/4	1	2-15/16	3/4-10 TAP