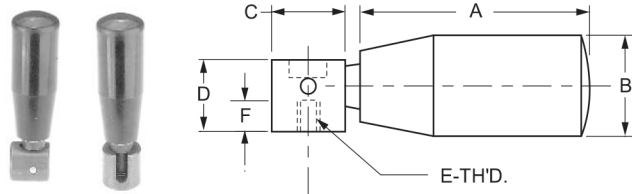
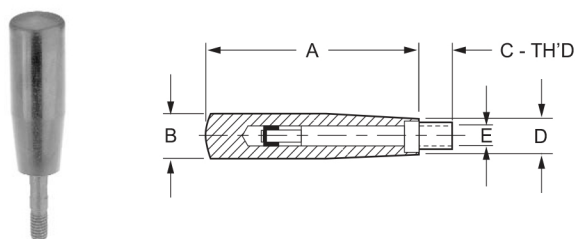


REVOLVING STEEL HANDLE					
Threaded Type - Satin Chrome Plate					
P/N	DIMENSIONS				
	A	B	C	D	E
361-32	2	5/8	1/2	1/4-20	15/32
361-34	2-1/2	3/4	9/16	5/16-18	9/16
361-36	3-1/4	7/8	5/8	3/8-16	5/8
361-38	4	1	3/4	1/2-13	23/32



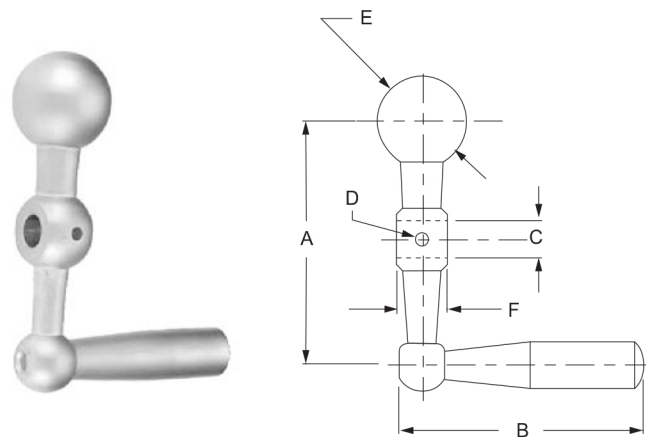
This piece is similar to the Revolving Steel Handle. The handle is made of black Bakelite Plastic. The handle outside diameter is larger than the solid steel handle



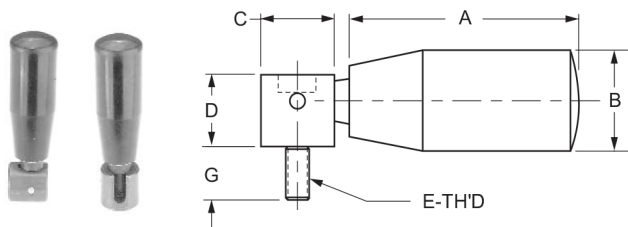
FOLDING HANDLE						
Tapped Type - Black Steel Stem - Bakelite Handle						
P/N	DIMENSIONS					
	A	B	C	D	E	F
361-62	2	7/8	5/8	5/8	10-24	5/32
361-64	2-1/2	15/16	25/32	25/32	1/4-20	5/8
361-66	3-1/8	1	25/32	25/32	5/16-18	3/4

The Single Crank Handle is a balanced steel handle, balanced for better control. The center hole is cross drilled in one wall for easy installation. Hole D in the below illustration in one wall only.

REVOLVING PLASTIC HANDLE					
Threaded Type - Black Steel Screw - Bakelite Handle					
P/N	DIMENSIONS				
	A	B	C	D	E
361-42	2	7/8	1/2	1/4-20	5/8
361-44	2-1/2	15/16	9/16	5/16-18	23/32
361-46	3-1/4	1	5/8	3/8-16	25/32
361-48	3-15/16	1-3/32	3/4	1/2-13	7/8



The Folding handle comes in threaded hole type and stud type. These can be folded away when not in use.

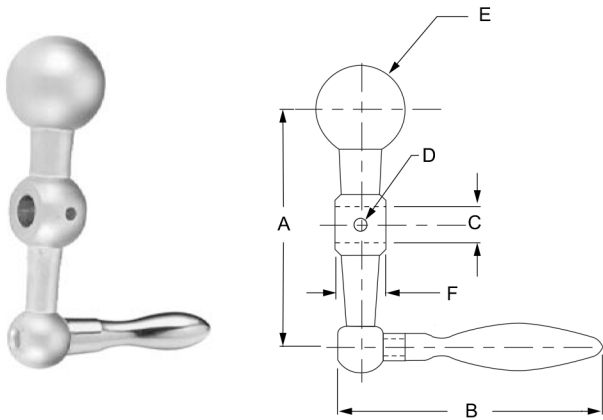


FOLDING HANDLE						
Stud Type - Black Steel Stem - Bakelite Handle						
P/N	DIMENSIONS					
	A	B	C	D	E	G
361-52	2	7/8	5/8	5/8	10-24	1/2
361-54	2-1/2	15/16	25/32	25/32	1/4-20	5/8
361-56	3-1/8	1	25/32	25/32	5/16-18	3/4

BALANCED STEEL SINGLE CRANK HANDLE						
Polished Chrome Plate						
P/N	DIMENSIONS					
	A	B	C	D	E	F
365-02	2	2	5/16	1/8	13/16	7/16
365-03	2-1/2	2-1/4	5/16	1/8	1	9/16
365-04	3-1/8	3-1/4	3/8	5/32	1-1/4	11/16
365-05	4	3-1/4	3/8	5/32	1-1/4	11/16
365-06	5	4	1/2	3/16	1-1/2	7/8
365-07	6-1/8	4	1/2	3/16	1-1/2	7/8

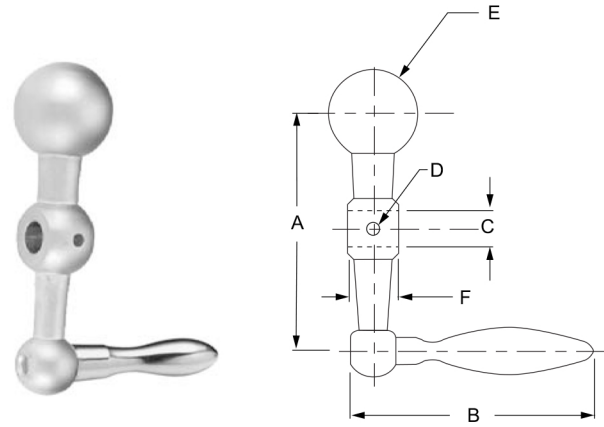
HANDLES

This Balanced Handle is for use as a replacement for Bridgeport Mills. It has a Center Hole cross drilled on one wall.



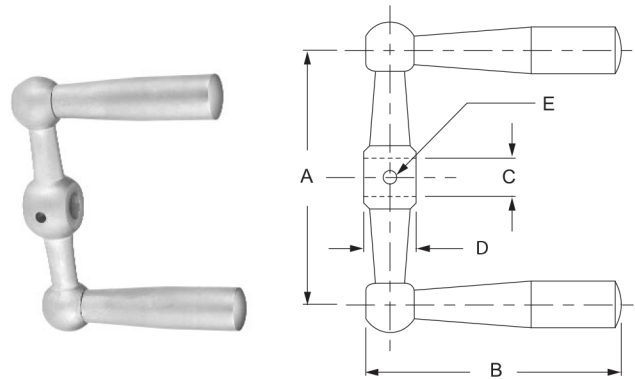
SINGLE CRANK HANDLE							
Revolving Handle - Balanced Steel - Polished Chrome Plate							
P/N	DIMENSIONS						KEYWAY
	A	B	C	D	E	F	
365-10	2-1/2	2-3/4	5/16	1/8	1	9/16	-
365-12	3-1/8	3-1/2	3/8	5/32	1-1/4	11/16	-
365-14	4	3-1/2	3/8	5/32	1-1/4	11/16	-
365-16	5	4-3/16	1/2	3/16	1-1/2	7/8	-
365-18*	6	4-3/16	5/8	3/16	1-1/2	7/8	1/8x1/16

* This art is a new handle for Bridgeport Mills



SINGLE CRANK HANDLE							
Solid Handle - Balanced Steel - Polished Chrome Plate							
P/N	DIMENSIONS						KEYWAY
	A	B	C	D	E	F	
365-11	2-1/2	2-9/16	5/16	1/8	1	9/16	-
365-13	3-1/8	3-1/4	3/8	5/32	1-1/4	11/16	-
365-15	4	3-1/4	3/8	5/32	1-1/4	11/16	-
365-17	5	3-15/16	1/2	3/16	1-1/2	7/8	-
365-19*	6	3-15/16	5/8	3/16	1-1/2	7/8	1/8x1/16

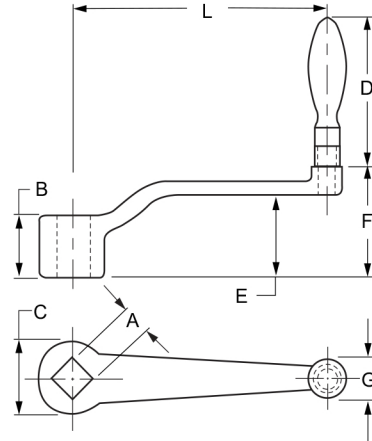
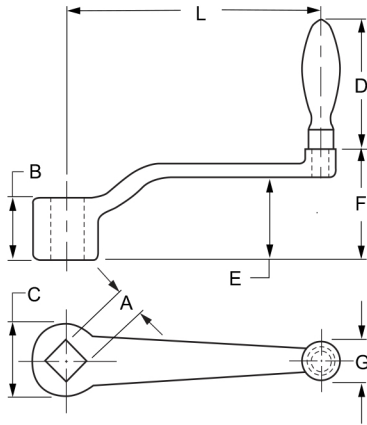
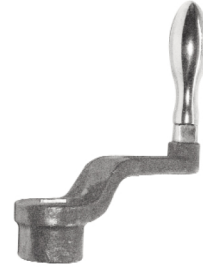
This Double Crank Handle is used for lathe saddle and other applications where small but precise motion is required for greater clamping pressure. A mounting hole is cross drilled in one wall for easy pin installation.



DOUBLE CRANK HANDLE					
Solid Handle - Balanced - Polished Chrome Plate					
P/N	DIMENSIONS				
	A	B	C	D	E
365-22	2	2	5/16	7/16	1/8
365-24	2-1/2	2-1/2	5/16	9/16	1/8
365-26	3-1/4	3-1/4	3/8	11/16	5/32

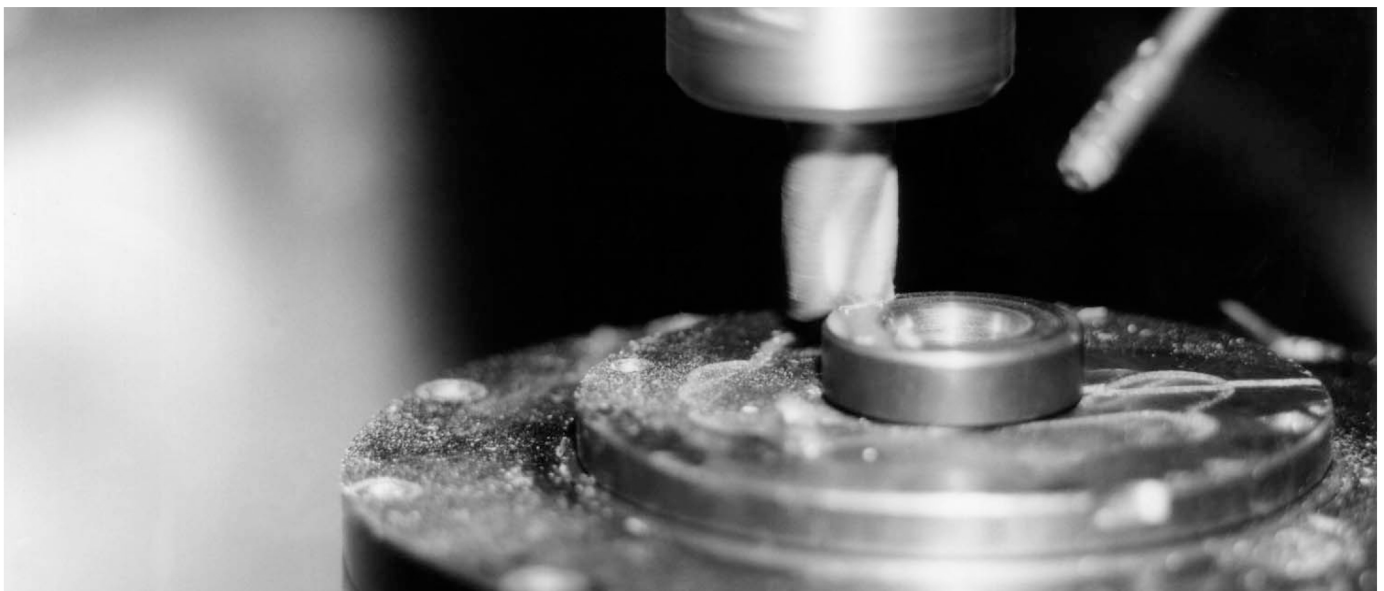
HANDLES

The Crank Handle is rugged with a comfortable grip.



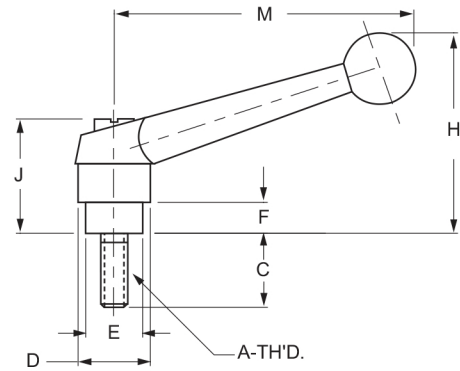
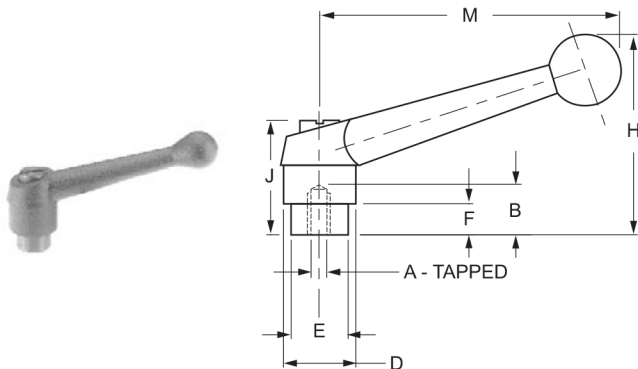
CRANK HANDLE								
Solid Type - Malleable Iron - Chrome Plate								
P/N	DIMENSIONS							
	A	B	C	D	E	F	G	L
365-30	1/2	1-1/16	1-1/4	2-5/8	1.50	2.12	5/8	4
365-32	5/8	1-5/16	1-9/16	3-3/16	1.88	2.63	3/4	6
365-34	3/4	1-9/16	1-13/16	3-3/4	2.35	3.22	7/8	8
365-36	7/8	1-13/16	2-1/8	3-3/4	2.76	3.63	7/8	10

CRANK HANDLE								
Revolving Type - Malleable Iron - Chrome Plate								
P/N	DIMENSIONS							
	A	B	C	D	E	F	G	L
365-31	1/2	1-1/16	1-1/4	2-13/16	1.50	2.12	5/8	4
365-33	5/8	1-5/16	1-9/16	3-3/8	1.88	2.63	3/4	6
365-35	3/4	1-9/16	1-13/16	4	2.35	3.22	7/8	8
365-37	7/8	1-13/16	2-1/8	4	2.76	3.63	7/8	10



HANDLES

This handsome zinc alloy handle is adjustable to 20 - 45 positions. Then the handle is lifted, the spline is disconnected while the insert or stud remains stationary. The handle can be rotated to the desired position. The release of the handle will re-engage the spline for tightening and loosening action. The Adjustable Handle can be used in tight spots, with no dead angles. It can be easily repositioned out of the way. The Adjustable Handle has convenient positions for maximum leverage and positive grip.



ADJUSTABLE HANDLE

Type A - Zinc Alloy - Black

P/N	DIMENSIONS							
	A	B	D	E	F	H	J	M
367-12	1/8 REAM	7/16	3/4	17/32	1/4	1-13/16	1-1/8	2-9/16
367-13	1/4-20	7/16	3/4	17/32	1/4	1-13/16	1-1/8	2-9/16
367-14	5/16-18	7/16	3/4	17/32	1/4	1-13/16	1-1/8	2-9/16
367-20	M8	7/16	3/4	17/32	1/4	1-13/16	1-1/8	2-9/16
367-22	1/4 REAM	1/2	7/8	5/8	13/32	2-5/16	1-1/2	3-1/8
367-23	5/16-18	1/2	7/8	5/8	13/32	2-5/16	1-1/2	3-1/8
367-24	3/8-16	1/2	7/8	5/8	13/32	2-5/16	1-1/2	3-1/8
367-30	M10	1/2	7/8	5/8	13/32	2-5/16	1-1/2	3-1/8
367-32	5/16 REAM	5/8	1	3/4	13/32	2-5/8	1-11/16	3-3/4
367-33	3/8-16	5/8	1	3/4	13/32	2-5/8	1-11/16	3-3/4
367-34	1/2-13	5/8	1	3/4	13/32	2-5/8	1-11/16	3-3/4
367-40	M12	5/8	1	3/4	13/32	2-5/8	1-11/16	3-3/4
367-42	3/8 REAM	7/8	1-1/4	15/16	15/32	3-1/8	2	4-5/16
367-43	1/2-13	7/8	1-1/4	15/16	15/32	3-1/8	2	4-5/16
367-44	5/8-11	7/8	1-1/4	15/16	15/32	3-1/8	2	4-5/16
367-50	M16	7/8	1-1/4	15/16	15/32	3-1/8	2	4-5/16

ADJUSTABLE HANDLE

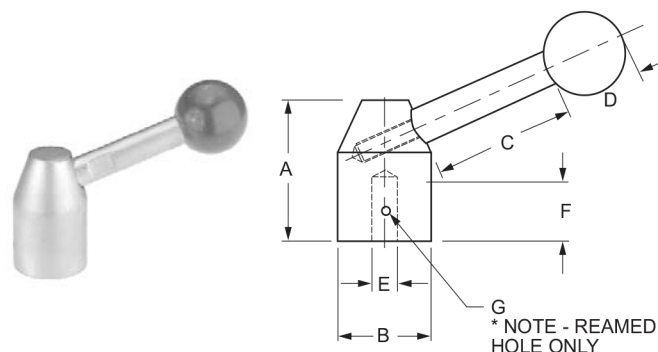
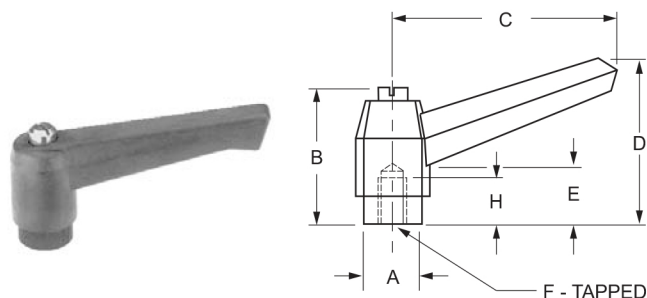
Type B - Zinc Alloy - Black

P/N	DIMENSIONS							
	A	C	D	E	F	H	J	M
367-15	5/16-18	3/4	3/4	17/32	1/4	1-13/16	1-1/8	2-9/16
367-16	5/16-18	1	3/4	17/32	1/4	1-13/16	1-1/8	2-9/16
367-17	5/16-18	1-1/2	3/4	17/32	1/4	1-13/16	1-1/8	2-9/16
367-18	5/16-18	2	3/4	17/32	1/4	1-13/16	1-1/8	2-9/16
367-19	M8	2	3/4	17/32	1/4	1-13/16	1-1/8	2-9/16
367-25	3/8-16	3/4	7/8	5/8	13/32	2-5/16	1-1/2	3-1/8
367-26	3/8-16	1	7/8	5/8	13/32	2-5/16	1-1/2	3-1/8
367-27	3/8-16	1-1/2	7/8	5/8	13/32	2-5/16	1-1/2	3-1/8
367-28	3/8-16	2	7/8	5/8	13/32	2-5/16	1-1/2	3-1/8
367-29	M10	2	7/8	5/8	13/32	2-5/16	1-1/2	3-1/8
367-35	1/2-13	1	1	3/4	13/32	2-5/8	1-11/16	3-3/4
367-36	1/2-13	1-1/2	1	3/4	13/32	2-5/8	1-11/16	3-3/4
367-37	1/2-13	2	1	3/4	13/32	2-5/8	1-11/16	3-3/4
367-38	1/2-13	2-1/2	1	3/4	13/32	2-5/8	1-11/16	3-3/4
367-39	M12	3	1	3/4	13/32	2-5/8	1-11/16	3-3/4
367-45	5/8-11	1-1/2	1-1/4	15/16	15/32	3-1/8	2	4-5/16
367-46	5/8-11	2	1-1/4	15/16	15/32	3-1/8	2	4-5/16
367-47	5/8-11	2-1/2	1-1/4	15/16	15/32	3-1/8	2	4-5/16
367-49	M16	3	1-1/4	15/16	15/32	3-1/8	2	4-5/16

HANDLES

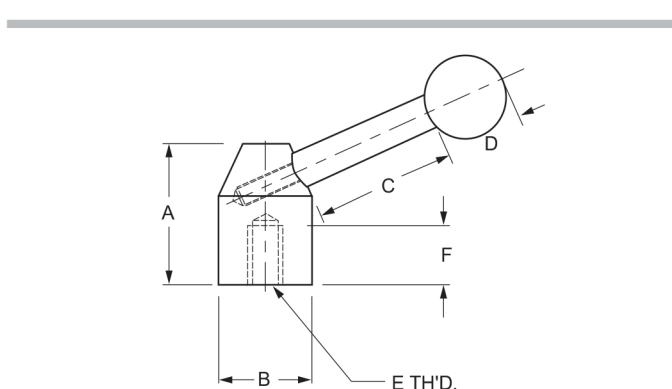
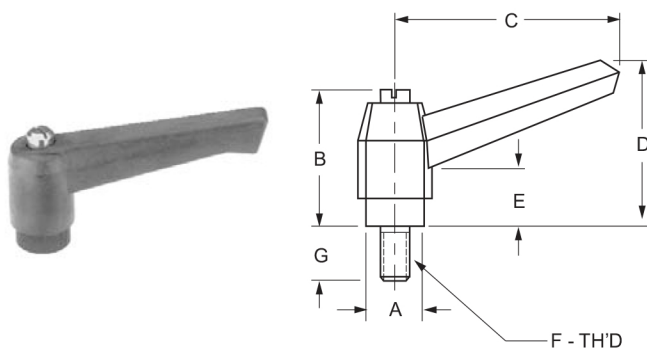
The High Impact Plastic Handle is similar to the Adjustable handle, except that the construction is of strong, high impact, reinforced plastic with steel insert. An economical thread design for lighter applications.

The Lever Handle is a fast, efficient means for obtaining great clamping force. This piece has a plastic ball at the end of the angled lever end.



ADJUSTABLE HANDLE							
Reamed Hole Type - Zinc Alloy - Black ABS Handle - Black Steel Insert							
P/N	DIMENSIONS						
	A	B	C	D	E	F	H
367-52	5/8	1-7/16	2-7/16	1-3/4	5/8	5/16-18	1/2
367-53	5/8	1-7/16	2-7/16	1-3/4	5/8	M8	1/2
367-62	3/4	1-3/4	3-1/8	2-1/8	7/8	3/8-16	5/8
367-63	3/4	1-3/4	3-1/8	2-1/8	7/8	M10	5/8
367-72	1	2-1/8	3-7/8	2-5/8	15/16	1/2-13	3/4

LEVER HANDLE							
Reamed Hole Type - Steel Handle - Bakelite Ball End - Chrome Plate							
P/N	DIMENSIONS						
	A	B	C	D	E	F	G
368-02	1-1/2	1	1-1/2	7/8	3/8	5/8	1/8
368-03	1-1/2	1	3	7/8	3/8	5/8	1/8
368-04	1-7/8	1-1/4	3-1/8	1-1/4	1/2	3/4	5/32
368-05	1-7/8	1-1/4	4.7	1-1/4	1/2	3/4	5/32
368-06	2-3/8	1-9/16	3-7/8	1-1/2	5/8	1	3/16
368-07	2-3/8	1-9/16	6.4	1-1/2	5/8	1	3/16

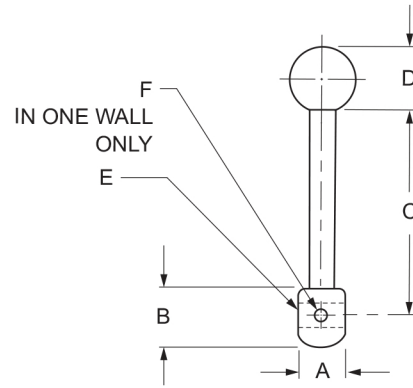
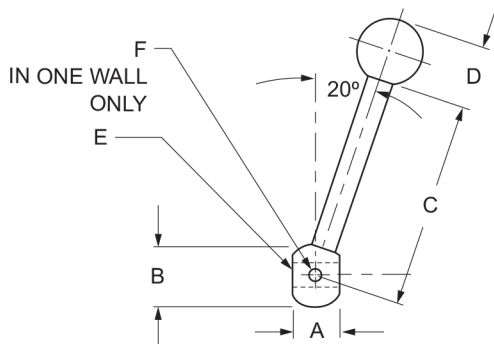


ADJUSTABLE HANDLE							
Stud Type - Zinc Alloy - Black ABS Handle - Black Steel Insert							
P/N	DIMENSIONS						
	A	B	C	D	E	F	G
367-55	5/8	1-7/16	2-7/16	1-3/4	5/8	5/16-18	3/4
367-56	5/8	1-7/16	2-7/16	1-3/4	5/8	5/16-18	1
367-57	5/8	1-7/16	2-7/16	1-3/4	5/8	M8	1
367-65	3/4	1-3/4	3-1/8	2-1/8	7/8	3/8-16	1
367-66	3/4	1-3/4	3-1/8	2-1/8	7/8	3/8-16	1-1/4
367-67	3/4	1-3/4	3-1/8	2-1/8	7/8	M10	1-1/4
367-75	1	2-1/8	3-7/8	2-5/8	15/16	1/2-13	1-1/4
367-76	1	2-1/8	3-7/8	2-5/8	15/16	1/2-13	1-1/2

LEVER HANDLE						
Tapped Hole Type - Steel Handle - Bakelite Ball End - Chrome Plate						
P/N	DIMENSIONS					
	A	B	C	D	E	F
368-12	1-1/2	1	1-1/2	7/8	1/2-13	9/16
368-13	1-1/2	1	3	7/8	1/2-13	9/16
368-14	1-7/8	1-1/4	3-1/8	1-1/4	5/8-11	11/16
368-15	1-7/8	1-1/4	4.7	1-1/4	5/8-11	11/16
368-16	2-3/8	1-9/16	3-7/8	1-1/2	3/4-10	7/8
368-17	2-3/8	1-9/16	6.4	1-1/2	3/4-10	7/8

HANDLES

The Lever Handle is a fast, efficient means for obtaining great clamping force. This piece has a plastic ball at the end of the angled lever end.



CHROME LEVER CLAMP						
Angled - Reamed Type - Steel Handle - Bakelite Ball End - Chrome Plate						
P/N	DIMENSIONS					
	A	B	C	D	E	F
369-00	7/16	5/8	2	3/4	1/4	1/8
369-08	9/16	25/32	2-1/2	13/16	5/16	1/8
369-16	3/4	1	3-1/4	15/16	3/8	5/32
369-24	7/8	1-1/4	4	1-1/4	1/2	3/16
369-32	1-1/8	1-9/16	5	1-1/2	5/8	1/4

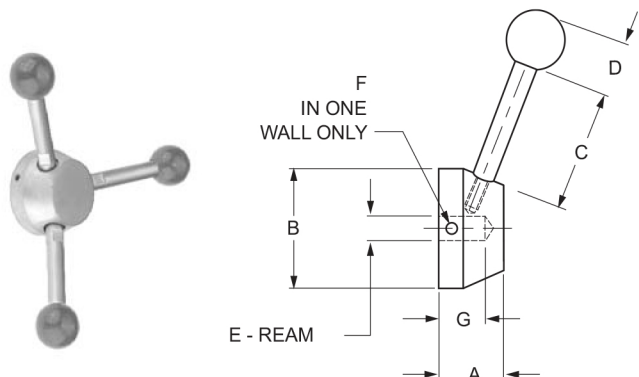
CHROME LEVER CLAMP						
Angled - Tapped Type - Steel Handle - Bakelite Ball End - Chrome Plate						
P/N	DIMENSIONS					
	A	B	C	D	E	F
369-04	7/16	5/8	2	3/4	5/16-18	1/8
369-12	9/16	25/32	2-1/2	13/16	3/8-16	1/8
369-20	3/4	1	3-1/4	15/16	1/2-13	5/32
369-28	7/8	1-1/4	4	1-1/4	5/8-11	3/16
369-36	1-1/8	1-9/16	5	1-1/2	3/4-10	1/4

CHROME LEVER CLAMP						
Straight - Reamed Type - Steel Handle - Bakelite Ball End - Chrome Plate						
P/N	DIMENSIONS					
	A	B	C	D	E	F
369-02	7/16	5/8	2	3/4	1/4	1/8
369-10	9/16	25/32	2-1/2	13/16	5/16	1/8
369-18	3/4	1	3-1/4	15/16	3/8	5/32
369-26	7/8	1-1/4	4	1-1/4	1/2	3/16
369-34	1-1/8	1-9/16	5	1-1/2	5/8	1/4

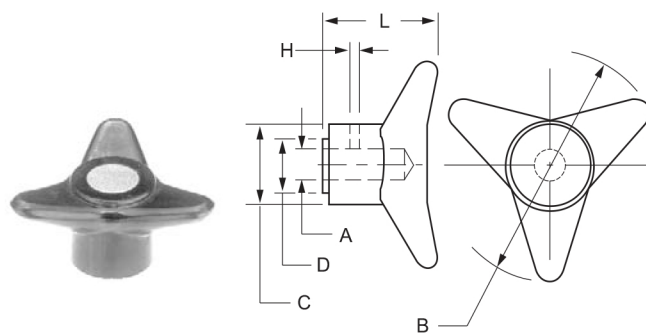
CHROME LEVER CLAMP						
Straight - Tapped Type - Steel Handle - Bakelite Ball End - Chrome Plate						
P/N	DIMENSIONS					
	A	B	C	D	E	F
369-06	7/16	5/8	2	3/4	5/16-18	1/8
369-14	9/16	25/32	2-1/2	13/16	3/8-16	1/8
369-22	3/4	1	3-1/4	15/16	1/2-13	5/32
369-30	7/8	1-1/4	4	1-1/4	5/8-11	3/16
369-38	1-1/8	1-9/16	5	1-1/2	3/4-10	1/4

This Handle is for heavy duty applications. It is available in single or tree spoke versions. All handles have a plastic ball at the end of the angled lever end. The mounting is cross drilled to fit a pin for easy fastening.

The lobe knob gives you a positive grip and higher torque than any other knob. The Bakelite handle is heat resistant. The insert is made of brass and is cross drilled for easy installation.

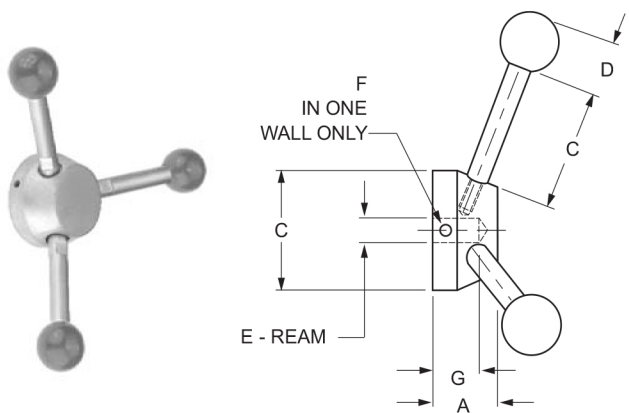


HEAVY DUTY LEVER CLAMP							
Single Spoke - Steel Handle - Bakelite Ball End - Chrome Plate							
P/N	DIMENSIONS						
	A	B	C	D	E	F	G
*369-50	7/8	1-9/16	1-9/16	3/4	5/16	1/8	5/8
*369-60	1	2	2	1	3/8	3/16	3/4
*369-70	1-3/16	2-3/8	2	1-1/4	1/2	3/16	7/8



HIGH TORQUE THREE LOBE KNOB						
Black Bakelite - Brass Insert						
P/N	DIMENSIONS					
	A	B	C	D	L	H
*369-90	3/8	3-1/8	1-3/16	3/4	1-3/8	1/8
*369-95	1/2	3-15/16	1-3/8	7/8	1-7/8	1/8

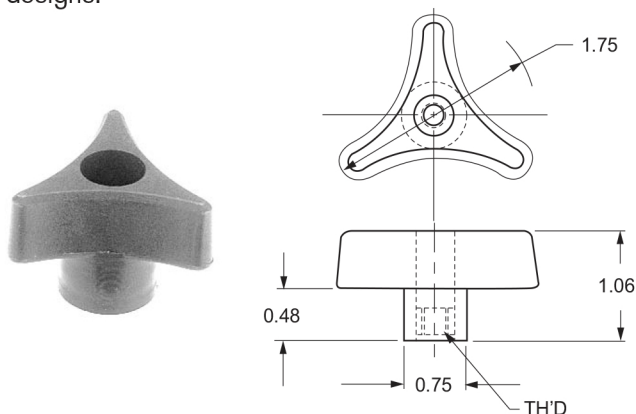
* Discontinued, available while supplies last.



HEAVY DUTY LEVER CLAMP							
Three Spoke - Steel Handle - Bakelite Ball End - Chrome Plate							
P/N	DIMENSIONS						
	A	B	C	D	E	F	G
*369-55	7/8	1-9/16	1-9/16	3/4	5/16	1/8	5/8
*369-65	1	2	2	1	3/8	3/16	3/4
*369-75	1-3/16	2-3/8	2	1-1/4	1/2	3/16	7/8

* Discontinued, available while supplies last.

The Three Prong Knobs have a satin finish and an aerodynamic look. All edges have been rounded for a comfortable feel. The hub is extra tall to provide greater knuckle clearance, while durable thermoplastic construction makes this knob ideal for a wide variety of applications. It is furnished with metal inserts for both Blind and Thru Hole designs.



THREE PRONG KNOBS		
Steel Insert		
P/N	DIMENSIONS	
	5/16-18	3/8-16
THRU HOLE	369-96	369-98
BLIND	369-97	369-99