

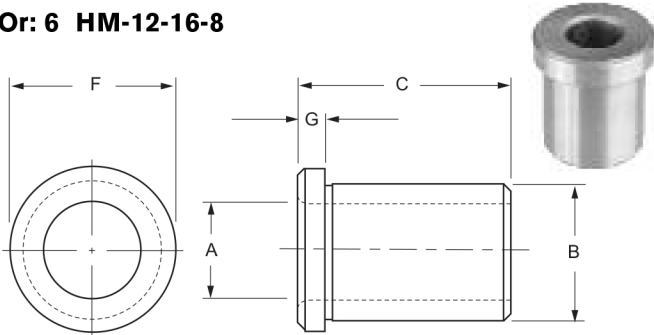
# METRIC HEAD PRESS FIT - TYPE HM

When ordering specify:

Example:

Quantity	Bushing Type	I.D.(A)	O.D.(B)	Length(C)
6	HM	8	12	16

Or: 6 HM-12-16-8



- The length is measured overall.
- All bushings over 25mm are not returnable

A I.D. RANGE	B O.D. TOLERANCE	C	F	G	ANSI SYMBOL	PRICE CODE
.035 1.00	<b>4</b> 4.027-4.019	6	7	2	HM-4-6	228
		9	7	2	HM-4-9	233
1.01---- 1.80	<b>4</b> 4.027-4.019	6	7	2	HM-4-6	213
		9	7	2	HM-4-6	220
1.81 2.60	<b>5</b> 5.027-5.019	6	8	2	HM-5-6	141
		9	8	2	HM-5-9	147
2.61 3.30	<b>6</b> 6.027-6.019	8	9	2.5	HM-6-8	136
		12	9	2.5	HM-6-12	141
		16	9	2.5	HM-6-16	154
3.31 4.00	<b>7</b> 7.032-7.023	8	10	2.5	HM-7-8	125
		12	10	2.5	HM-7-12	130
		16	10	2.5	HM-7-16	132
4.01 5.00	<b>8</b> 8.032-8.023	8	11	2.5	HM-8-8	125
		12	11	2.5	HM-8-12	130
		16	11	2.5	HM-8-16	132
5.01 6.00	<b>10</b> 10.032-10.023	10	13	3	HM-10-10	125
		16	13	3	HM-10-16	129
		20	13	3	HM-10-20	152
6.01 8.00	<b>12</b> 12.039-12.028	10	15	3	HM-12-10	125
		16	15	3	HM-12-16	129
		20	15	3	HM-12-20	139
8.01 10.00	<b>15</b> 15.039-15.028	12	18	3	HM-15-12	121
		20	18	3	HM-15-20	129
		25	18	3	HM-15-25	130
10.01 12.00	<b>18</b> 18.039-18.028	12	22	4	HM-18-12	125
		20	22	4	HM-18-20	129
		25	22	4	HM-18-25	133
12.01 15.00	<b>22</b> 22.048-22.035	16	26	4	HM-22-16	136
		28	26	4	HM-22-28	145
		36	26	4	HM-22-36	151
15.01 18.00	<b>26</b> 26.048-26.035	16	30	4	HM-26-16	136
		28	30	4	HM-26-28	141
		36	30	4	HM-26-36	150
18.01 22.00	<b>30</b> 30.048-30.035	20	34	5	HM-30-20	163
		36	34	5	HM-30-36	189
		45	34	5	HM-30-45	196
22.01 26.00	<b>35</b> 35.059-35.043	20	39	5	HM-35-20	164
		36	39	5	HM-35-36	190
		45	39	5	HM-35-45	198

A I.D. RANGE	B O.D. TOLERANCE	C	F	G	ANSI SYMBOL	PRICE CODE
26.01 30.00	<b>42</b> 42.059-42.043	25	46	5	HM-42-25	191
		45	46	5	HM-42-45	198
		56	46	5	HM-42-56	243
30.01 35.00	<b>48</b> 42.059-42.043	25	52	5	HM-48-25	197
		45	52	5	HM-48-45	216
		56	52	5	HM-48-56	242
35.01 42.00	<b>55</b> 55.072-55.053	30	59	5	HM-55-30	236
		56	59	5	HM-55-56	262
		67	59	5	HM-55-67	359
42.01 48.00	<b>62</b> 62.072-62.053	30	66	6	HM-62-30	249
		56	66	6	HM-62-56	267
		67	66	6	HM-62-67	358
48.01 55.00	<b>70</b> 70.078-70.059	30	74	6	HM-70-30	353
		56	74	6	HM-70-56	369
		67	74	6	HM-70-67	373
55.01 63.00	<b>78</b> 78.078-78.059	35	82	6	HM-78-35	365
		67	82	6	HM-78-67	386
		78	82	6	HM-78-78	392
63.01 70.00	<b>85</b> 85.093-85.071	35	90	6	HM-85-35	403
		67	90	6	HM-85-67	443
		78	90	6	HM-85-78	453
70.01 78.00	<b>95</b> 95.093-95.071	40	100	6	HM-95-40	415
		78	100	6	HM-95-78	461
		105	100	6	HM-95-105	507
78.01 85.00	<b>105</b> 105.101-105.079	40	110	6	HM-105-40	429
		78	110	6	HM-105-78	473
		105	110	6	HM-105-105	517
85.01 95.00	<b>115</b> 115.101-115.079	45	120	6	HM-115-45	449
		89	120	6	HM-115-89	503
		112	120	6	HM-115-112	543
95.01 105.00	<b>125</b> 125.117-125.092	45	130	6	HM-125-45	473
		89	130	6	HM-125-89	530
		112	130	6	HM-125-112	566

All the above standard sizes are no counterbore. See back cover for standard metric drill chart.