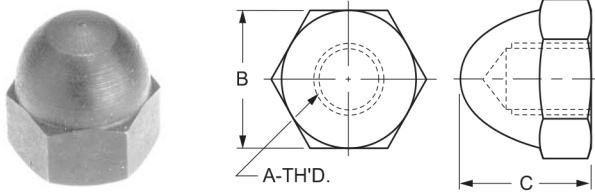
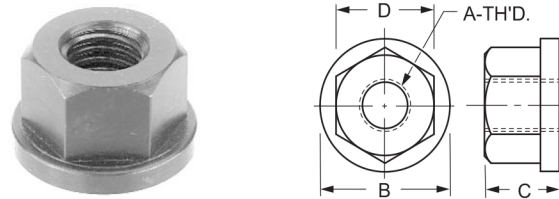


# FLANGE NUTS AND WASHERS



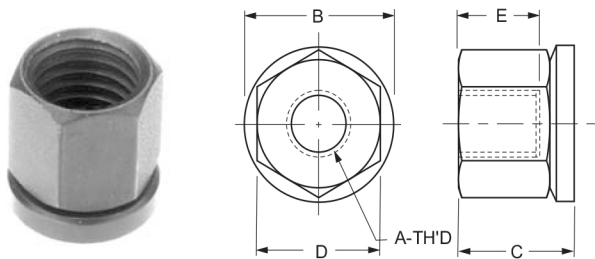
Flange Nuts used when washers are not practical.



<b>ACORN NUTS</b> Light - Low Crown - Case Hardened - Black Oxide Finish			
P/N	DIMENSIONS		
	A	B	C
262-50	10-24	3/8	13/32
262-52	1/4-20	7/16	15/32
262-54	5/16-18	1/2	17/32
262-56	3/8-16	9/16	5/8
262-58	7/16-14	5/8	11/16
262-60	1/2-13	3/4	13/16
262-62	9/16-12	7/8	15/16
262-64	5/8-11	15/16	1
262-66	3/4-10	1-1/16	1-5/32
262-68	7/8-9	1-1/4	1-23/64
262-70	1/8	1-7/16	1-35/64

<b>FLANGE NUTS UNC</b> Course Thread - Case Hardened - Black Oxide Finish				
P/N	DIMENSIONS			
	A	B	C	D
264-00	1/4-20	5/8	5/16	1/2
264-01	5/16-18	3/4	3/8	9/16
264-02	3/8-16	7/8	1/2	11/16
264-03	7/16-14	1	9/16	3/4
264-04	1/2-13	1-1/8	11/16	7/8
264-05	5/8-11	1-3/8	13/16	1-1/16
264-06	3/4-10	1-5/8	1	1-1/4
264-07	7/8-9	1-3/4	1-1/8	1-7/16
264-08	1-8	2	1-1/4	1-5/8
264-09	1-1/8-7	2-1/4	1-3/8	1-13/16
264-10	1-1/4-7	2-1/2	1-1/4	1-13/16

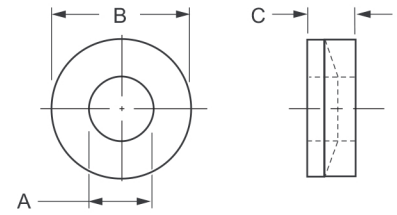
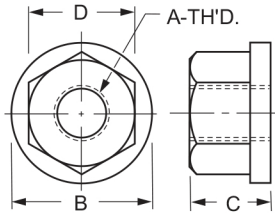
The Swivel Nut features a hardened pad that remains stationary upon contacting the part being clamped. This allows a rigid clamping without marring or moving of the part.



<b>SWIVEL NUTS</b> Case Hardened - Black Oxide Finish					
P/N	DIMENSIONS				
	A	B	C	D	E
263-00	10-24	5/16	5/16	1/4	13/64
263-05	1/4-20	3/8	13/32	5/16	3/16
263-10	5/16-18	7/16	15/32	3/8	1/4
263-15	3/8-16	1/2	17/32	7/16	17/64
263-20	1/2-13	11/16	21/32	5/8	3/8
263-25	5/8-11	7/8	27/32	3/4	7/16
263-30	3/4-10	1	1	7/8	1/2

<b>FLANGE NUTS UNF</b> Fine Thread - Case Hardened - Black Oxide Finish				
P/N	DIMENSIONS			
	A	B	C	D
265-00	1/4-28	5/8	5/16	1/2
265-01	5/16-24	3/4	3/8	9/16
265-02	3/8-24	7/8	1/2	11/16
265-03	7/16-20	1	9/16	3/4
265-04	1/2-20	11/8	11/16	7/8
265-05	5/8-18	1-3/8	13/16	1-1/16
265-06	3/4-16	1-5/8	1	1-1/4
265-07	7/8-14	1-3/4	1-1/8	1-7/16
265-08	1-14	2	1-1/4	1-5/8
265-09	1-1/8-12	2-1/4	1-3/8	1-13/16
265-10	1-1/4-12	2-1/2	1-1/4	1-13/16

# FLANGE NUTS AND WASHERS



## STAINLESS STEEL FLANGE NUTS

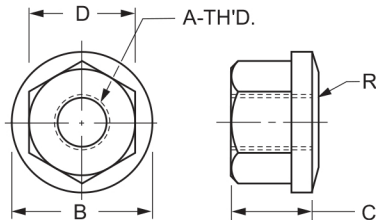
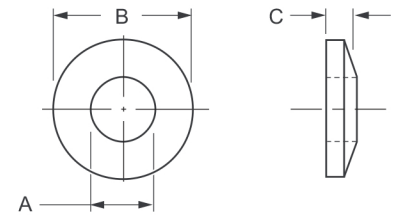
303 Stainless Steel

P/N	DIMENSIONS			
	A	B	C	D
266-00	1/4-20	5/8	5/16	1/2
266-01	5/16-18	3/4	3/8	9/16
266-02	3/8-16	7/8	1/2	11/16
266-03	7/16-14	1	9/16	3/4
266-04	1/2-13	1-1/8	11/16	7/8
266-05	5/8-11	1-3/8	13/16	1-1/16
266-06	3/4-10	1-5/8	1	1-1/4
266-07	7/8-9	1-3/4	1-1/8	1-7/16
266-08	1-8	2	1-1/4	1-5/8
266-09	1-1/4-7	2-1/2	1-1/4	1-13/16

## STAINLESS STEEL SPHERICAL WASHER SETS

DIMENSIONS

P/N	DIMENSIONS			STUD SIZE
	A	B	C	
268-85	9/32	5/8	3/16	3/16 & 1/4
268-86	13/32	7/8	1/4	3/8
268-87	17/32	1-1/8	5/16	7/16 & 1/2
268-88	21/32	1-3/8	5/16	5/8
268-89	25/32	1-5/8	3/8	3/4



## STAINLESS STEEL SPHERICAL FLANGE NUTS

303 Stainless Steel

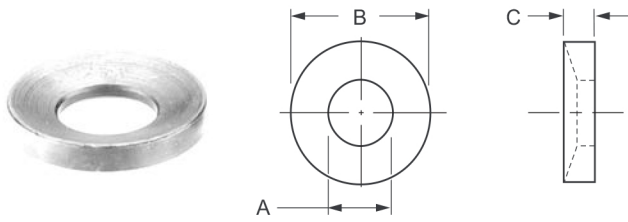
P/N	DIMENSIONS				
	A	B	C	D	R
268-70	1/4-20	5/8	5/16	1/2	3/4
268-72	5/16-18	3/4	3/8	9/16	1
268-74	3/8-16	7/8	1/2	11/16	1-1/4
268-76	1/2-13	1-1/8	11/16	7/8	1-1/2
268-78	5/8-11	1-3/8	13/16	1-1/16	1-3/4
268-80	3/4-10	1-5/8	1	1-1/4	2-1/4

## STAINLESS STEEL SPHERICAL WASHER SETS TOP ONLY

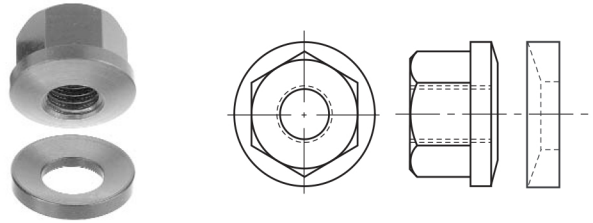
DIMENSIONS

P/N	DIMENSIONS			STUD SIZE
	A	B	C	
268-90	9/32	5/8	1/8	3/16 & 1/4
268-91	13/32	7/8	9/64	3/8
268-92	17/32	1-1/8	13/64	7/16 & 1/2
268-93	21/32	1-3/8	13/64	5/8
268-94	25/32	1-5/8	1/4	3/4

# FLANGE NUTS AND WASHERS

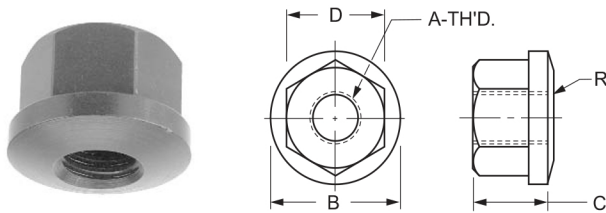


Assembly consists of 269-00 series and the bottom half of 276-00

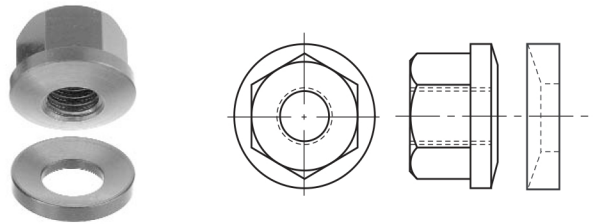


STAINLESS STEEL SPHERICAL WASHER SETS BOTTOM ONLY				
P/N	DIMENSIONS			STUD SIZE
	A	B	C	
268-95	9/32	5/8	1/8	3/16 & 1/4
268-96	13/32	7/8	11/64	3/8
268-97	17/32	1-1/8	13/64	7/16 & 1/2
268-98	21/32	1-3/8	13/64	5/8
268-99	25/32	1-5/8	1/4	3/4

SPHERICAL FLANGE NUTS ASSEMBLIES			
Case Hardened, Black Oxide Finish			
P/N	DIMENSIONS		
	THREAD SIZE	P/N	THREAD SIZE
269-56	1/4-20	269-68	3/4-10
269-58	5/16-18	269-70	7/8-9
269-60	3/8-16	269-72	1-8
269-62	7/16-14	269-74	1-1/8-7
269-64	1/2-13	269-76	1-1/4-7
269-66	5/8-11		



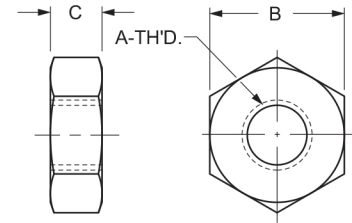
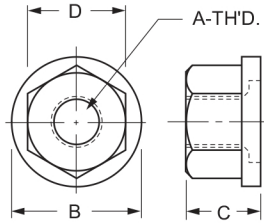
Assembly consists of 268-70 series and the 268-95 series



SPHERICAL FLANGE NUTS					
Case Hardened, Black Oxide Finish					
P/N	DIMENSIONS				
	A	B	C	D	R
269-00	1/4-20	5/8	5/16	1/2	3/4
269-05	5/16-18	3/4	3/8	9/16	1-1/4
269-10	3/8-16	7/8	1/2	11/16	1-1/4
269-15	7/16-14	1	9/16	3/4	1-1/2
269-20	1/2-13	1-1/8	11/16	7/8	1-1/2
269-25	5/8-11	1-3/8	13/16	1-1/16	1-3/4
269-30	3/4-10	1-5/8	1	1-1/4	2-1/4
269-35	7/8-9	1-3/4	1-1/8	1-7/16	2-1/2
269-40	1/8	2	1-1/4	1-5/8	2-3/4
269-45	1-1/8-7	2-1/4	1-1/4	1-13/16	3
269-50	1-1/4-7	2-1/2	1-1/4	1-13/16	3

STAINLESS STEEL SPHERICAL FLANGE NUTS ASSEMBLIES		
416 Stainless Steel		
P/N	DIMENSIONS	
	THREAD SIZE	TOTAL DEGREE OF ROTATION
269-80	1/4-20	5
269-81	5/16-18	5
269-82	3/8-16	3
269-83	1/2-13	4
269-84	5/8-11	2
269-85	3/4-10	2

# FLANGE NUTS AND WASHERS



## SWIVEL TYPE FLANGE NUTS

Case Hardened, Black Oxide Finish

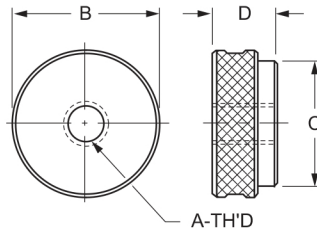
P/N	DIMENSIONS			
	A	B	C	D
270-00	1/4-20	5/8	3/8	1/2
270-05	5/16-18	3/4	7/16	9/16
270-10	3/8-16	7/8	17/32	11/16
270-15	1/2-13	1-1/8	23/32	7/8
270-20	5/8-11	1-3/8	29/32	1-1/16
270-25	3/4-10	1-5/8	1-1/64	1-1/4
270-30	7/8-9	1-3/4	1-1/8	1-7/16
270-35	1-8	2	1-15/64	1-5/8

## HEAVY HEX NUTS

Case Hardened, Black Oxide Finish

P/N	DIMENSIONS		
	A	B	C
272-00	1/4-20	1/2	15/64
272-05	5/16-18	9/16	19/64
272-10	3/8-16	11/16	23/64
272-15	7/16-14	3/4	27/64
272-20	1/2-13	7/8	31/64
272-25	5/8-11	1-1/16	39/64
272-30	3/4-10	1-1/4	47/64
272-35	7/8-9	1-7/16	55/64
272-40	1-8	1-5/8	63/64
272-45	1-1/8-7	1-13/16	1-7/64
272-50	1-1/4-7	2	1-7/32

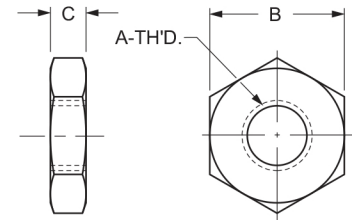
Check Nuts prevent backing off during operation due to chatter or vibration. Check Nuts can be used in conjunction with many other components such as Knurled Head Screws, Torque Head Screws, Hand Knob Assemblies, Toggle Shoe Assemblies and many other tooling applications. They are furnished with all Torque Head Screws and Swivel Pads.



## CHECK NUTS

Case Hardened, Black Oxide Finish

P/N	DIMENSIONS			
	A	B	C	D
271-00	10-32	3/4	7/16	3/16
271-05	1/4-20	3/4	1/2	7/32
271-10	5/16-18	3/4	1/2	1/4
271-15	3/8-16	1	3/4	7/16
271-20	1/2-13	1	3/4	7/16
271-25	5/8-11	1-1/16	13/16	1/2



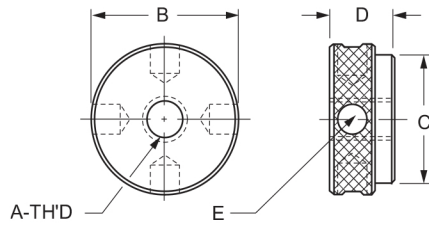
## HEAVY HEX JAM NUTS

Case Hardened, Black Oxide Finish

P/N	DIMENSIONS		
	A	B	C
273-00	1/4-20	1/2	11/64
273-05	5/16-18	9/16	13/64
273-10	3/8-16	11/16	15/64
273-15	7/16-14	3/4	17/64
273-20	1/2-13	7/8	19/64
273-25	5/8-11	1-1/16	23/64
273-30	3/4-10	1-1/4	27/64
273-35	7/8-9	1-7/16	31/64
273-40	1-8	1-5/8	35/64
273-45	1-1/8-7	1-13/16	39/64
273-50	1-1/4-7	2	23/32

# FLANGE NUTS AND WASHERS

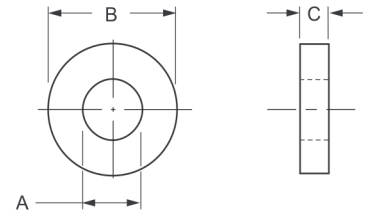
Many sizes functionally interchange or conform to TCMA standards.



## KNURLED LOCK NUTS

Case Hardened, Black Oxide Finish

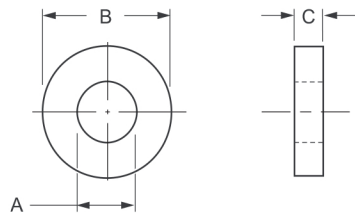
P/N	DIMENSIONS				
	A	B	C	D	E
274-00	3/8-16	1-1/8	1"	1/2	"1/4" - DRILL
274-05	1/2-13	1-1/8	1"	1/2	"1/4" - DRILL
274-10	5/8-11	1-3/8	1"	1/2	"F" - DRILL



## FLAT WASHERS

Case Hardened, Black Oxide Finish

P/N	DIMENSIONS			
	A	B	C	STUD SIZE
275-00	13/64	1/2	3/32	3/16
275-01	1/8	5/16	5/64	#4
275-02	5/32	3/8	5/64	#6
275-03	3/16	7/16	5/64	#8
275-05	9/32	5/8	1/8	1/4
275-10	11/32	3/4	1/8	5/16
275-12	11/32	3/4	3/16	5/16
275-15	13/32	7/8	1/8	3/8
275-16	13/32	7/8	3/16	3/8
275-20	15/32	1	1/8	7/16
275-25	17/32	1-1/8	1/8	1/2
275-27	17/32	1-1/8	3/16	1/2
275-30	21/32	1-3/8	1/8	5/8
275-32	21/32	1-3/8	3/16	5/8
275-35	25/32	1-5/8	5/32	3/4
275-37	25/32	1-5/8	1/4	3/4
275-40	29/32	1-3/4	5/32	7/8
275-42	29/32	1-3/4	1/4	7/8
275-45	1-1/32	2	3/16	1
275-47	1-1/32	2	9/32	1
275-50	1-5/32	2-1/4	7/32	1-1/8
275-55	1-9/32	2-1/2	9/32	1-1/4



## STAINLESS STEEL FLAT WASHERS

DIMENSIONS

P/N	DIMENSIONS			
	A	B	C	STUD SIZE
274-50	13/64	1/2	3/32	3/16
274-51	9/32	5/8	1/8	1/4
274-52	11/32	3/4	1/8	5/16
274-53	13/32	7/8	1/8	3/8
274-54	15/32	1	1/8	7/16
274-55	17/32	1-1/8	1/8	1/2
274-56	21/32	1-3/8	1/8	5/8
274-57	25/32	1-5/8	5/32	3/4
274-58	29/32	1-3/4	5/32	7/8
274-59	1-1/32	2	3/16	1
274-60	1-5/32	2-1/4	7/32	1-1/8
274-71	1-9/32	2-1/2	9/32	1-1/4