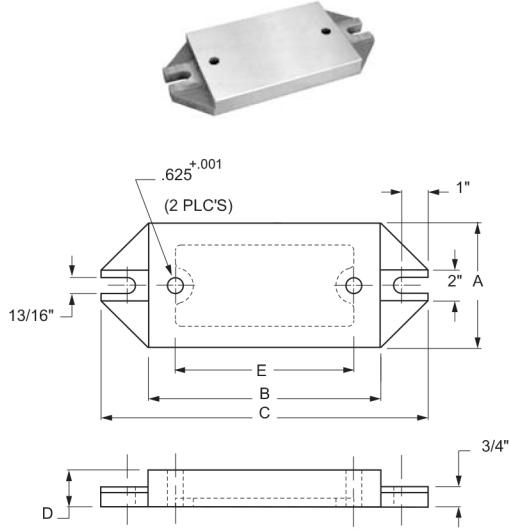


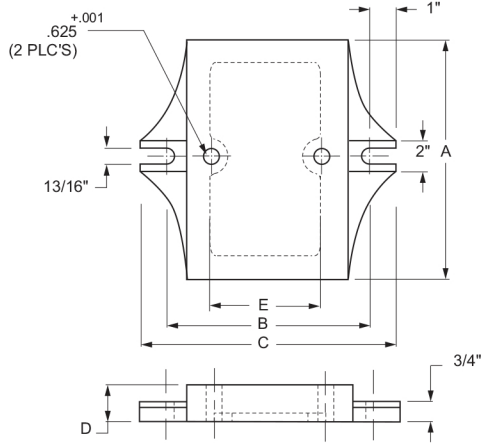
FIXTURE KEYS

All Mill Fixture Bases and Gang Fixture Bases are constructed of ASTM class #35 cast iron. The tops and bottoms are precision ground to within a .002" parallelism. The front edges are finished parallel to the two 0.0625 reamed holes and all mounting surfaces are milled finished.

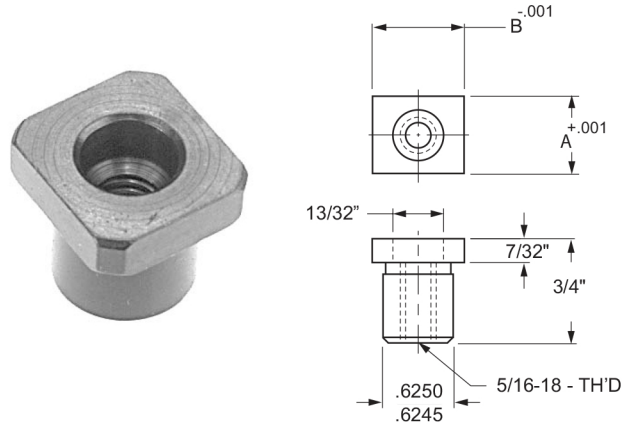
The Fixture Key Reamed Hole eliminates the necessity of milling long slots or pockets for other styles of keys. All sizes have a 5/8 inch diameter shank making them interchangeable. They can be fastened from the bottom with a 1/4-20 socket head cap screw or from the top with a 5/16-18 socket head cap screw. **The Body diameter is central to the flats "A" and "B" within .002 TIR.**



MILL FIXTURE BASE



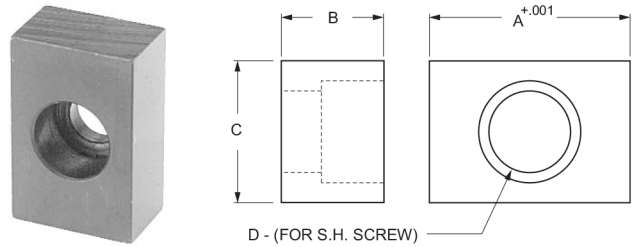
GANG FIXTURE BASE



FIXTURE KEY REAMED HOLE

Case Hardened - Precision Ground - Black Oxide Finish

P/N	DIMENSIONS	
	A	B
169-00	.625	.6875
169-05	.625	.785
169-10	.625	.8125
169-15	.6875	.750
169-20	.6875	.8125
169-25	.750	.8125



D - (FOR S.H. SCREW)

FIXTURE KEY

Case Hardened - Precision Ground - Black Oxide Finish

P/N	DIMENSIONS			
	A	B	C	D
170-00	.500	1/2	3/4	1/4
170-05	.5625	1/2	3/4	1/4
170-10	.625	1/2	3/4	5/16
170-15	.6875	1/2	1	5/16
170-20	.750	1/2	1-1/4	5/16
170-25	.8125	1/2	1-1/4	5/16

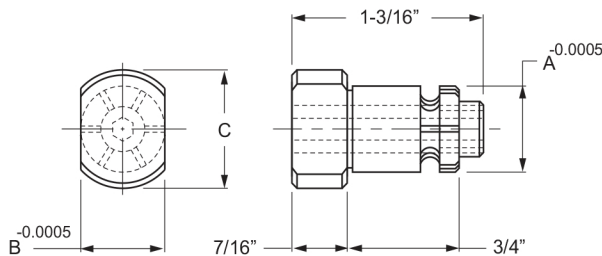
MILL FIXTURE BASE					
P/N	DIMENSIONS				
	A	B	C	D	E
168-50	6	9	13	1-1/4	7
168-55	8	12	16	1-3/8	9.5
168-60	10	15	19	1-1/2	12

GANG FIXTURE PLATED					
P/N	DIMENSIONS				
	A	B	C	D	E
168-75	9	6	13	1-1/4	4
168-80	12	8	16	1-3/8	5.5

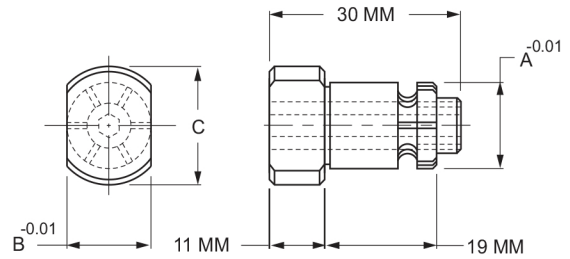
FIXTURE KEYS

Now you can locate jig and fixtures on the machine tool tables and position the part to be machined in one operation. All American® Sine Fixture Keys eliminate the need to slot fixture bases, make step fixture keys, drill and tap keys. All you need to do is ream a 5/8 inch hole. Variations in table slot sizes are easily taken care of by the wide variety of Sine Fixture keys available. Table slot size are designated by the "B" column. Shank sizes are designated in the "A" column. The shanks have an expansion feature whereby the key can be locked in the fixture from either the top or the bottom of the fixture.

- Reduce fixture costs
- Cut extra set-up time
- Meet blueprint tolerances to the decimal point
- Completely interchangeable

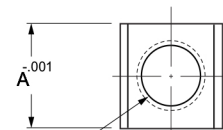
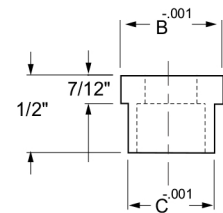


SINE FIXTURE KEY				
P/N	DIMENSIONS			
	A	B	C	LBS.
170-86	.625	.4995	1	.09
170-88	.625	.5620	1	.11
170-90	.625	.6245	1	.11
170-92	.625	.6870	1	.11
170-94	.625	.7495	1-1/8	.13
170-96	.625	.8120	1-1/8	.14
170-98	.625	.8745	1-1/8	.15



METRIC SINE FIXTURE KEY				
P/N	DIMENSIONS			
	A	B	C	KG.
171-01	16	12	25	.04
171-02	16	14	25	.05
171-03	16	16	25	.05
171-04	16	18	29	.05
171-05	16	20	29	.06
171-06	16	22	29	.06
171-07	20	24	35	.07
171-08	20	28	35	.10
171-09	20	32	40	.10

The Step Fixture Keys are used for two different table slots by rotating the key 90°.



STEP FIXTURE KEY				
Black Oxide Finish				
P/N	DIMENSIONS			
	A	B	C	D
*172-00	.5625	.5625	.4375	#10
*172-05	.6250	.6250	.5000	1/4
*172-10	.6875	.6875	.5625	1/4
*172-15	.6875	.6875	.6250	5/16
*172-20	.7500	.7500	.6250	5/16
*172-25	.8125	.8125	.6875	5/16

* Discontinued but available while supplies last.