

E-Z LOK external threads are standard size and pitch to permit use of standard drills and taps. No special top sizes or installation tools are required.

Installation is easy as 1-2-3



Use E-Z LOK Thread Inserts for:

- Jigs and Fixtures
- Bolster Plates
- Dies
- Machine Tools
- Metal Patterns
- Farm Machinery
- Engine Blocks
- Parts Salvage
- Stripped Threads in any material

Power drive tools are available for volume installation...See insert tables for catalog numbers and sizes. **Automatic self-locking external thread with pre-applied, use activated Loctite®.**

E-Z LOK inserts will not back out or vibrate loose. Immediately on installation, micro-encapsulated Loctite begins to set and the newly installed insert can be fastened to within minutes. The adhesive continues to cure overnight until completely set. The adhesive seals against liquids and gases to pressures of 6,000 psi and bonds to virtually all metals.

Q: What's the difference between E-Z LOK and coil threaded inserts?

A: There are two primary differences: design and installation.

DESIGN:

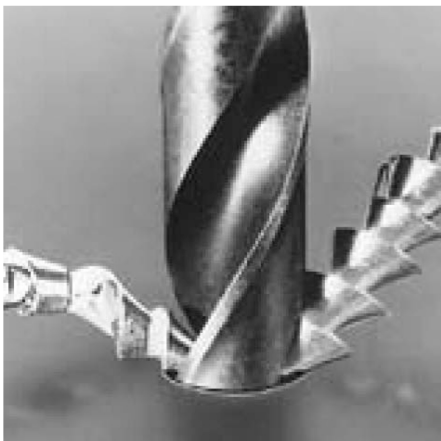
As the name implies, coil inserts are steel wire coiled in a spring-like design. E-Z LOK threaded inserts are screw machined out of solid steel.

INSTALLATION:

To install a coil insert, you must have a special drill, special tap, and special installation tool. If a tap breaks or the installation tool is misplaced, the coil inserts can't be installed until a new tap or installation tool is purchased. E-Z LOK threaded inserts have standard size/pitch threads so they can be installed using standard tools probably already in your toolbox. For example, to install an E-Z LOK 651-05 (which has a 1/2-13 external thread), you would simply drill the hole with a standard 27/64 drill and then tap the hole with a standard 1/2-13 tap. Once that's done, the insert is threaded into the hole like an ordinary fastener using a screwdriver, bolt and jam nut, or an E-Z LOK drive tool. See Below.

EASY REMOVAL:

Use a standard screw and bolt extractor to back out a damaged insert and then replace it with a new insert. Removal is simply a matter of overcoming the resistance to torque-out which has been produced by the thread locking material.



Drill hole with standard drill.

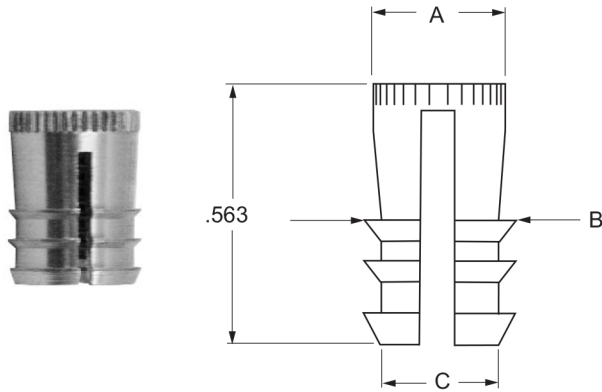


Tap hole with standard tap.



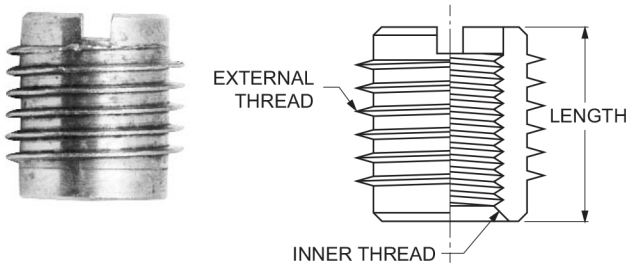
Turn E-Z Lok home flush with bolt.

E-Z LOK THREAD INSERTS™



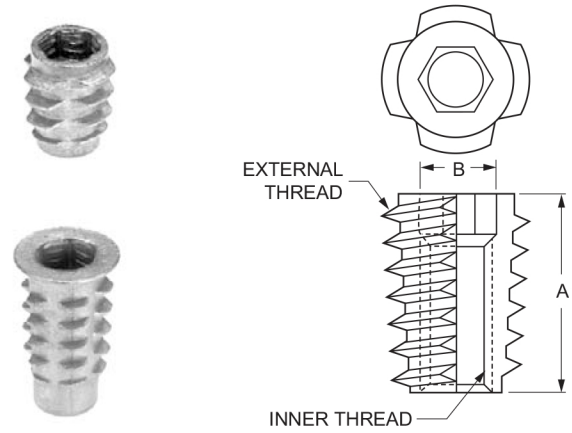
E-Z LOK FINISERS FOR PLASTICS & WOOD					
370 Series - Brass					
P/N	DIMENSIONS				
	THREAD SIZE	A	B	C	STARTING HOLE
652-58	10-32	.347	.368	.318	.344(11/32)
652-59	1/4-20	.409	.431	.381	.406(13/32)
652-60	5/16-18	.471	.493	.443	.443(15/32)

- External knife threads provide superior holding power in hard and soft woods, particle board and all wood products.
- Use wherever field assembly or disassembly could lead to thread erosion or stripping.
- The long pilot assures straight driving into a drilled hole.
- Install with screw driver, bolt and nut, tapping head, or E-Z LOK drive tool.



E-Z LOK KNIFE THREAD INSERTS FOR WOOD					
Carbon Steel					
INSERT P/N	DIMENSIONS				
	INTERNAL THREAD	LENGTH	MAJOR DIAMETER EXTERNAL THREAD	HOLE SIZE	DRIVE TOOL P/N
652-70	4-40	.375	.350	1/4	---
652-71	6-32	.375	.350	1/4	651-80
652-72	8-32	.375	.350	1/4	651-81
652-73	10-24	.500	.453	3/8	651-82
652-74	10-32	.500	.453	3/8	651-83
652-75	1/4-20	.500	.453	3/8	651-84
652-76	5/16-18	.625	.600	1/2	651-85
652-77	3/8-16	.625	.600	1/2	651-86

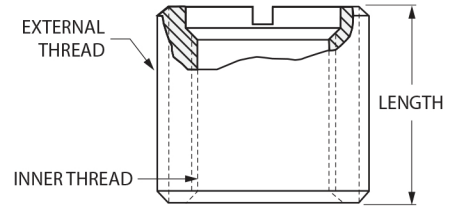
- An inexpensive insert for use in ready-to-assemble furniture, drawer pulls and wherever ease of assembly or avoidance of thread stripping is desired.
- Install with hex drive wrench or E-Z LOK drive tool.



E-Z LOK HEXDRIVE THREAD INSERTS FOR WOOD					
Flanged - Die Cast - Zinc Alloy					
INSERT P/N	DIMENSIONS				
	INTERNAL THREAD	LENGTH	HOLE SIZE	HEX SIZE	DRIVE TOOL P/N
652-80	8-32	10mm	6mm	M4	651-90
652-81	1/4-20	13mm	9mm	M6	651-91
652-82	1/4-20	20mm	9mm	M6	651-92

E-Z LOK HEXDRIVE THREAD INSERTS FOR WOOD					
Flush - Die Cast - Zinc Alloy					
INSERT P/N	DIMENSIONS				
	INTERNAL THREAD	LENGTH	HOLE SIZE	HEX SIZE	DRIVE TOOL P/N
652-83	1/4-20	13mm	9mm	M6	651-93
652-84	1/4-20	20mm	9mm	M6	651-94

E-Z LOK THREAD INSERTS™



METRIC E-Z LOK THREAD INSERT

Metric Internal / U.S. External - Carbon Steel

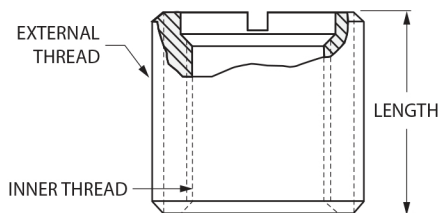
P/N	DIMENSIONS						
	INTERNAL THREAD	EXTERNAL THREAD	LENGTH INCHES	TAP DRILL SIZE	TAP SIZE	MINIMUM FULL THREAD DEPTH	DRIVE TOOL CATALOG NUMBER
651-26	M6 x 1.00	3/8-16	.406	5/16	3/8-16	15/32	651-83
651-27	M8 x 1.25	1/2-13	.484	27/64	1/2-13	9/16	651-84
651-28	M10 x 1.50	9/16-12	.515	31/64	9/16-12	19/32	651-85
651-26	M10 x 1.25	9/16-12	.515	31/64	9/16-12	19/32	651-85
651-30	M12 x 1.75	3/4-10	.656	21/32	3/4-10	3/4	651-86
651-31	M14 x 2.00	7/8-9	.687	49/64	7/8-9	13/16	651-88
651-32	M16 x 2.00	1-8	.781	7/8	1-8	7/8	651-89

METRIC E-Z LOK THREAD INSERT

Metric Internal / Metric External - Carbon Steel

P/N	DIMENSIONS						
	INTERNAL THREAD	EXTERNAL THREAD	LENGTH INCHES	TAP DRILL SIZE	TAP SIZE	MINIMUM FULL THREAD DEPTH	DRIVE TOOL CATALOG NUMBER
651-33	M3 x .50	M6 x 1.00	6.5mm	5.1mm	M6 x 1.00	7.8mm	---
651-34	M4 x .70	M8 x 1.25	7.5mm	6.9mm	M8 x 1.25	9.0mm	651-81
651-35	M5 x .80	M8 x 1.25	7.5mm	6.9mm	M8 x 1.25	9.0mm	651-81
651-36	M6 x 1.00	M10 x 1.50	10.5mm	8.6mm	M10 x 1.50	12.0mm	651-83
651-37	M8 x 1.25	M12 x 1.75	12.5mm	10.4mm	M12 x 1.75	14.5mm	651-84
651-38	M10 x 1.50	M16 x 2.00	17.0mm	14.0mm	M16 x 2.00	19.0mm	651-85
651-39	M12 x 1.75	M16 x 2.00	17.0mm	14.0mm	M16 x 2.00	19.0mm	651-86
651-40	M16 x 2.00	M24 x 3.00	20.0mm	21.0mm	M24 x 3.00	24.0mm	651-88

E-Z LOK THREAD INSERTS™



STAINLESS STEEL E-Z LOK THREAD INSERT

Course Thread Sizes - 303 Stainless Steel - Passivated

P/N	DIMENSIONS						
	INTERNAL THREAD	EXTERNAL THREAD	LENGTH INCHES	TAP DRILL SIZE	TAP SIZE	MINIMUM FULL THREAD DEPTH	DRIVE TOOL CATALOG NUMBER
651-41	4-40	10-32	.250	5/32	10-32	9/32	---
651-42	6-32	1/4-20	.280	7	1/4-20	11/32	---
651-43	8-32	5/16-18	.290	F	5/16-18	7/16	651-81
651-44	10-24	3/8-16	.406	5/16	3/8-16	15/32	651-82
651-45	1/4-20	7/16-14	.437	23/64	7/16-14	1/2	651-83
651-46	5/16-18	1/2-13	.484	27/64	1/2-13	9/16	651-84
651-47	3/8-16	9/16-12	.515	31/64	9/16-12	19/32	651-85
651-48	7/16-14	5/8-11	.656	17/32	5/8-11	23/32	651-86
651-49	1/2-13	3/4-10	.656	21/32	3/4-10	3/4	651-87
651-50	5/8-11	7/8-9	.687	49/64	7/8-9	13/16	651-88
651-51	3/4-10	1-8	.781	7/8	1-8	7/8	651-89

STAINLESS STEEL E-Z LOK THREAD INSERT

Fine Thread Sizes - 303 Stainless Steel - Passivated

P/N	DIMENSIONS						
	INTERNAL THREAD	EXTERNAL THREAD	LENGTH INCHES	TAP DRILL SIZE	TAP SIZE	MINIMUM FULL THREAD DEPTH	DRIVE TOOL CATALOG NUMBER
651-52	10-32	3/8-16	.406	5/16	3/8-16	15/32	651-82
651-53	1/4-28	7/16-14	.437	23/64	7/16-14	1/2	651-83
651-54	5/16-24	1/2-13	.484	27/64	1/2-13	9/16	651-84
651-55	3/8-24	9/16-12	.515	31/64	9/16-12	19/32	651-85
651-56	7/16-20	5/8-11	.656	17/32	5/8-11	23/32	651-86
651-57	1/2-20	3/4-10	.656	21/32	3/4-10	3/4	651-87

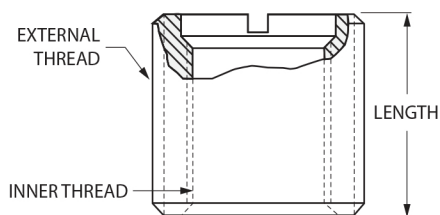
E-Z LOK THREAD INSERTS™

EXTRA HEAVY WALL E-Z LOK THREAD INSERT

Course Thread Sizes - Carbon Steel

P/N	DIMENSIONS						
	INTERNAL THREAD	EXTERNAL THREAD	LENGTH INCHES	TAP DRILL SIZE	TAP SIZE	MINIMUM FULL THREAD DEPTH	DRIVE TOOL CATALOG NUMBER
651-58	1/4-20	1/2-13	.484	27/64	1/2-13	9/16	651-83
651-59	5/16-18	9/16-12	.515	31/64	9/16-12	19/32	651-84
651-60	3/8-16	5/8-11	.656	17/32	5/8-11	23/32	651-85
651-61	1/2-13	7/8-9	.687	49/64	7/8-9	13/16	---
651-62	5/8-11	1-8	.781	7/8	1-8	7/8	---

E-Z LOK THREAD INSERTS™



E-Z LOK THREAD INSERT

Course Thread Sizes - Carbon Steel

P/N	DIMENSIONS						
	INTERNAL THREAD	EXTERNAL THREAD	LENGTH INCHES	TAP DRILL SIZE	TAP SIZE	MINIMUM FULL THREAD DEPTH	DRIVE TOOL CATALOG NUMBER
651-00	4-40	10-32	.250	5/32	10-32	9/32	---
651-01	6-32	1/4-20	.280	7	1/4-20	11/32	---
651-02	8-32	5/16-18	.290	F	5/16-18	7/16	651-81
651-03	10-24	3/8-16	.406	5/16	3/8-16	15/32	651-82
651-04	1/4-20	7/16-14	.437	23/64	7/16-14	1/2	651-83
651-05	5/16-18	1/2-13	.484	27/64	1/2-13	9/16	651-84
651-06	3/8-16	9/16-12	.515	31/64	9/16-12	19/32	651-85
651-07	7/16-14	5/8-11	.656	17/32	5/8-11	23/32	651-86
651-08	1/2-13	3/4-10	.656	21/32	3/4-10	3/4	651-87
651-09	9/16-12	3/4-10	.656	21/32	3/4-10	3/4	651-87
651-10	5/8-11	7/8-9	.687	49/64	7/8-9	13/16	651-88
651-11	5/8-11	7/8-9	1.125	49/64	7/8-9	1-1/4	651-88
651-12	3/4-10	1-8	.781	7/8	1-8	7/8	651-89
651-13	7/8-9	1-1/4-7	1.125	1-7/64	1-1/4-7	1-1/4	---
651-14	8-1	1-3/8-12	1.250	1-9/32	1-3/8-12	1-3/8	---

E-Z LOK THREAD INSERT

Fine Thread Sizes - Carbon Steel

P/N	DIMENSIONS						
	INTERNAL THREAD	EXTERNAL THREAD	LENGTH INCHES	TAP DRILL SIZE	TAP SIZE	MINIMUM FULL THREAD DEPTH	DRIVE TOOL CATALOG NUMBER
651-15	10-32	3/8-16	.406	5/16	3/8-16	15/32	651-82
651-16	1/4-28	7/16-14	.437	23/64	7/16-14	1/2	651-83
651-17	5/16-24	1/2-13	.484	27/64	1/2-13	9/16	651-84
651-18	3/8-24	9/16-12	.515	31/64	9/16-12	19/32	651-85
651-19	7/16-20	5/8-11	.656	17/32	5/8-11	23/32	651-86
651-20	1/2-20	3/4-10	.656	21/32	3/4-10	3/4	651-87
651-21	9/16-18	3/4-10	.656	21/32	3/4-10	3/4	651-87
651-22	5/8-18	7/8-9	.687	49/64	7/8-9	13/16	651-88
651-23	3/4-16	1-8	.781	7/8	1-8	7/8	651-89
651-24	7/8-14	1-1/4-7	1.125	1-7/64	1-1/4-7	1-1/4	---
651-25	1-14	1-3/8-12	1.125	1-9/32	1-3/8-12	1-3/8	---