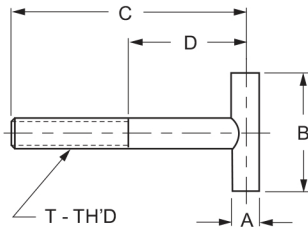


DRIVER STUDS

- T-Straps are used to hold down parts. Ideal for strapping down heavy equipment.
- Used as a hinge in tight-down setup, or simply as clamp down T-Bolt.

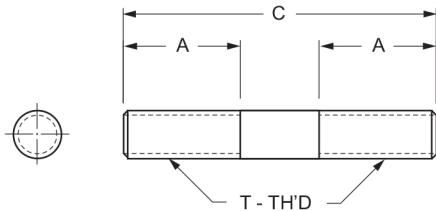


T-STRAP BOLTS

Medium Carbon Steel - Case Hardened to Grade 5 - Zinc Plate Steel

P/N	DIMENSIONS				
	A	B	C	D	T
337-35	1/4	1	2	1/2	1/4-20
337-36	1/4	1	2	1/2	1/4-28
337-37	5/16	1-1/2	2-1/2	1/2	5/16-18
337-38	5/16	1-1/2	2-1/2	1/2	5/16-24
337-39	3/8	2	3-1/2	1-1/2	3/8-16
337-40	3/8	2	3-1/2	1-1/2	3/8-24
337-41	1/2	2	3-1/2	1	1/2-13
337-42	1/2	2	3-1/2	1	1/2-20
337-43	1/2	2	6-1/2	1	1/2-13
337-44	1/2	2	6-1/2	1	1/2-20

- There are no wrench flats on these metric studs.
- Special size and large quantities quoted on request.



METRIC STUDS

Medium Carbon Steel - Case Hardened to Grade 5 - Black Oxide Finish

P/N	DIMENSIONS		
	A	C	T
340-00	20	50	M6 x 1.00
340-02	20	65	M6 x 1.00
340-04	27	80	M6 x 1.00
340-06	27	95	M6 x 1.00

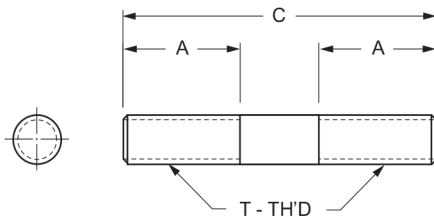
METRIC STUDS - CONTINUED

Medium Carbon Steel - Case Hardened to Grade 5 - Black Oxide Finish

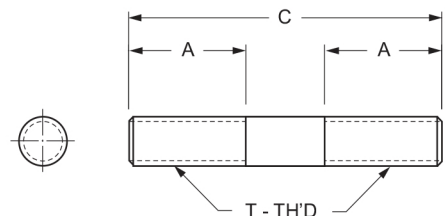
P/N	DIMENSIONS		
	A	C	T
340-08	31	110	M6 x 1.00
340-10	20	50	M8 x 1.25
340-12	20	65	M8 x 1.25
340-14	27	80	M8 x 1.25
340-16	31	95	M8 x 1.25
340-18	31	110	M8 x 1.25
340-20	35	140	M8 x 1.25
340-22	20	50	M10 x 1.50
340-24	20	65	M10 x 1.50
340-26	27	80	M10 x 1.50
340-28	31	95	M10 x 1.50
340-30	35	110	M10 x 1.50
340-32	35	125	M10 x 1.50
340-34	35	140	M10 x 1.50
340-36	35	150	M10 x 1.50
340-38	35	175	M10 x 1.50
340-39	35	200	M10 x 1.50
340-40	20	50	M12 x 1.75
340-42	20	65	M12 x 1.75
340-44	27	80	M12 x 1.75
340-46	31	95	M12 x 1.75
340-48	39	110	M12 x 1.75
340-50	39	125	M12 x 1.75
340-52	39	140	M12 x 1.75
340-54	39	150	M12 x 1.75
340-56	39	175	M12 x 1.75
340-58	39	200	M12 x 1.75
340-60	21	80	M16 x 2.00
340-62	31	95	M16 x 2.00
340-64	47	110	M16 x 2.00
340-65	47	125	M16 x 2.00
340-66	47	150	M16 x 2.00
340-68	47	175	M16 x 2.00
340-70	47	200	M16 x 2.00
340-72	47	250	M16 x 2.00
340-74	47	300	M16 x 2.00
340-76	27	80	M20 x 2.50
340-78	31	95	M20 x 2.50
340-80	47	110	M20 x 2.50
340-82	55	125	M20 x 2.50

DRIVER STUDS

METRIC STUDS - CONTINUED			
Medium Carbon Steel - Case Hardened to Grade 5 - Black Oxide Finish			
P/N	DIMENSIONS		
	A	C	T
340-84	55	175	M20 x 2.50
340-86	55	200	M20 x 2.50
340-88	55	250	M20 x 2.50
340-90	55	300	M20 x 2.50
340-92	39	100	M24 x 3.00
340-93	55	125	M24 x 3.00
340-94	63	150	M24 x 3.00
340-95	63	175	M24 x 3.00
340-96	63	200	M24 x 3.00
340-97	63	250	M24 x 3.00
340-98	63	300	M24 x 3.00



STAINLESS STEEL DRIVER STUDS - CONTINUED			
303 Stainless Steel - No Flats - Rolled Threads			
P/N	DIMENSIONS		
	A	C	T
343-15	5/8-11	5	1.75
343-16	5/8-11	6	1.75
343-17	5/8-11	8	1.75
343-18	3/4-10	3	1.75
343-19	3/4-10	4	1.25
343-20	3/4-10	6	2.00
343-21	3/4-10	8	2.00
343-22	3/4-10	10	2.00



STAINLESS STEEL DRIVER STUDS			
303 Stainless Steel - No Flats - Rolled Threads			
P/N	DIMENSIONS		
	A	C	T
343-00	1.00	3	1/4-20
343-01	1.00	4	1/4-20
343-02	1.00	5	1/4-20
343-03	1.00	3	5/16-18
343-04	1.13	4	5/16-18
343-05	1.13	3	3/8-16
343-06	1.25	4	3/8-16
343-07	1.25	5	3/8-16
343-08	1.25	6	3/8-16
343-09	1.25	8	3/8-16
343-10	1.50	4	1/2-13
343-11	1.50	5	1/2-13
343-12	1.50	6	1/2-13
343-13	1.50	8	1/2-13
343-14	1.75	4	1/2-13

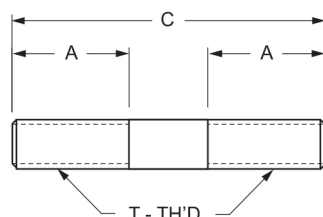
DRIVER STUDS				
Tensile Strength 125,000 PSI - Yield 100,000 PSI - Black Oxide Finish				
P/N	DIMENSIONS			
	A	C	T	FLATS
345-00	1/2	1-1/2	1/4-20	NO
345-01	3/4	2	1/4-20	NO
345-02	1	2-1/2	1/4-20	NO
345-03	1	3	1/4-20	NO
345-04	1	3-1/2	1/4-20	NO
345-05	1	4	1/4-20	NO
345-06	1	4-1/2	1/4-20	NO
345-07	1	5	1/4-20	NO
345-08	1	5-1/2	1/4-20	NO
345-09	1	6	1/4-20	NO
345-10	1	6-1/2	1/4-20	NO
345-11	1	7	1/4-20	NO
345-12	1	7-1/2	1/4-20	NO
345-13	1	8	1/4-20	NO
345-14	1/2	1-1/2	5/16-18	NO
345-15	3/4	2	5/16-18	NO
345-16	1	2-1/2	5/16-18	NO
345-17	1-1/8	3	5/16-18	NO

DRIVER STUDS

DRIVER STUDS - CONTINUED				
Tensile Strength 125,000 PSI - Yield 100,000 PSI - Black Oxide Finish				
P/N	DIMENSIONS			
	A	C	T	FLATS
345-18	1-1/8	3-1/2	5/16-18	NO
345-19	1-1/8	4	5/16-18	NO
345-20	1-1/8	4-1/2	5/16-18	NO
345-21	1-1/8	5	5/16-18	NO
345-22	1-1/8	5-1/2	5/16-18	NO
345-23	1-1/8	6	5/16-18	NO
345-24	1-1/8	6-1/2	5/16-18	NO
345-25	1-1/8	7	5/16-18	NO
345-26	1-1/8	7-1/2	5/16-18	NO
345-27	1-1/8	8	5/16-18	NO
345-28	1/2	1-1/2	3/8-16	NO
345-29	3/4	2	3/8-16	NO
345-30	1	2-1/2	3/8-16	NO
345-31	1	3	3/8-16	YES
345-32	1-1/4	3-1/2	3/8-16	YES
345-33	1-1/4	4	3/8-16	YES
345-34	1-1/4	4-1/2	3/8-16	YES
345-35	1-1/4	5	3/8-16	YES
345-36	1-1/4	5-1/2	3/8-16	YES
345-37	1-1/4	6	3/8-16	YES
345-38	1-1/4	6-1/2	3/8-16	YES
345-39	1-1/4	7	3/8-16	YES
345-40	1-1/4	7-1/2	3/8-16	YES
345-41	1-1/4	8	3/8-16	YES
345-42	1/2	1-1/2	7/16-14	NO
345-43	3/4	2	7/16-14	NO
345-44	1	2-1/2	7/16-14	NO
345-45	1	3	7/16-14	YES
345-46	1-1/4	3-1/2	7/16-14	YES
345-47	1-3/8	4	7/16-14	YES
345-48	1-3/8	4-1/2	7/16-14	YES
345-49	1-3/8	5	7/16-14	YES
345-50	1-3/8	5-1/2	7/16-14	YES
345-51	1-3/8	6	7/16-14	YES
345-52	1-3/8	6-1/2	7/16-14	YES
345-53	1-3/8	7	7/16-14	YES
345-54	1-3/8	7-1/2	7/16-14	YES
345-55	1-3/8	8	7/16-14	YES
345-56	1/2	1-1/2	1/2-13	NO
345-57	3/4	2	1/2-13	NO

DRIVER STUDS - CONTINUED				
Tensile Strength 125,000 PSI - Yield 100,000 PSI - Black Oxide Finish				
P/N	DIMENSIONS			
	A	C	T	FLATS
345-58	1	2-1/2	1/2-13	NO
345-59	1	3	1/2-13	YES
345-60	1-1/4	3-1/2	1/2-13	YES
345-61	1-1/2	4	1/2-13	YES
345-62	1-1/2	4-1/2	1/2-13	YES
345-63	1-1/2	5	1/2-13	YES
345-64	1-1/2	5-1/2	1/2-13	YES
345-65	1-1/2	6	1/2-13	YES
345-66	1-1/2	6-1/2	1/2-13	YES
345-67	1-1/2	7	1/2-13	YES
345-68	1-1/2	7-1/2	1/2-13	YES
345-69	1-1/2	8	1/2-13	YES
345-70	1-1/2	9	1/2-13	YES
345-71	1-1/2	10	1/2-13	YES
345-72	1-1/2	12	1/2-13	YES
345-73	1-1/2	14	1/2-13	YES
345-74	1-1/2	16	1/2-13	YES
345-79	1/2	1-1/2	5/8-11	NO
345-80	3/4	2	5/8-11	NO
345-81	1	2-1/2	5/8-11	NO
345-82	1	3	5/8-11	YES
345-83	1-1/4	3-1/2	5/8-11	YES
345-84	1-1/2	4	5/8-11	YES
345-85	1-3/4	4-1/2	5/8-11	YES
345-86	1-3/4	5	5/8-11	YES
345-87	1-3/4	5-1/2	5/8-11	YES
345-88	1-3/4	6	5/8-11	YES
345-89	1-3/4	6-1/2	5/8-11	YES
345-90	1-3/4	7	5/8-11	YES
345-91	1-3/4	7-1/2	5/8-11	YES
345-92	1-3/4	8	5/8-11	YES
345-93	1-3/4	9	5/8-11	YES
345-94	1-3/4	10	5/8-11	YES
345-95	1-3/4	12	5/8-11	YES
345-96	1-3/4	14	5/8-11	YES
345-97	1-3/4	16	5/8-11	YES
345-98	1-3/4	18	5/8-11	YES
345-99	1-3/4	20	5/8-11	YES
346-00	1-3/4	22	5/8-11	YES
346-01	1-3/4	24	5/8-11	YES

DRIVER STUDS



DRIVER STUDS - CONTINUED

Tensile Strength 125,000 PSI - Yield 100,000 PSI - Black Oxide Finish

P/N	DIMENSIONS			
	A	C	T	FLATS
346-02	1	3	3/4-10	YES
346-03	1-1/4	3-1/2	3/4-10	YES
346-04	1-1/2	4	3/4-10	YES
346-05	1-3/4	4-1/2	3/4-10	YES
346-06	2	5	3/4-10	YES
346-07	2	5-1/2	3/4-10	YES
346-08	2	6	3/4-10	YES
346-09	2	6-1/2	3/4-10	YES
346-10	2	7	3/4-10	YES
346-11	2	7-1/2	3/4-10	YES
346-12	2	8	3/4-10	YES
346-13	2	9	3/4-10	YES
346-14	2	10	3/4-10	YES
346-15	2	12	3/4-10	YES
346-16	2	14	3/4-10	YES
346-17	2	16	3/4-10	YES
346-18	2	18	3/4-10	YES
346-19	2	20	3/4-10	YES
346-20	2	22	3/4-10	YES
346-21	2	24	3/4-10	YES
346-22	1	3	7/8-9	YES
346-23	1-1/4	3-1/2	7/8-9	YES
346-24	1-1/2	4	7/8-9	YES
346-25	1-3/4	4-1/2	7/8-9	YES
346-26	2	5	7/8-9	YES
346-27	2-1/4	5-1/2	7/8-9	YES
346-28	2-1/4	6	7/8-9	YES
346-29	2-1/4	6-1/2	7/8-9	YES
346-30	2-1/4	7	7/8-9	YES
346-31	2-1/4	7-1/2	7/8-9	YES
346-32	2-1/4	8	7/8-9	YES
346-33	2-1/4	9	7/8-9	YES
346-34	2-1/4	10	7/8-9	YES
346-35	2-1/4	12	7/8-9	YES

DRIVER STUDS - CONTINUED

Tensile Strength 125,000 PSI - Yield 100,000 PSI - Black Oxide Finish

P/N	DIMENSIONS			
	A	C	T	FLATS
346-36	2-1/4	14	7/8-9	YES
346-37	2-1/4	16	7/8-9	YES
346-38	2-1/4	18	7/8-9	YES
346-39	2-1/4	20	7/8-9	YES
346-40	2-1/4	22	7/8-9	YES
346-41	2-1/4	24	7/8-9	YES
346-42	1	3	1-8	YES
346-43	1-1/4	3-1/2	1-8	YES
346-44	1-1/2	4	1-8	YES
346-45	1-3/4	4-1/2	1-8	YES
346-46	2	5	1-8	YES
346-47	2-1/4	5-1/2	1-8	YES
346-48	2-1/2	6	1-8	YES
346-49	2-1/2	6-1/2	1-8	YES
346-50	2-1/2	7	1-8	YES
346-51	2-1/2	7-1/2	1-8	YES
346-52	2-1/2	8	1-8	YES
346-53	2-1/2	9	1-8	YES
346-54	2-1/2	10	1-8	YES
346-55	2-1/2	12	1-8	YES
346-56	2-1/2	14	1-8	YES
346-57	2-1/2	16	1-8	YES
346-58	2-1/2	18	1-8	YES
346-59	2-1/2	20	1-8	YES
346-60	2-1/2	22	1-8	YES
346-61	2-1/2	24	1-8	YES