

DIAMOND GROOVE - TYPE DG & DGM

When ordering specify:

Example:

Quantity	Bushing Type	I.D.(A)	O.D.(B)	Length(C)
6	DG	5/16	5/8	3/4

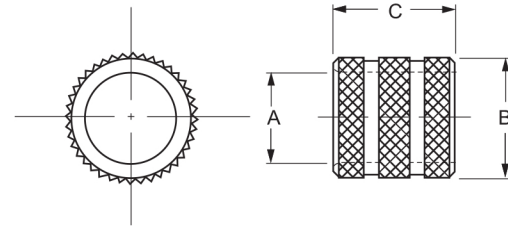
Or: 6 DG-40-12

When ordering specify:

Example:

Quantity	Bushing Type	I.D.(A)	O.D.(B)	Length(C)
6	DGM	6	10	16

Or: 6 DGM-10-16



DIAMOND GROOVE - TYPE DG				
Standard - All grooves are 1/8th inch wide.				
A I.D. RANGE DRILL SIZE DIGITAL RANGE	B O.D. TOLERANCE NOMINAL ACTUAL	C	ANSI SYMBOL	PRICE CODE
#55-#39 (.0520 - .0995) 1.35 - 2.50mm	13/64 .223 .213	1/4	DG-13-4	118
		5/16	DG-13-5	121
		3/8	DG-13-6	124
		1/2	DG-13-8	125
#40 9/64 (.0980 - .1406) 2.50 - 3.50mm	1/4 .275 .260	1/4	DG-16-4	107
		5/16	DG-16-5	108
		3/8	DG-16-6	110
		1/2	DG-16-8	112
		*3/4	DG-16-12	119
1/8 - #10 (.1250 - .1935) 3.20 - 4.90mm	5/16 .337 .322	1/4	DG-20-4	101
		5/16	DG-20-5	103
		3/8	DG-20-6	104
		1/2	DG-20-8	105
		3/4	DG-20-12	110
		*1	DG-20-16	115
5/32 - F (.1562 - .2570) 4.00 - 6.50mm	13/32 .431 .416	1/4	DG-26-4	101
		5/16	DG-26-5	101
		3/8	DG-26-6	102
		1/2	DG-26-8	103
		3/4	DG-26-12	105
5/32 - 0 (.1562 - .3160) 4.00 - 8.00mm	1/2 .525 .510	5/16	DG-32-5	101
		3/8	DG-32-6	102
		1/2	DG-32-8	103
		3/4	DG-32-12	105
		*1	DG-32-16	110
5/16 - 7/16 (.3125 - .4375) 7.90 - 11.00mm	5/8 .650 .630	3/8	DG-40-6	101
		1/2	DG-40-8	101
		3/4	DG-10-12	103
		1	DG-40-16	104
		1-3/8	DG-40-22	110
5/16 - 17/32 (.3125 - .5312) 8.00 - 13.00mm	3/4 .775 .760	3/8	DG-48-6	101
		1/2	DG-48-8	101
		3/4	DG-48-12	103
		1	DG-48-16	104
		1-3/8	DG-48-16	114
1/2 - 21/32 (.5000 - .6562) 13.00 - 16.50mm	7/8 .900 .885	3/8	DG-56-6	113
		1/2	DG-56-8	109
		3/4	DG-56-12	110
		1	DG-56-16	112
		1-3/8	DG-56-22	114
1/2-49/64 (.5000 - .7656) 13.00 - 19.00mm	1 1.035 1.010	1/2	DG-64-8	110
		3/4	DG-64-12	110
		1	DG-64-12	113
		1-3/8	DG-64-22	115
		1-1/2	DG-64-26	119

METRIC DIAMOND GROOVE - TYPE DGM				
Lengths below 10mm will be full Knurl.				
A I.D. RANGE NOMINAL	B O.D. TOLERANCE NOMINAL ACTUAL	C	ANSI SYMBOL	PRICE CODE
1.00 1.80	5 5.50 - 5.25	6	DGM - 5-6	192
		9	DGM - 5-9	207
1.81 2.60	5 5.50 - 5.25	6	DGM - 5-6	126
		9	DGM - 5-9	131
2.61 3.30	6 6.65 6.25	8	DGM - 6-8	114
		12	DGM - 6-12	115
		16	DGM - 6-16	127
3.31 4.00	7 7.65 7.25	8	DGM - 7-8	110
		12	DGM - 7-12	111
		16	DGM - 7-16	114
4.01 5.00	8 8.65 8.25	8	DGM - 8-8	105
		12	DGM - 8-12	107
		16	DGM - 8-16	111
5.01 6.00	10 10.65 10.25	10	DGM - 10-10	107
		16	DGM - 10-16	111
		20	DGM - 10-20	114
6.01 8.00	12 12.65 12.25	10	DGM - 12-10	107
		16	DGM - 12-12	111
		20	DGM - 12-20	114
8.01 10.00	15 15.65 15.25	12	DGM - 15-12	102
		20	DGM - 15-20	107
		25	DGM - 15-25	110
10.01 12.00	18 18.65 18.25	12	DGM - 18-12	104
		20	DGM - 18-20	107
		25	DGM - 18-25	111
12.01 15.00	22 22.65 22.25	16	DGM - 22-16	114
		28	DGM - 22-28	115
		36	DGM - 22-36	120
15.01 18.00	26 26.90 26.25	16	DGM - 26-16	114
		28	DGM - 26-28	122
		36	DGM - 26-36	127

* Counterbored leaving correct drill bearing length and chip clearance.